

ESTABLISHING A SET OF SPACES

# Honey Production

Smoking



Frame Loosening



Frame Removal



Cap Removal



Spinning



Sieving



Pasteurising



Ultrafiltering/  
Ultrasonicing



**Comb honey**  
cut out of frame  
labour intensive



**Chunk honey**  
comb in liquid honey



**Raw honey**  
contains pollen and wax  
may relieve hayfever



**Organic honey**  
organic, certified and for a 4 mile radius  
no antibiotic controls of bee diseases



**Strained honey**  
passed through mesh  
wax and propolis removed



**Whipped honey**  
small crystals formed at 14°C  
smooth, spreadable texture



**Crystallized honey**  
high fructose content  
spontaneous crystallization  
granular texture



**Dried honey**  
all moisture extracted  
drying and anti-binding agents may be added



**Ultrafiltered honey**  
eliminates enzymes  
yeast cells  
wax  
pollen  
prolongs shelf life  
can reduce quality

Jar Sterilizing



Bottling



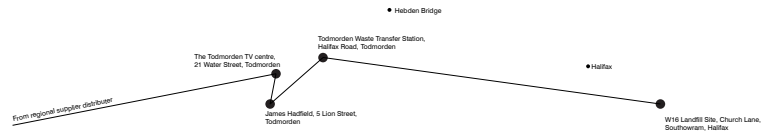
Labelling



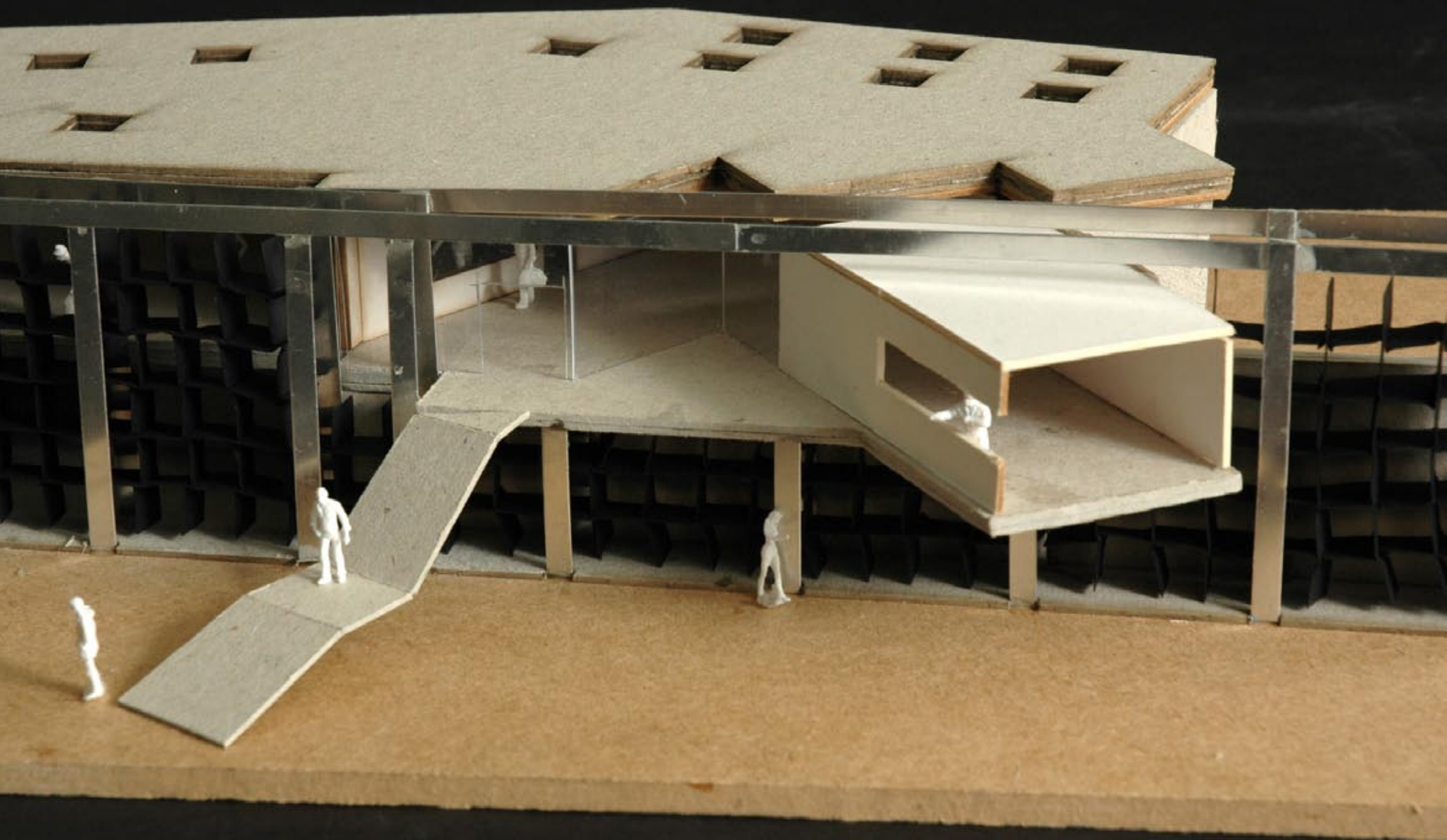


## Plasma Television Process

Size proportional to time









**Row 1**  
0:00 Enter kitchen  
0:04 Grasp Kettle  
0:06 Lift Kettle - Tense arm, weight on left leg  
0:08 Rotate 180°  
0:10 Two steps toward sink  
0:12 Right hand fingers grasp kettle lid and pull up toward body  
0:16 Tip kettle and pour old water into sink  
0:21 Weight Centred - tilt at hips  
Right hand moves to tap and thumb rotates tap on as kettle is placed below tap to collect flowing water  
0:26 Kettle fills - Left arm adjusts to new weight.

**Row 2**  
0:27 Right hand thumb adjusts to turn off tap  
0:28 Right hand fingers close lid of kettle  
0:29 Rotate 180° and take two steps back to kettle charger  
0:31 Left arm places kettle on charger  
0:32 Release grip  
0:33 Outside of left index finger flicks switch to begin boiling process  
0:35 Rotate 270° and take three steps toward cupboard

**Row 3**  
0:38 Left arm reaches up to handle and finger and thumb squeeze metal  
0:39 Tripod engages to open cupboard door  
0:41 Release handle and reach inside cupboard  
0:42 Moves unwanted cup off favourite cup  
0:45 Fingers grip handle and thumb balances cups weight as cup is lifted from cupboard  
0:48 Rotate 180° and take three steps back toward bench

**Row 4**

0:51 Lower cup to bench and place near edge and release  
0:53 Rotate 100° anti-clockwise and take four steps toward chair at head of table  
0:57 Place left hand at corner of table to support weight and lower body down onto chair  
1:02 Left arm reaches for magazine on table to read whilst water boils

**Row 5**

1:03 Fingers hold pages and pull magazine over to be read  
1:05 Begin to read magazine as water is boiling  
2:56 Ears can hear water is nearly at boiling point  
3:00 Legs push up to lift body from chair and rotate 90° clockwise  
3:03 6 Steps toward cupboard with Earl - Grey tea bags inside

**Row 6**

3:14 Left arm reaches up to cupboard and finger and thumb clasp metal handle  
3:16 Arm pulls cupboard door open and fingers release grip just before door is fully opened, allowing its momentum to take it the rest of the way  
3:19 Fingers praise open lid of box containing tea bags and reach inside for teabag  
3:23 Fingers perform complex motion to tear two adjacent teabags before closing lid of box  
3:28 Teabag is held between finger and thumb as left hand pushes cupboard door shut  
3:29 Rotate 270° clockwise and take two steps toward bench with cup and kettle  
3:33 Reach out and grasp kettle

**Row 7**

3:35 Scoop engages to lift kettle  
3:37 Wrist rotates kettle to pour boiled water into cup  
3:41 Wrist rotates kettle back to verticle axis and hand displaces kettle back onto its base unit  
3:44 Rotate 90° anti-clockwise and take one step toward fridge  
3:46 Left arm reaches out and fingers wrap around handle before pulling sharply toward body to open door  
3:48 Fingers release, bend knees and back as arm reaches down to grasp milk from inside fridge  
3:49 Lift milk from fridge using two fingers and thumb on lid for balance  
3:51 Right leg extends with toes pointed to push door shut  
3:52 Rotate 70° and take one step back toward cup

**Row 8**

3:56 Left hand fingers grasp lid and rotate anti-clockwise to remove lid  
3:57 Left hand grasps milk carton and wrist rotates to pour milk into cup  
4:01 Milk placed back on bench with left hand fingers  
4:02 Lid picked up and placed on carton then rotated clockwise to secure  
4:04 Lift carton again and rotate 90° anti-clockwise and take one step toward fridge  
4:07 Fingers straighten to get a hold of fridge handle and pull sharply outwards  
4:08 Door swings too fast so right leg reacts to stop door with toe

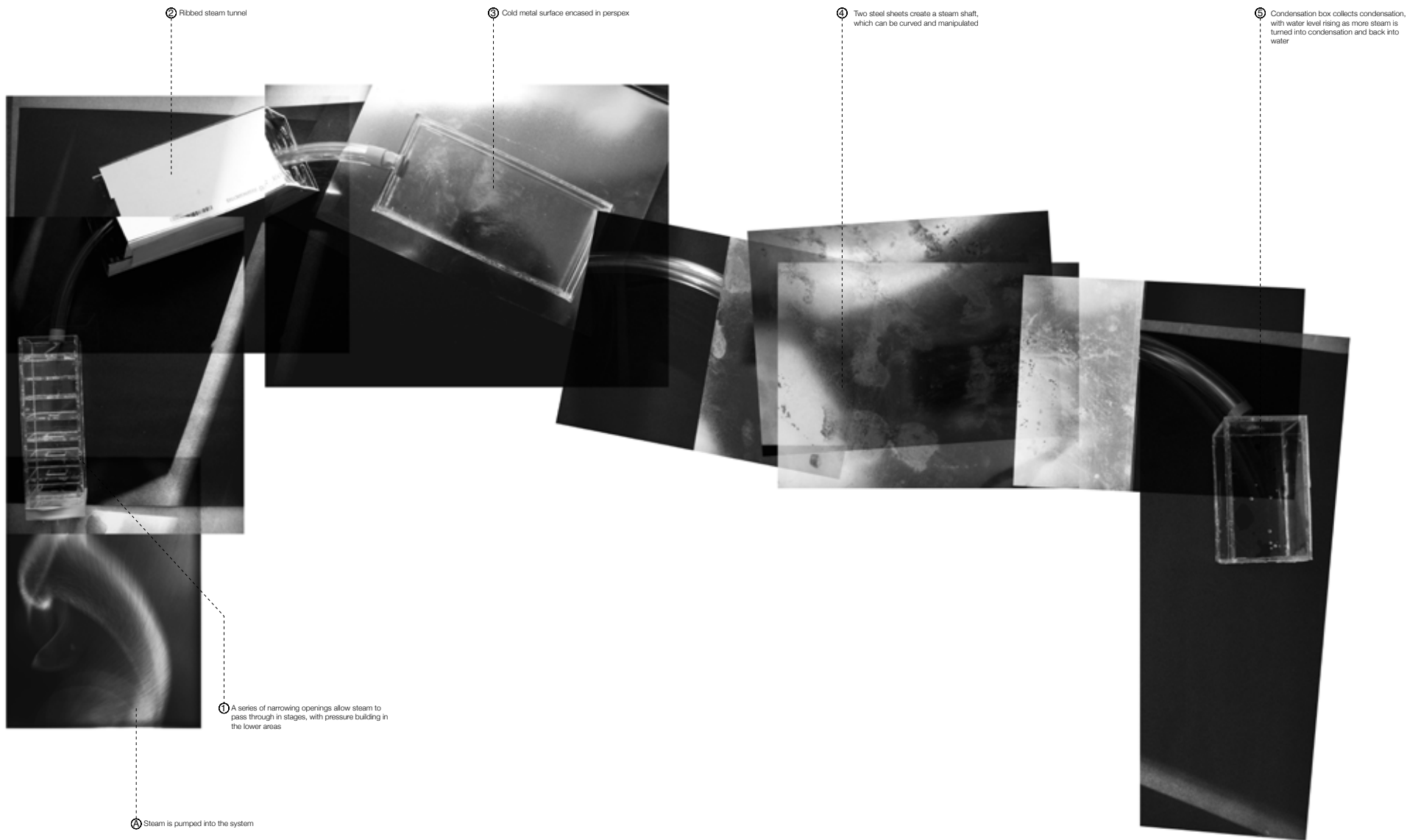
**Row 9**

4:09 Milk is placed back in fridge  
4:10 Look inside drawer  
4:15 Reach in and lift out spoon using thumb and forefinger  
4:17 Pick spoon using its own weight so that it rotates to face the correct direction  
4:19 Push draw shut with wrist  
4:21 Bring spoon down into cup and stir in a clockwise motion  
4:28 Squeeze teabag against inside of cup and lift out  
4:32 Bend at waist and reach over to drop teabag into bin

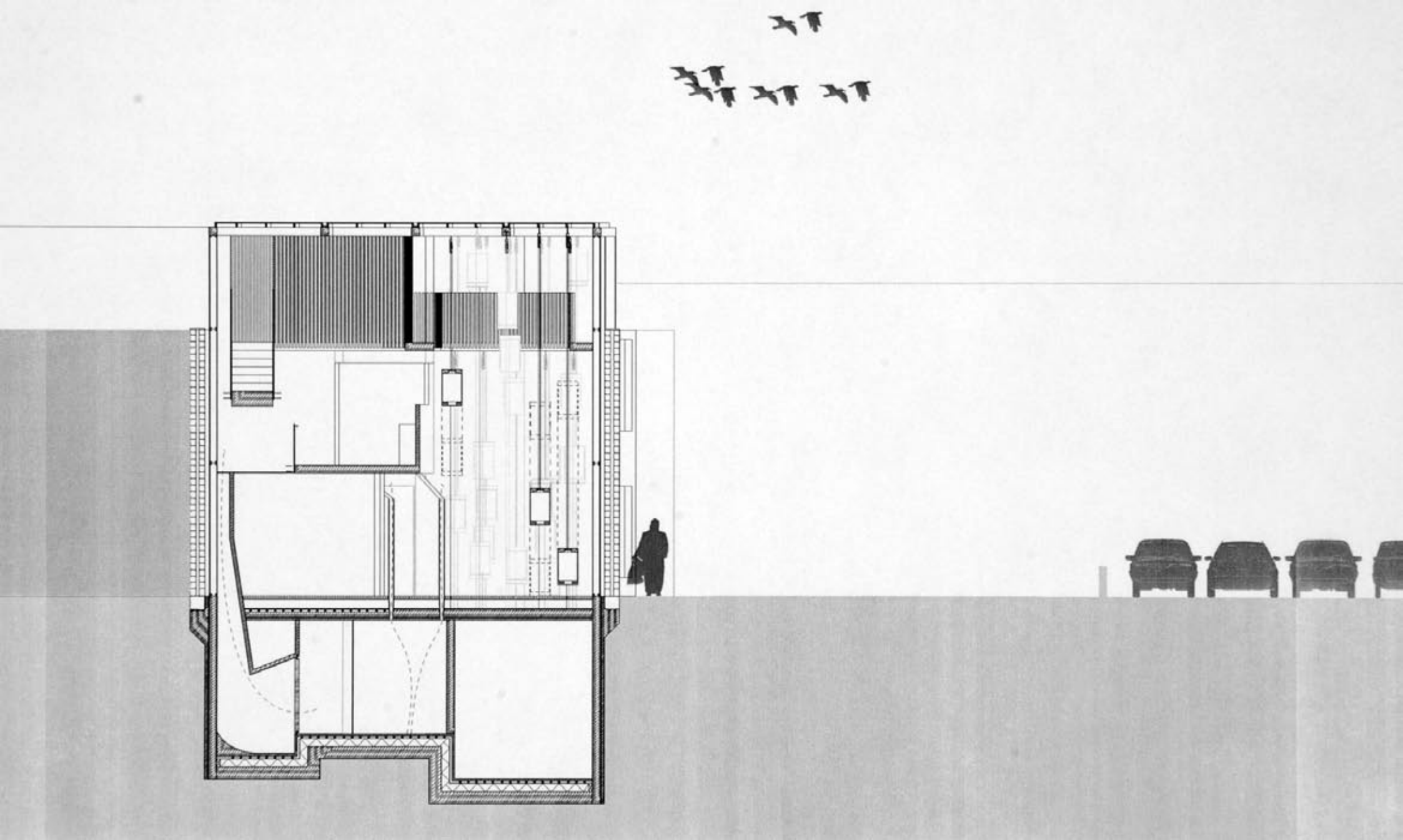
**Row 10**

4:35 Place spoon back on bench to be cleaned later  
4:37 Lift cup using thumb and first two fingers, with other fingers providing balance  
4:28 Rotate 90° anti-clockwise and take three steps toward table  
4:32 Place cup down and take seat to read magazine.





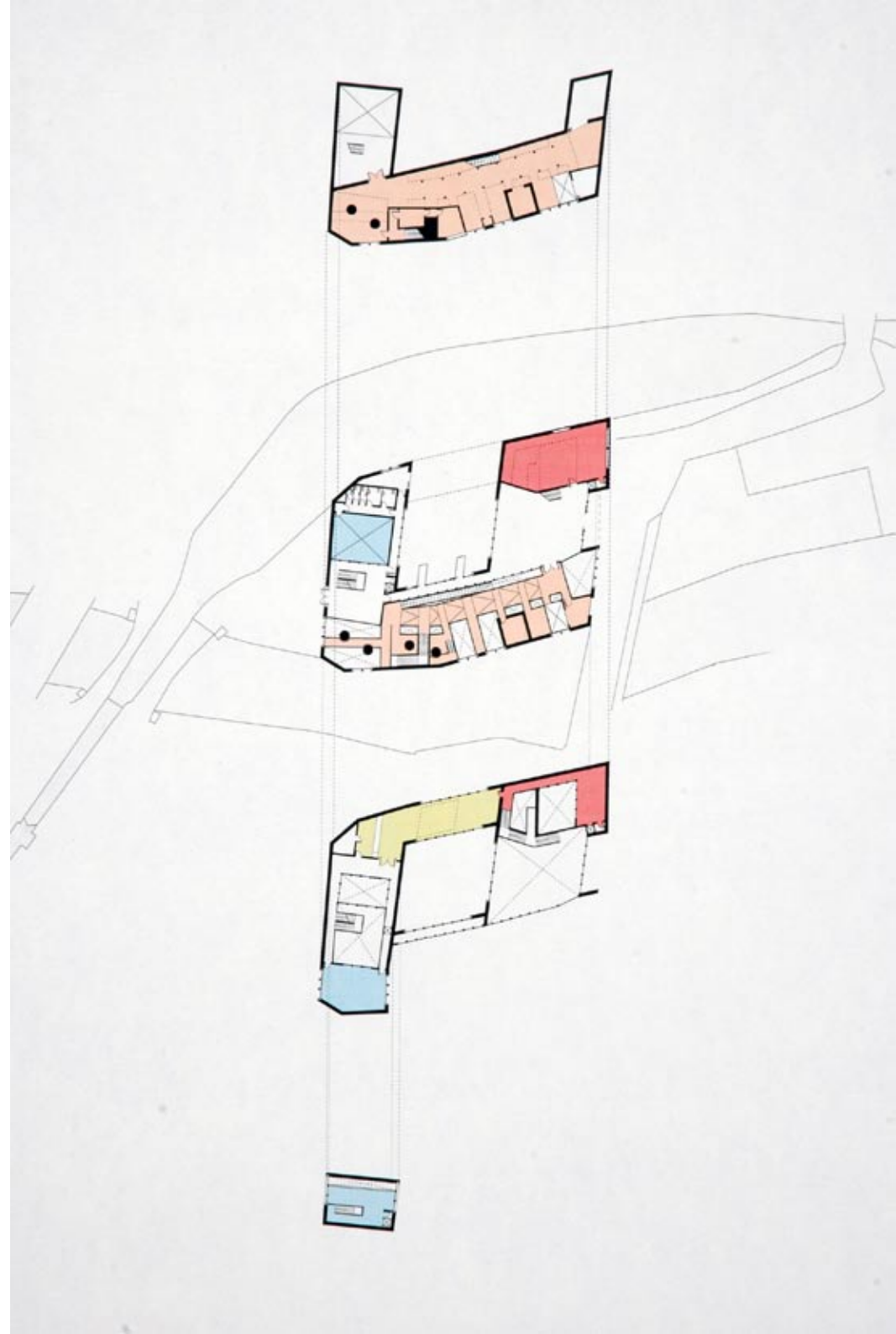


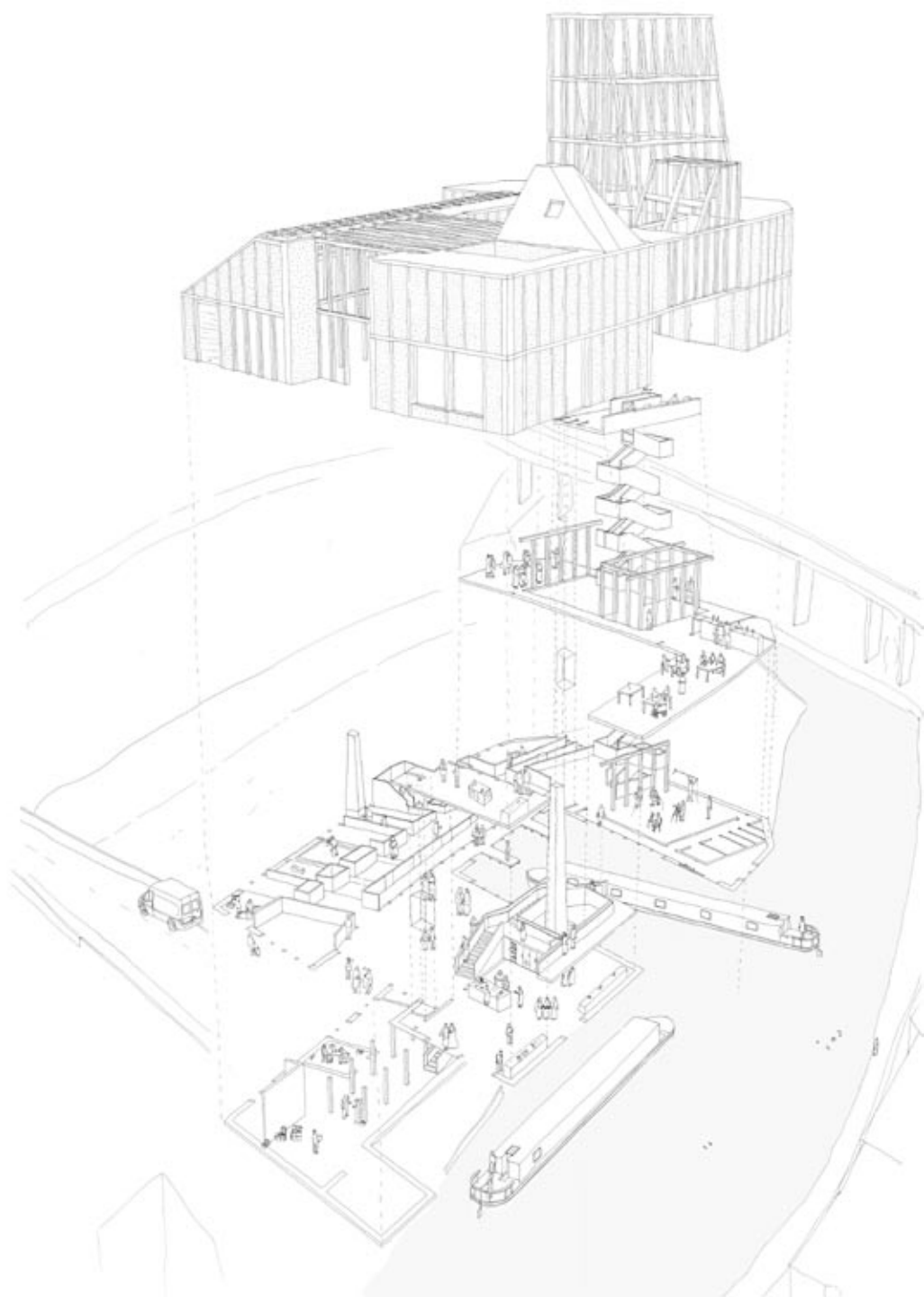




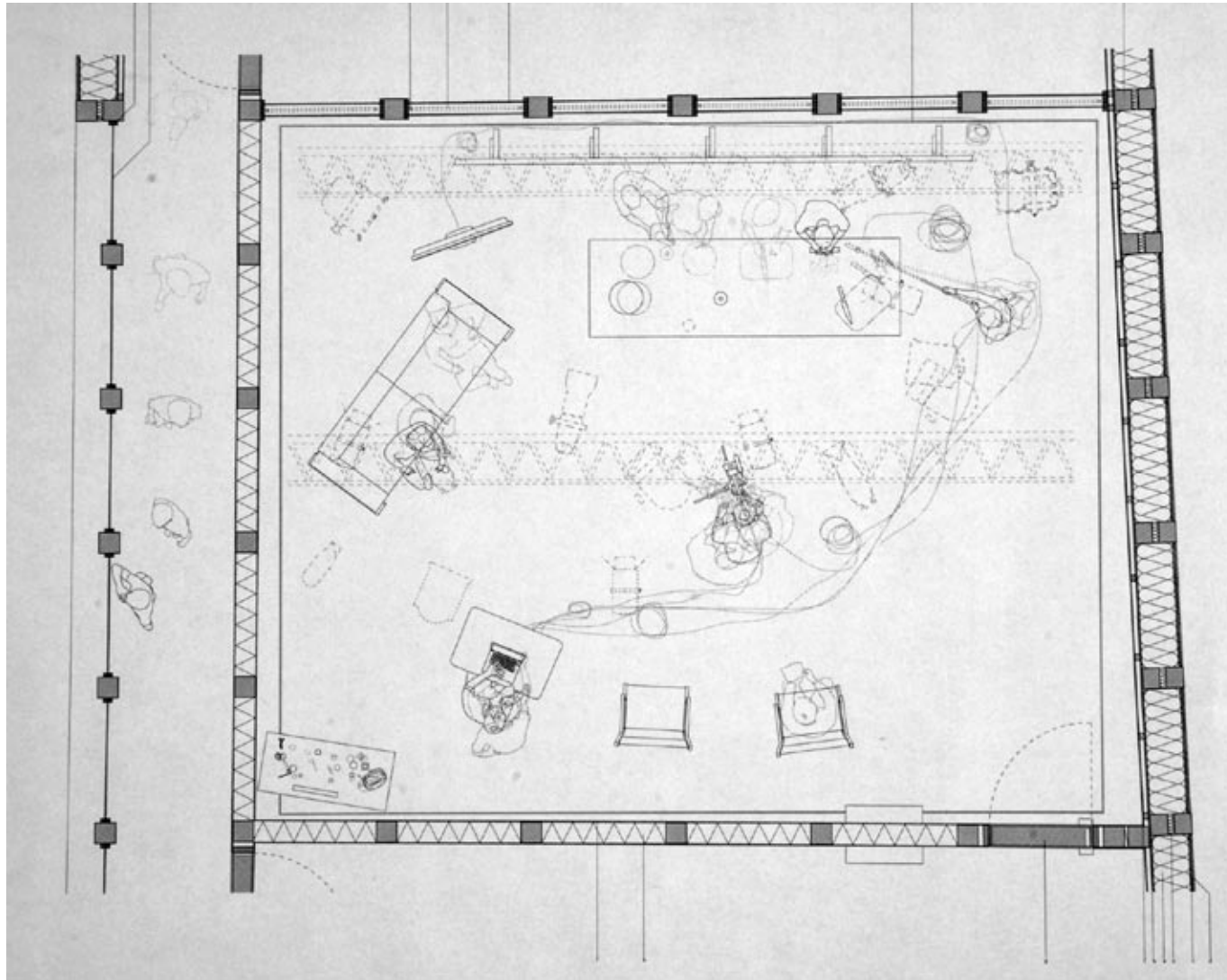
1. Access corridor to upper deck work level.
2. Upper work deck for raised boat.
3. Temporary sliding platform in grooves.
4. Second raised boat workspace.
5. Workshop.
6. Circulation space between living spaces, workshop, and upstairs.
7. Sheltered boat workspace.

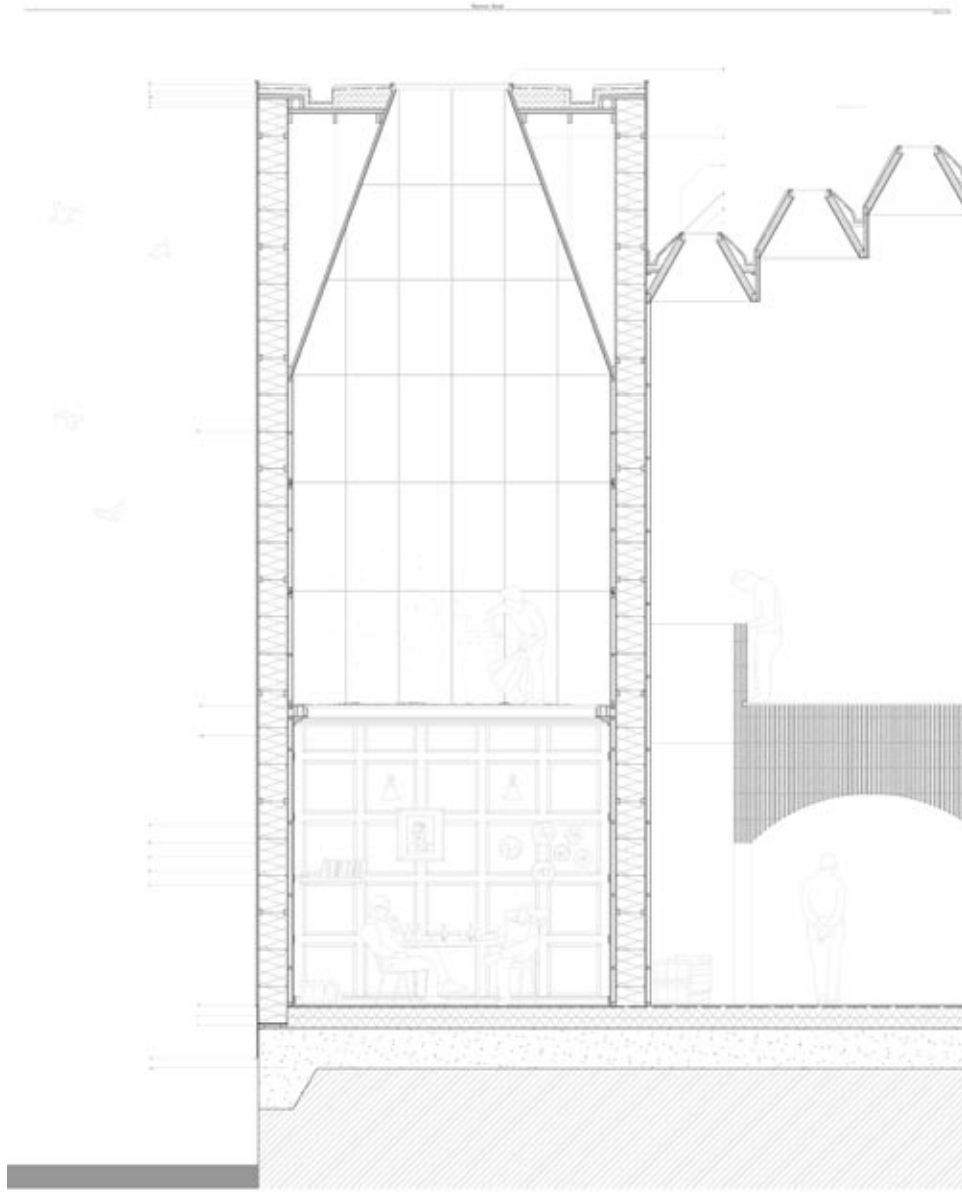




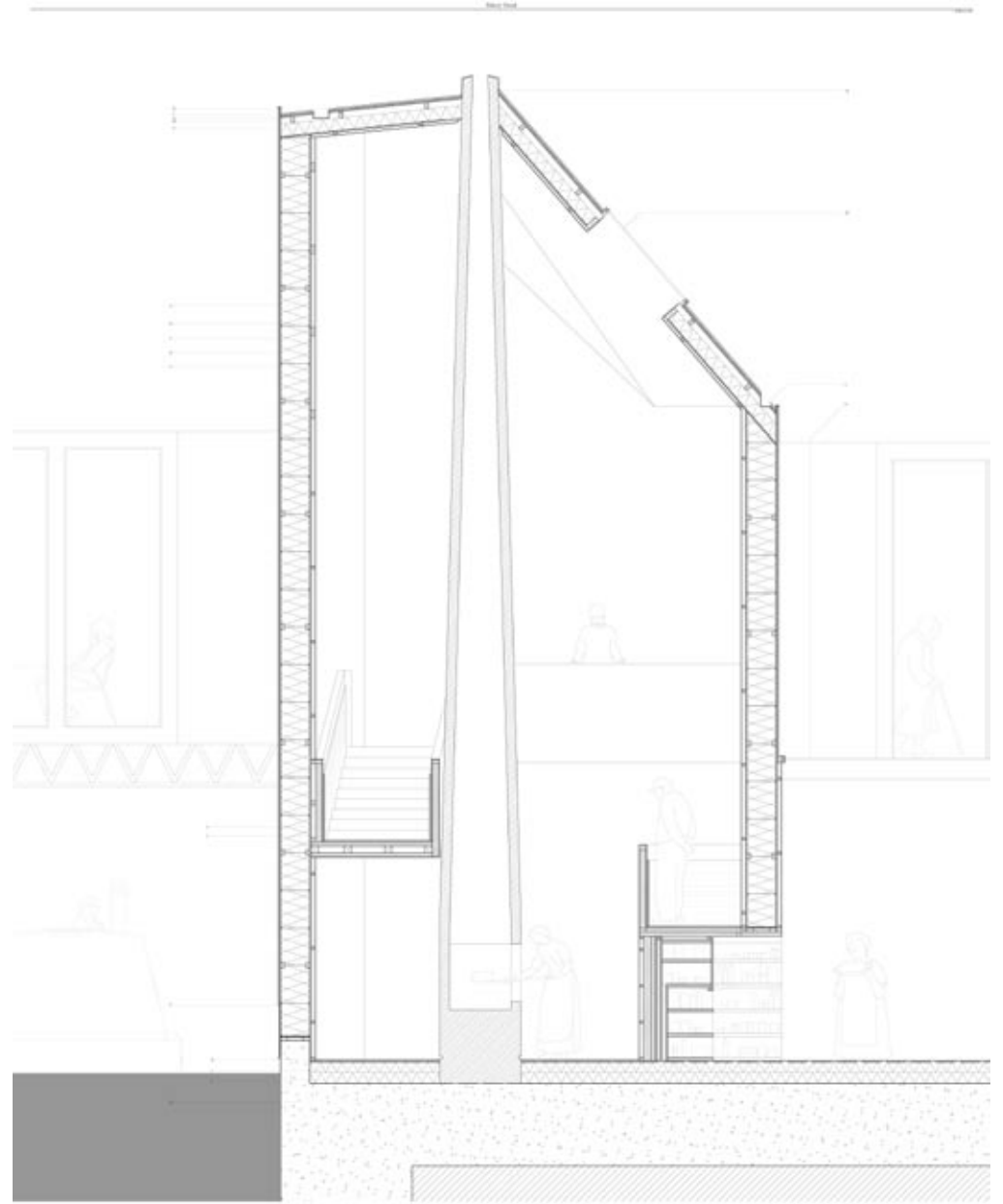








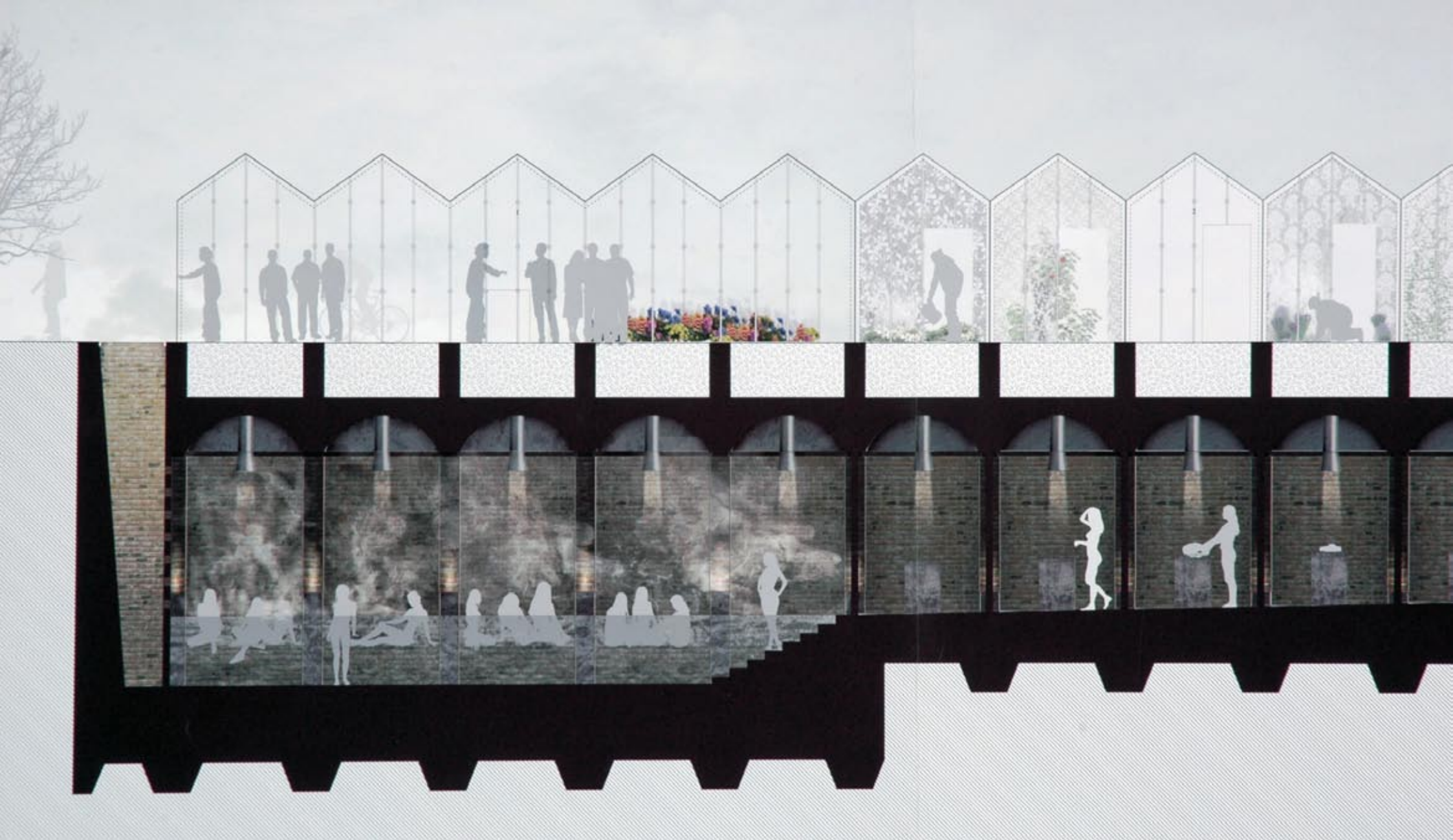
- 1. Glass curtain wall
- 2. Steel frame
- 3. Concrete slab
- 4. Floor finish
- 5. Ceiling finish
- 6. Mechanical duct
- 7. Electrical conduit
- 8. Structural column
- 9. Window frame
- 10. Glass panel
- 11. Steel beam
- 12. Concrete wall
- 13. Floor slab
- 14. Ceiling slab
- 15. Mechanical duct
- 16. Electrical conduit
- 17. Structural column
- 18. Window frame
- 19. Glass panel
- 20. Steel beam
- 21. Concrete wall
- 22. Floor slab
- 23. Ceiling slab
- 24. Mechanical duct
- 25. Electrical conduit
- 26. Structural column
- 27. Window frame
- 28. Glass panel
- 29. Steel beam
- 30. Concrete wall
- 31. Floor slab
- 32. Ceiling slab
- 33. Mechanical duct
- 34. Electrical conduit
- 35. Structural column
- 36. Window frame
- 37. Glass panel
- 38. Steel beam
- 39. Concrete wall
- 40. Floor slab
- 41. Ceiling slab
- 42. Mechanical duct
- 43. Electrical conduit
- 44. Structural column
- 45. Window frame
- 46. Glass panel
- 47. Steel beam
- 48. Concrete wall
- 49. Floor slab
- 50. Ceiling slab

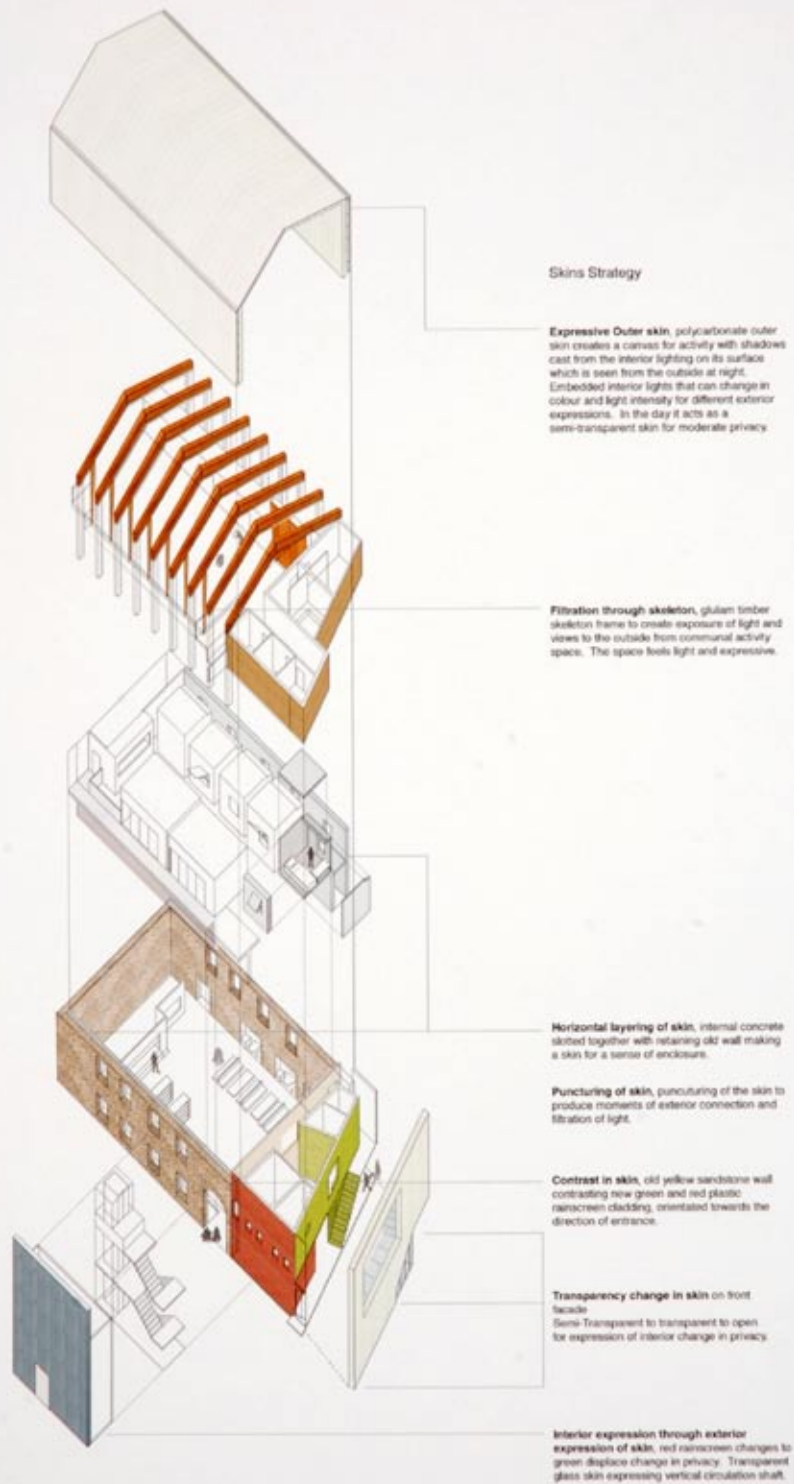


- 1. Glass curtain wall
- 2. Steel frame
- 3. Concrete slab
- 4. Floor finish
- 5. Ceiling finish
- 6. Mechanical duct
- 7. Electrical conduit
- 8. Structural column
- 9. Window frame
- 10. Glass panel
- 11. Steel beam
- 12. Concrete wall
- 13. Floor slab
- 14. Ceiling slab
- 15. Mechanical duct
- 16. Electrical conduit
- 17. Structural column
- 18. Window frame
- 19. Glass panel
- 20. Steel beam
- 21. Concrete wall
- 22. Floor slab
- 23. Ceiling slab
- 24. Mechanical duct
- 25. Electrical conduit
- 26. Structural column
- 27. Window frame
- 28. Glass panel
- 29. Steel beam
- 30. Concrete wall
- 31. Floor slab
- 32. Ceiling slab
- 33. Mechanical duct
- 34. Electrical conduit
- 35. Structural column
- 36. Window frame
- 37. Glass panel
- 38. Steel beam
- 39. Concrete wall
- 40. Floor slab
- 41. Ceiling slab
- 42. Mechanical duct
- 43. Electrical conduit
- 44. Structural column
- 45. Window frame
- 46. Glass panel
- 47. Steel beam
- 48. Concrete wall
- 49. Floor slab
- 50. Ceiling slab











*Featural Section*  
Looking toward West  
Cabin, containing  
bath and stove  
between water,  
middle and coal  
1:100

plan 1:200

