

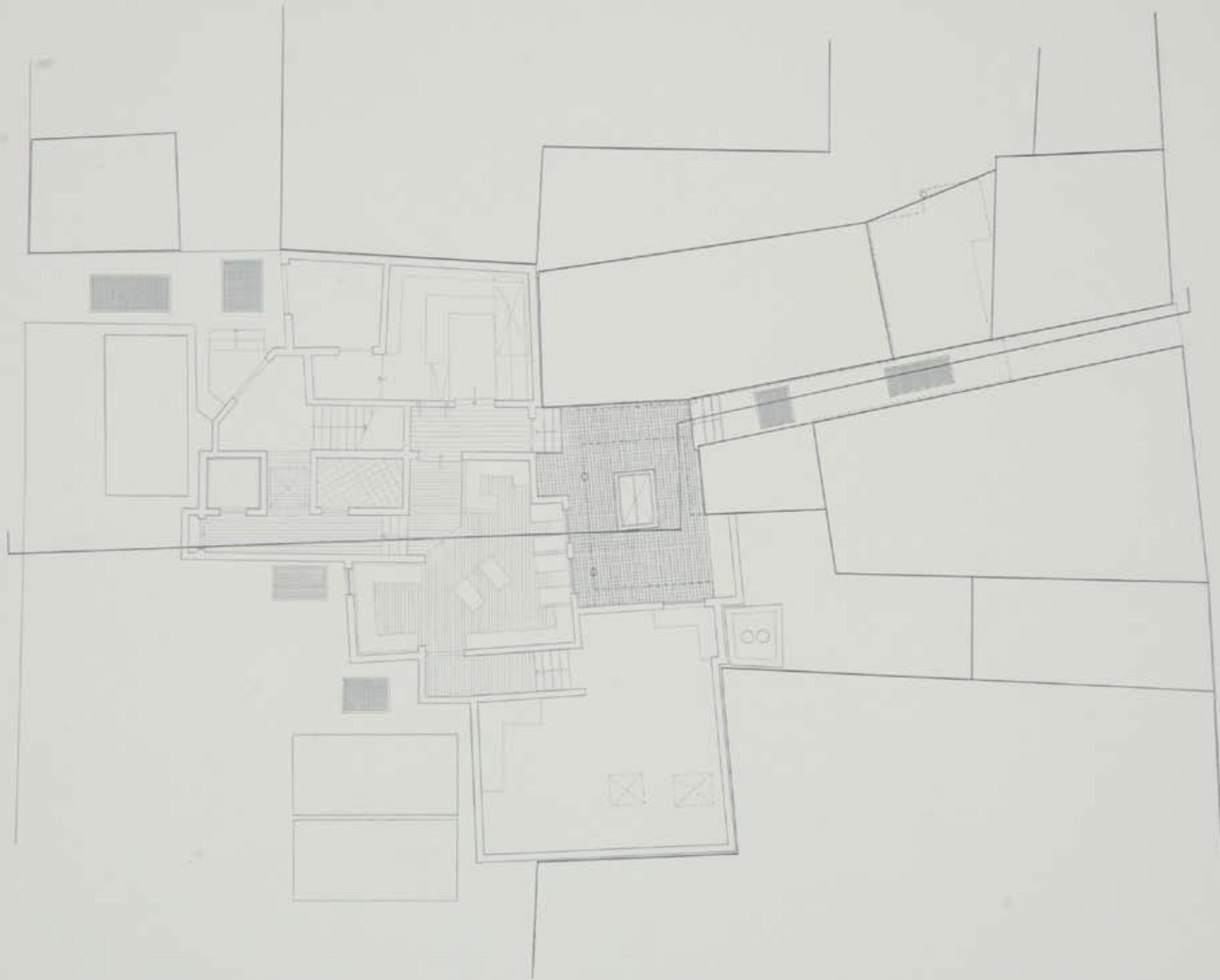
a few images from

Alleyway Tactics



THE SMOKER'S RETREAT
ANGEL ALLEY, NOTTINGHAM

Leather suitcase, stamped 'THE SMOKER'S RETREAT' on the inside of the lid. The paper is cream-colored, with a small logo in the center. The white envelope is also stamped with the logo. The small items are dark-colored and are arranged in a row. The suitcase is made of dark brown leather and has a handle on the bottom and two latches on the sides.





THE SUITCASE CO. LTD.
LONDON





Open Alley ways.

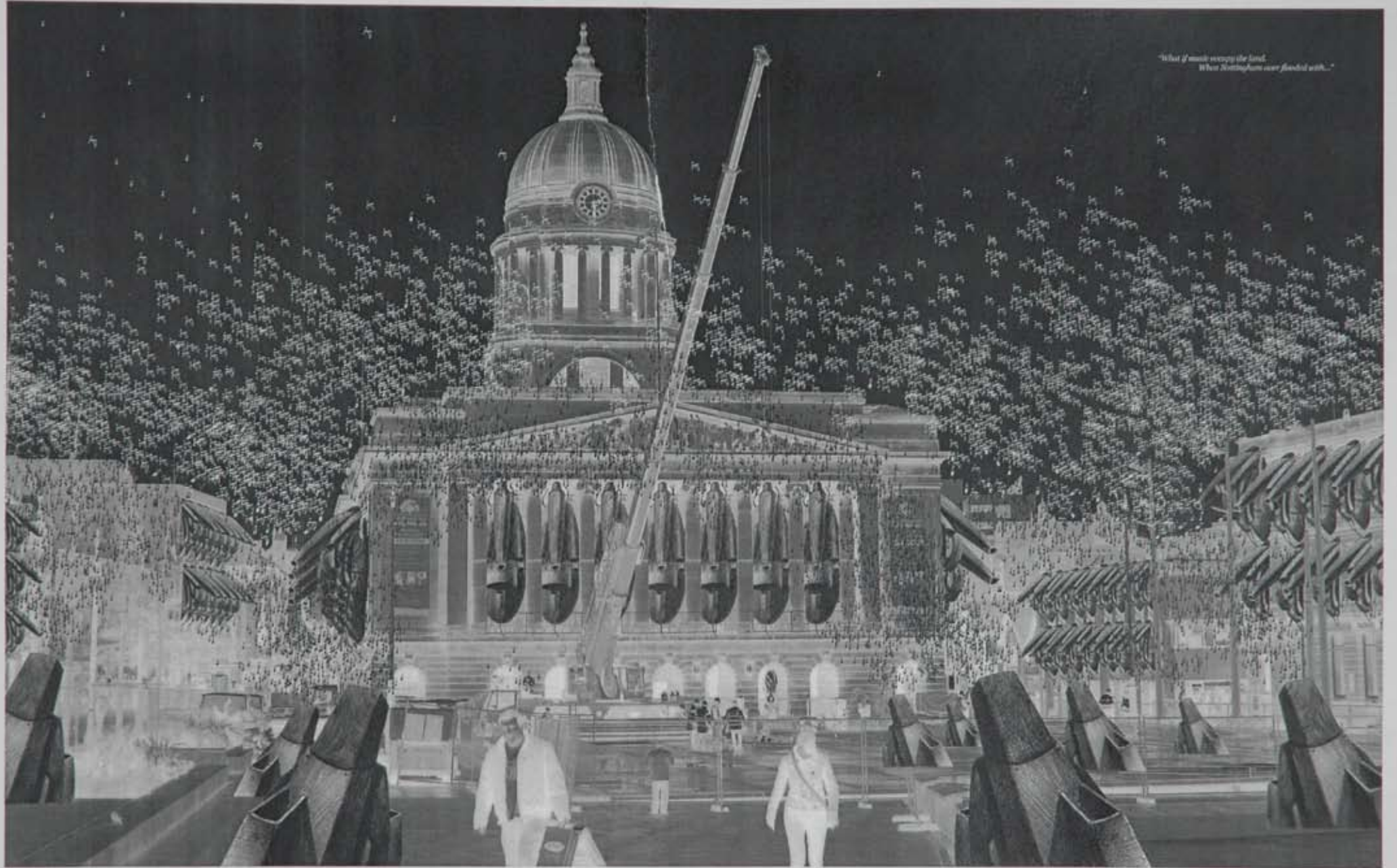
Comments: _____

One week before the event, we travelled to Nottingham and put posters and flyers advertising the 'Open Alleyways' event all over the city.









2046

Market Square, Nottingham might filled up with music and more like stadium. The way of banking into existing buildings can be apply in any other structure not only the one in Peak Lane. Always might not be forgotten, people of Nottingham might use them again and by that time music will be anywhere...

Hidden Threads

LIVERPOOL: hidden threads
The Living Market

"The ordinary practitioners of the city live 'down below'. Below the thresholds at which visibility begins. The walk – an elementary form of this experience of the city: they are walkers, 'Wanderstanner', whose bodies follow the thick and thin of an urban 'text' they write without being able to read it. These practitioners make use of spaces that cannot be seen. It is as though the practices organising a bustling city were characterised by their blindness. The networks of these moving intersecting writings compose a manifold story, shaped out of fragments, out of trajectories and alterations of spaces, in relation to representation, it remains daily and indefinitely other."

Michel de Certeau
The Practice of Everyday Life



Sam



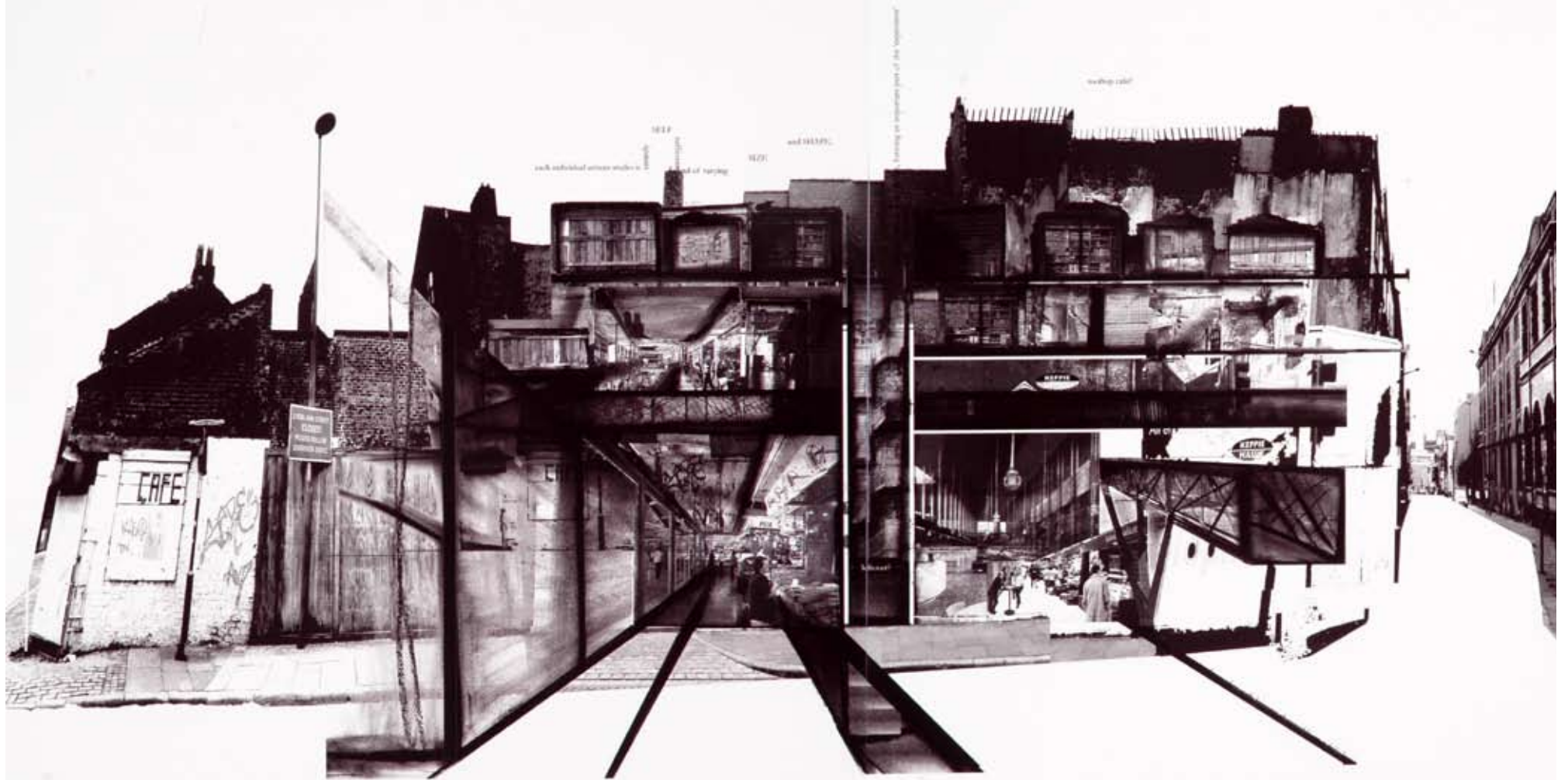
'the art organisation'



John's cafe

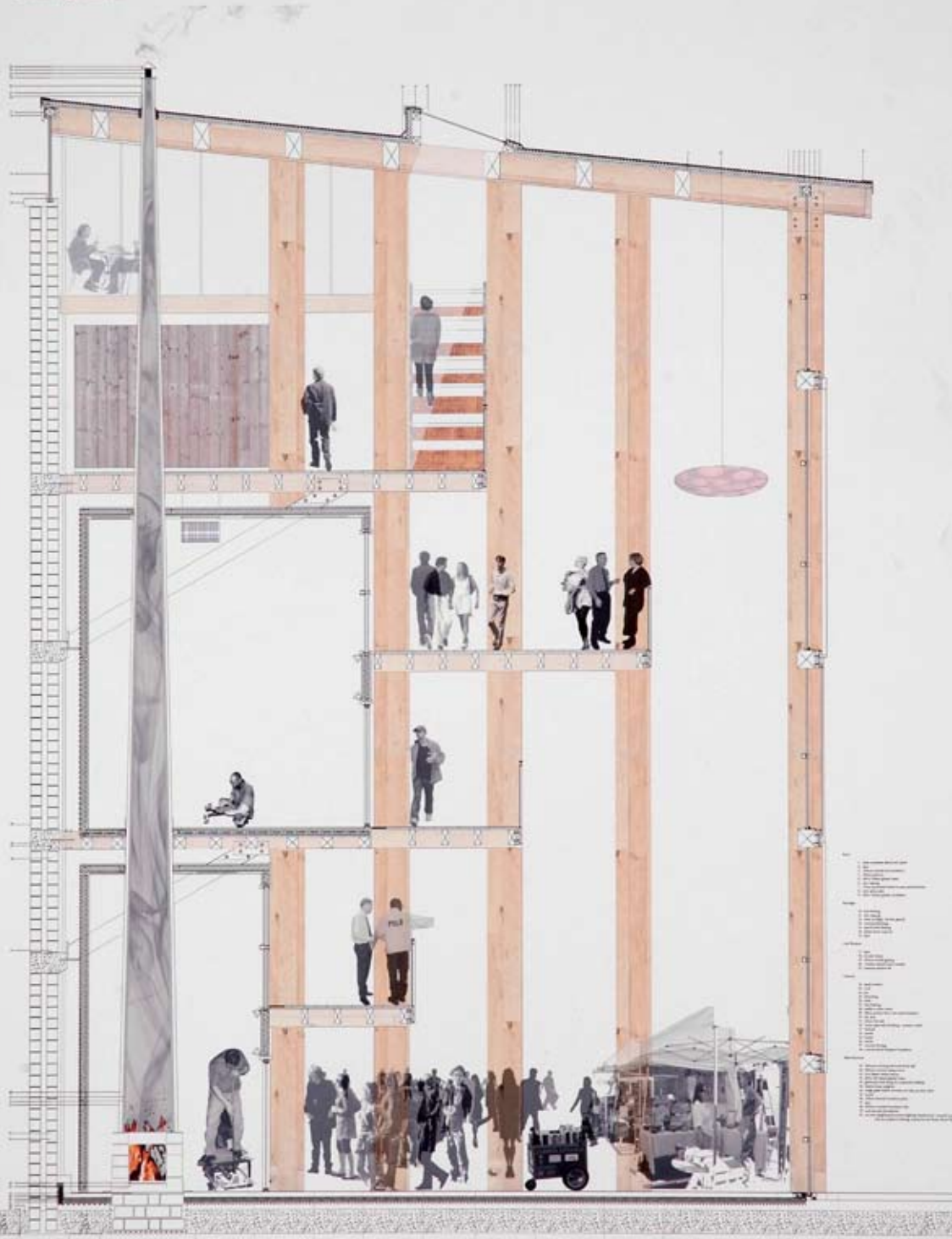


...a walk to nowhere...
*I arrived in Liverpool, but
 I didn't get to the urban retirement that my
 'intentional' in the west.
 Social encounters narrate a journey to my destination.*

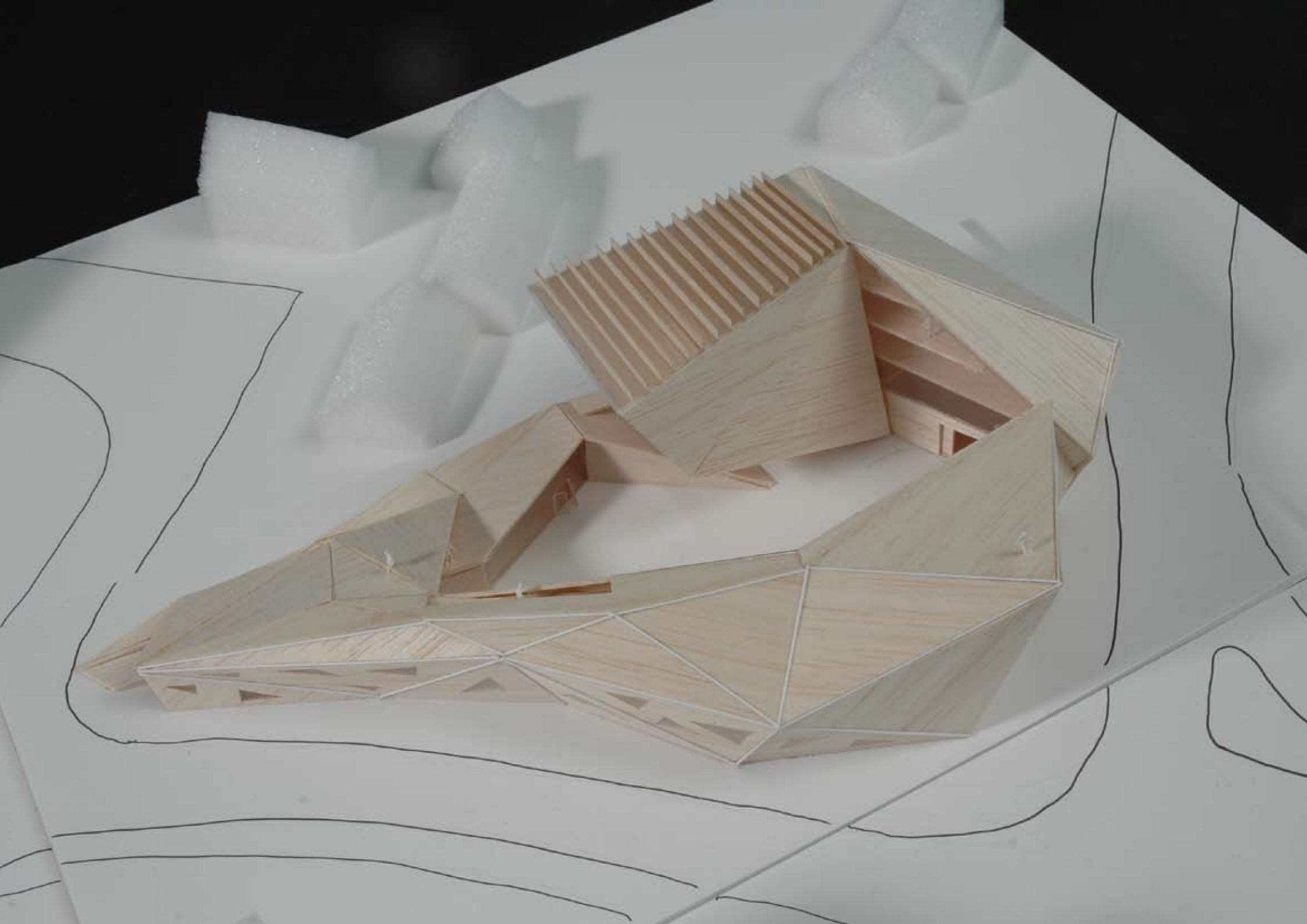


The drawings

The drawing is
a series of
a complex of
relationships. For
to have a place



- 1. ...
- 2. ...
- 3. ...
- 4. ...
- 5. ...
- 6. ...
- 7. ...
- 8. ...
- 9. ...
- 10. ...
- 11. ...
- 12. ...
- 13. ...
- 14. ...
- 15. ...
- 16. ...
- 17. ...
- 18. ...
- 19. ...
- 20. ...
- 21. ...
- 22. ...
- 23. ...
- 24. ...
- 25. ...
- 26. ...
- 27. ...
- 28. ...
- 29. ...
- 30. ...
- 31. ...
- 32. ...
- 33. ...
- 34. ...
- 35. ...
- 36. ...
- 37. ...
- 38. ...
- 39. ...
- 40. ...
- 41. ...
- 42. ...
- 43. ...
- 44. ...
- 45. ...
- 46. ...
- 47. ...
- 48. ...
- 49. ...
- 50. ...
- 51. ...
- 52. ...
- 53. ...
- 54. ...
- 55. ...
- 56. ...
- 57. ...
- 58. ...
- 59. ...
- 60. ...
- 61. ...
- 62. ...
- 63. ...
- 64. ...
- 65. ...
- 66. ...
- 67. ...
- 68. ...
- 69. ...
- 70. ...
- 71. ...
- 72. ...
- 73. ...
- 74. ...
- 75. ...
- 76. ...
- 77. ...
- 78. ...
- 79. ...
- 80. ...
- 81. ...
- 82. ...
- 83. ...
- 84. ...
- 85. ...
- 86. ...
- 87. ...
- 88. ...
- 89. ...
- 90. ...
- 91. ...
- 92. ...
- 93. ...
- 94. ...
- 95. ...
- 96. ...
- 97. ...
- 98. ...
- 99. ...
- 100. ...







1. 1st floor
2. 2nd floor
3. 3rd floor
4. 4th floor
5. 5th floor
6. 6th floor
7. 7th floor
8. 8th floor
9. 9th floor
10. 10th floor
11. 11th floor
12. 12th floor
13. 13th floor
14. 14th floor
15. 15th floor
16. 16th floor
17. 17th floor
18. 18th floor
19. 19th floor
20. 20th floor

Credits

p2- 4. M Slade

p5. F Chan, M Hull, M Slade

p6. R Fennell

p7. N Beer

p8. F Chan

p10-12. B Spottiswoode

p.13. S Li

p.14 C ShaNley

p.15 M Hung