

Stoke Town & Spode Works Roundtable Workshop

Tuesday 12th October
5.30pm - 8.00pm

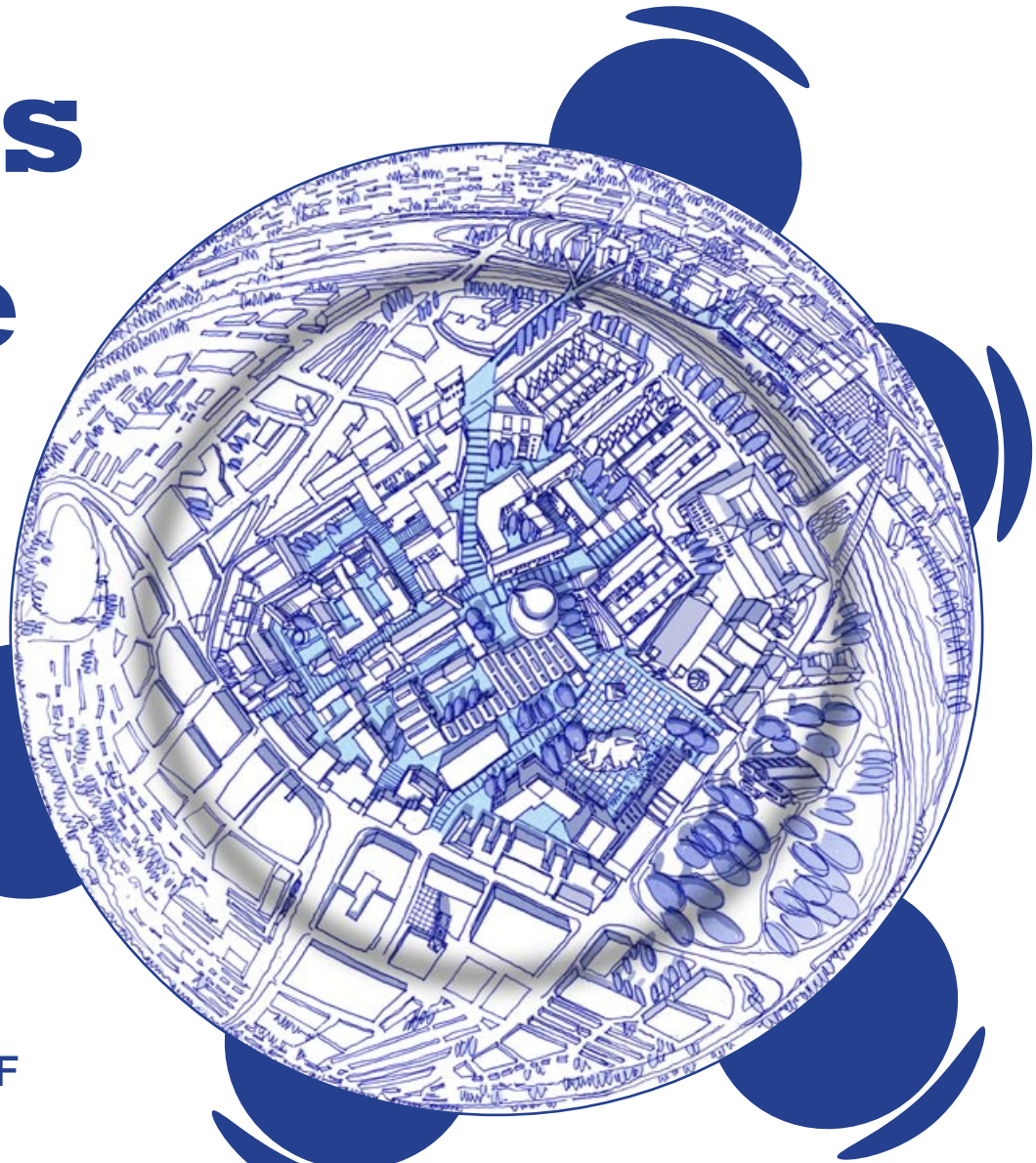
Venue: The Kings Hall, Kingsway. Stoke Town, ST4 1JF



GEHL ARCHITECTS



ARUP



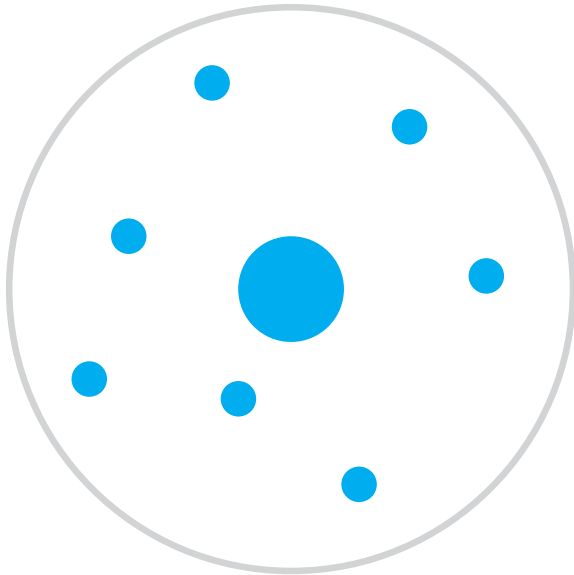
The plan for this evening:

Schedule:

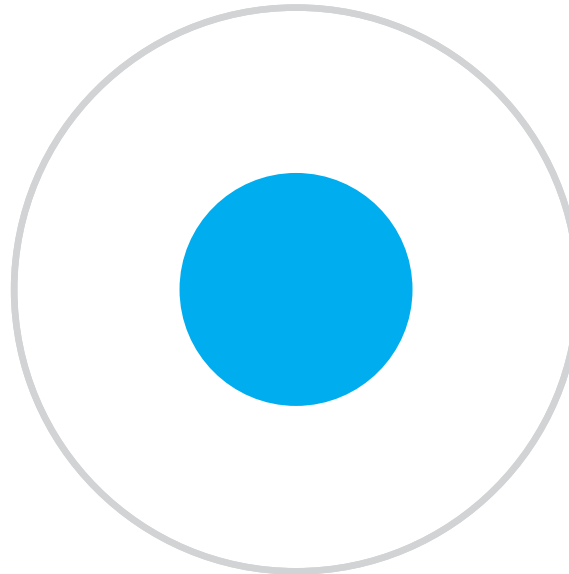
17.15 - 17.30	<i>Arrival/registration</i>
17.30 - 17.35	Introduction
17.35 - 18.05	Workshop Session 1 - Mapping the issues
18.05 - 18.15	<i>Tea/Coffee Break</i>
18.15 - 18.30	Presentation by David Rudlin (URBED)
18.30 - 19.15	Workshop Session 2 - Levels of Intervention
19.15 - 19.30	Prioritising Change
19.30 - 19.45	Feedback from Groups
19.45 - 20.00	Sum up and close



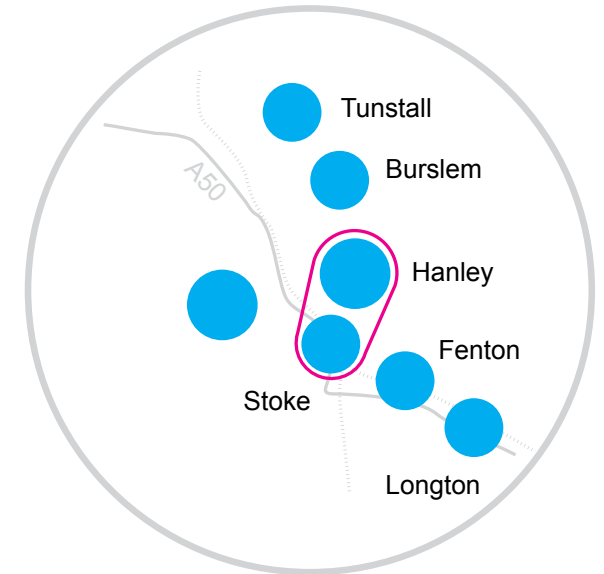
Introduction



British City
Tiny town centre
surrounded by mostly
suburbs with local centres



Continental City
Much bigger centre with
traditionally less affluent
suburbs



Stoke-on-Trent
Six town centres

Stoke-upon-Trent
Part of city centre
- Station
- College
- University
- Market
- Minster



The role of Stoke in Stoke

Grow your own urbanism

**Rediscovery, Repair &
Renewal**

Workshop Session 1

17.35 - 18.05 - Mapping the issues

Around your tables start by looking and working across three scales;

Wider Issues - The role of Stoke in Stoke

Local Issues - Stoke Town

Site Issues - The Spode Site

- *What is it that you like most about Stoke-upon-Trent/Stoke Town/Spode?*
- *What is it that you dislike most about Stoke-upon-Trent/Stoke Town/Spode?*
- *If possible can you identify where on the map these likes and dislikes are located?*

Competition Presentation

18.15 - 18.30 - By David Rudlin (URBED)

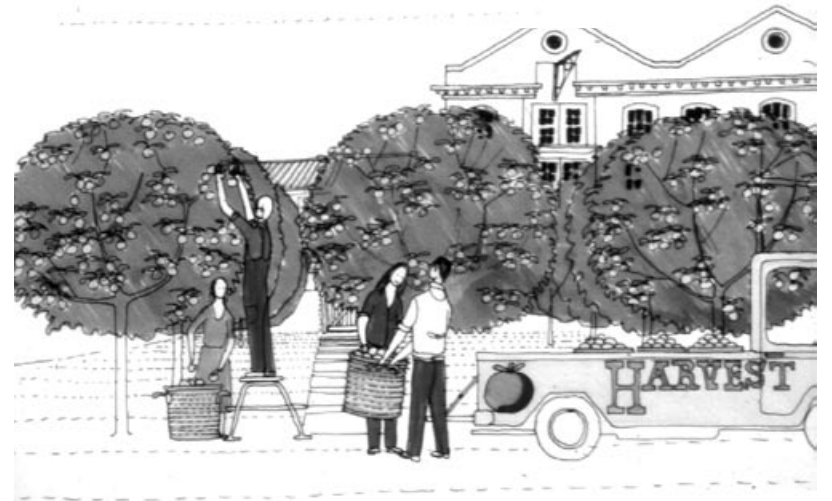
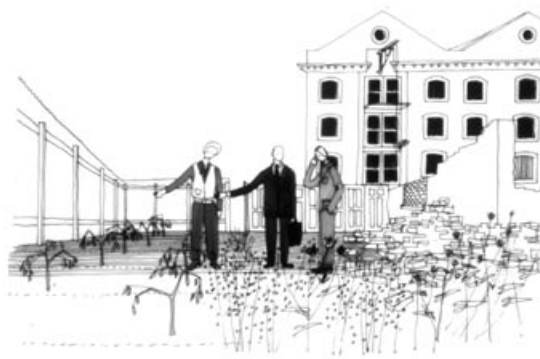
Stoke-upon-Trent



GEHL ARCHITECTS



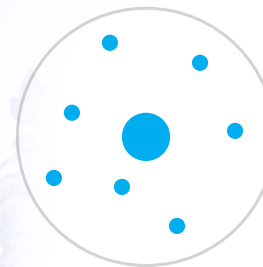
ARUP



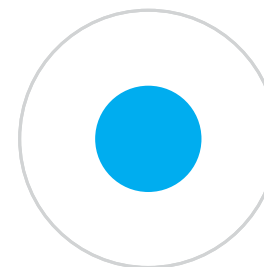
The Idea

1

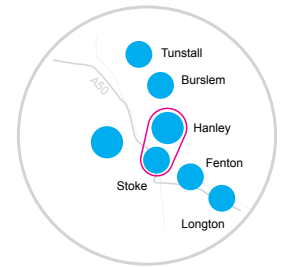
The role of Stoke in Stoke



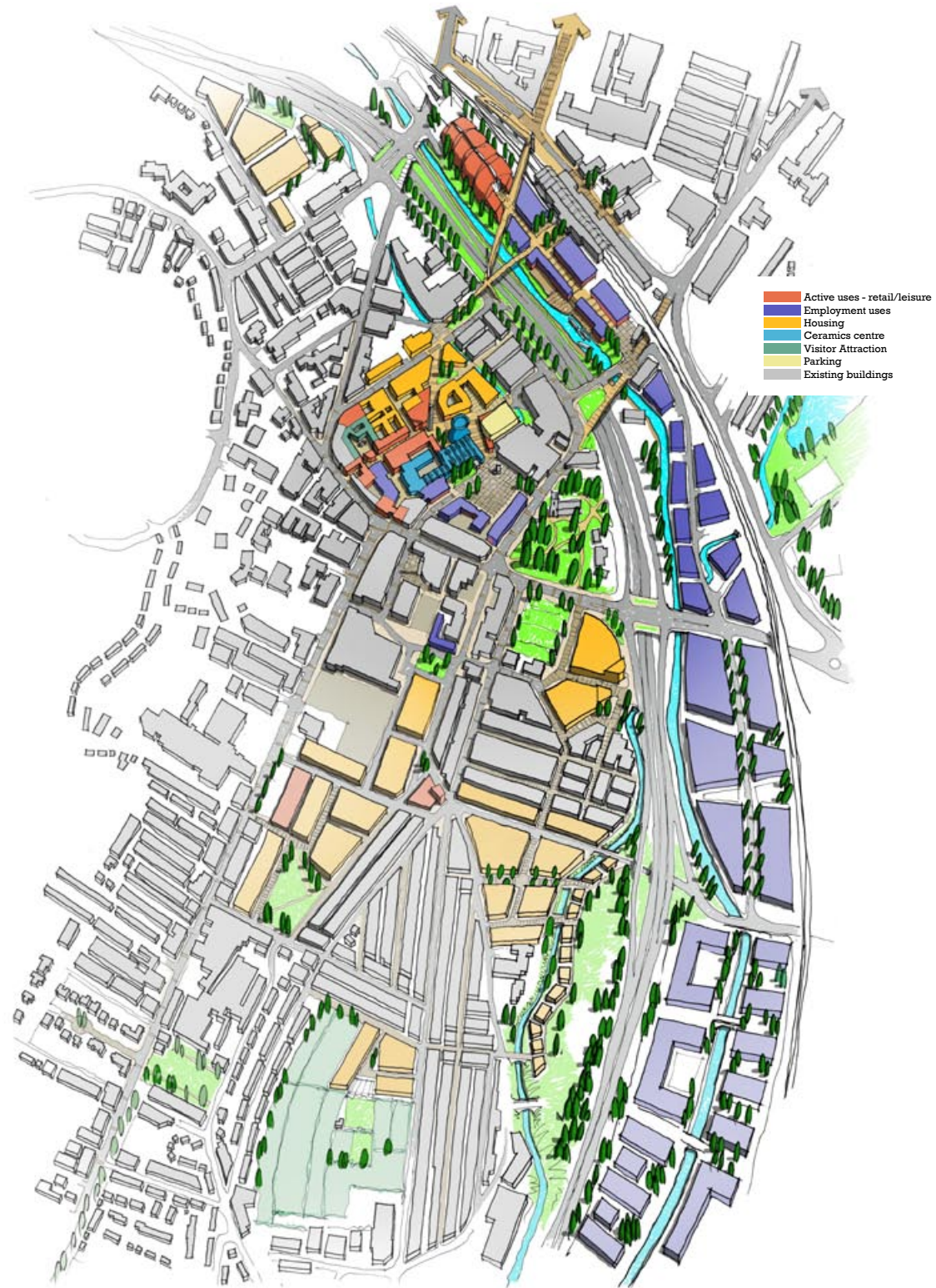
British Cities:
Tiny centres surrounded
by suburbs with local
centres



Continental Cities:
Much bigger centres with
often quite poor quality
suburbs



Stoke-on-Trent:
Polycentric city - the
best of both worlds with
Stoke-upon-Trent part of
an expanded city centre
with functions such as
the Station, Town Hall,
College, University, Min-
ster and Market.



Employment



Convention Centre/venue



Station Approach



Major employment



New housing



The Spode Site



International Ceramics Centre



Spode Visitor Attraction



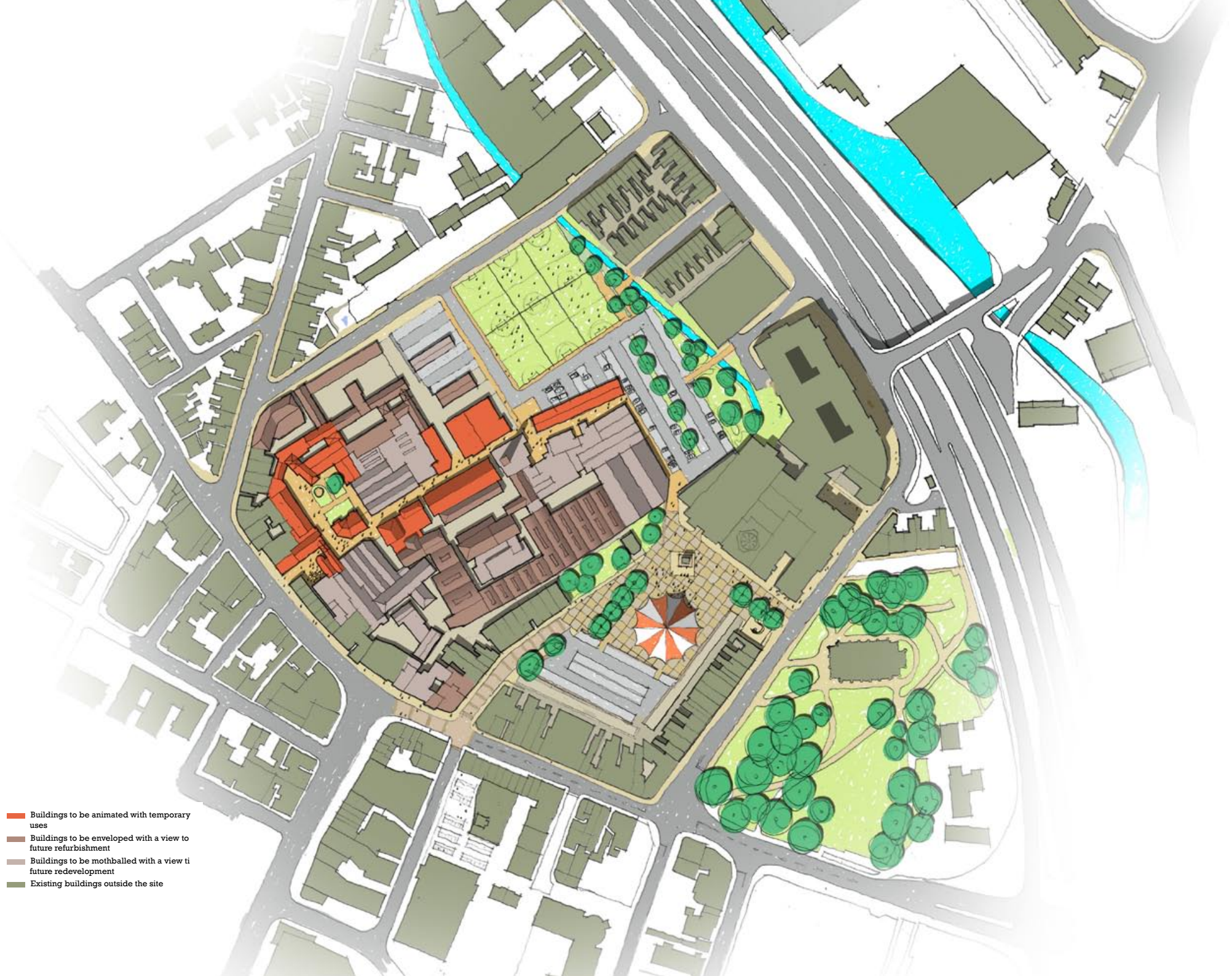
Potters Village





2

**Grow
your own
urbanism**



- Buildings to be animated with temporary uses
- Buildings to be enveloped with a view to future refurbishment
- Buildings to be mothballed with a view to future redevelopment
- Existing buildings outside the site

Circus Square

- Buildings to be animated with temporary uses
- Buildings to be enveloped with a view to future refurbishment
- Buildings to be mothballed with a view to future redevelopment
- Existing buildings outside the site

**Relocated
car park**



New Square



Activity



Sports uses



Buildings

- Buildings to be animated with temporary uses
- Buildings to be enveloped with a view to future refurbishment
- Buildings to be mothballed with a view to future redevelopment
- Existing buildings outside the site



Spode Tours

Mothballed Buildings



Uses

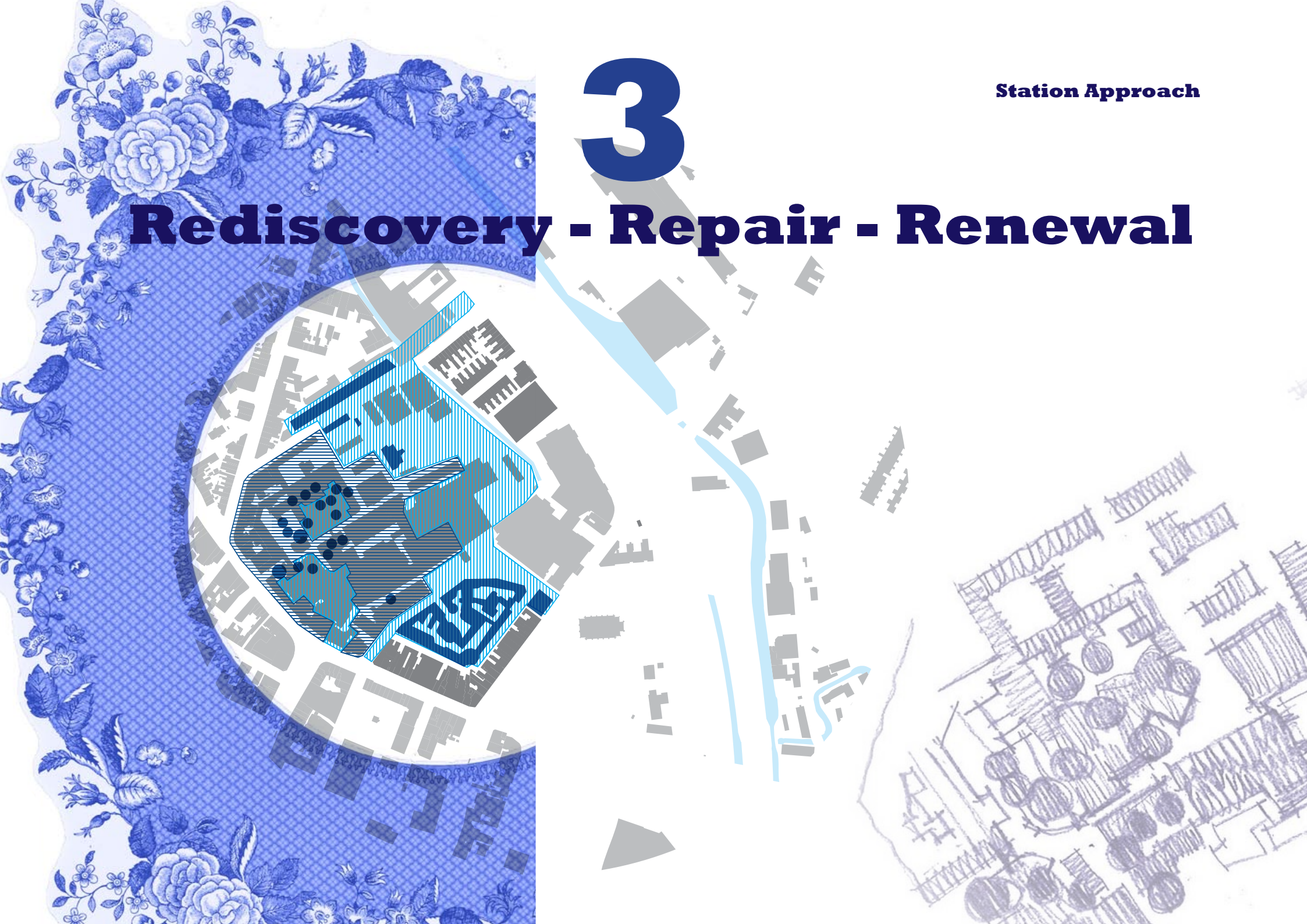
- Buildings to be animated with temporary uses
- Buildings to be enveloped with a view to future refurbishment
- Buildings to be mothballed with a view to future redevelopment
- Existing buildings outside the site

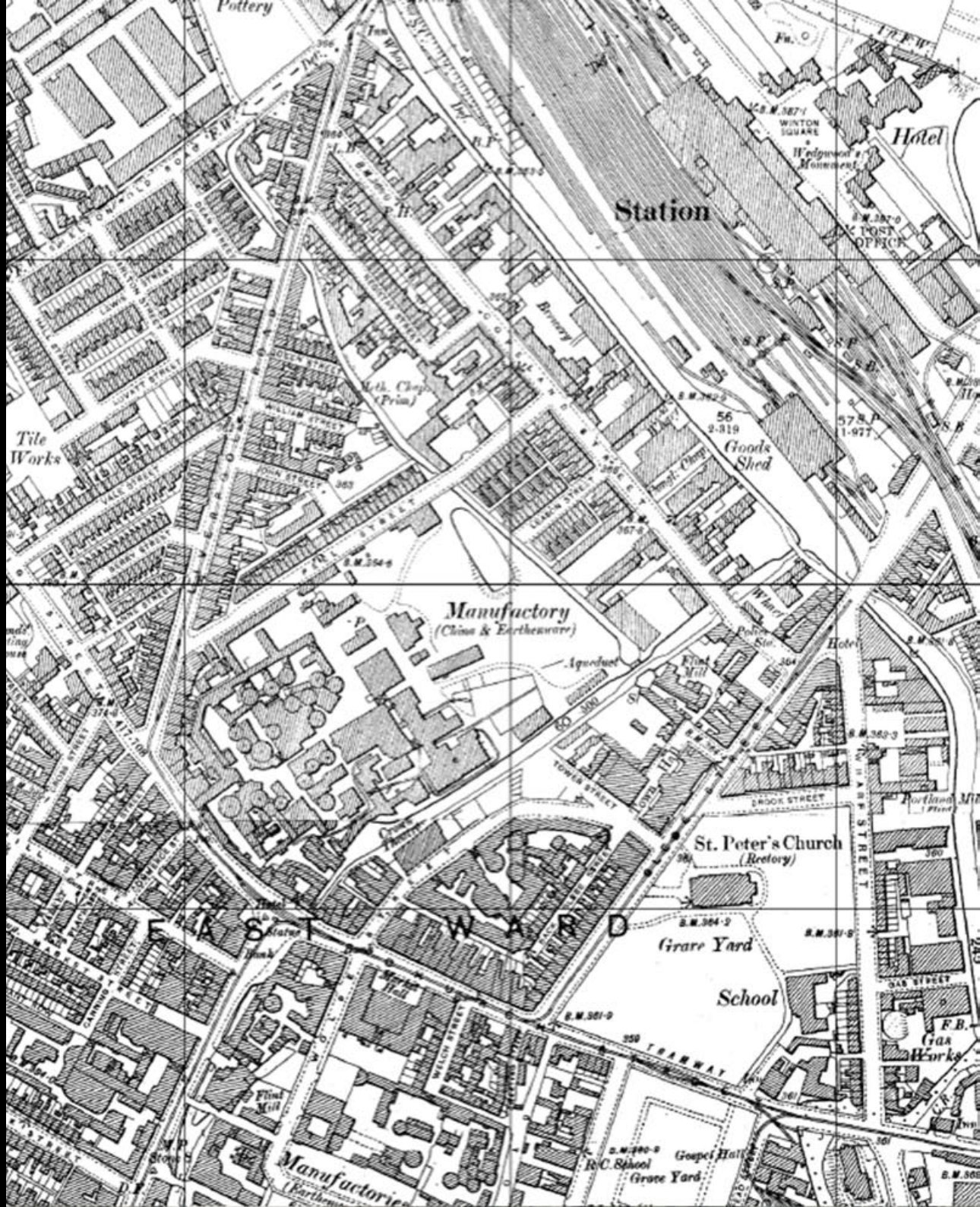


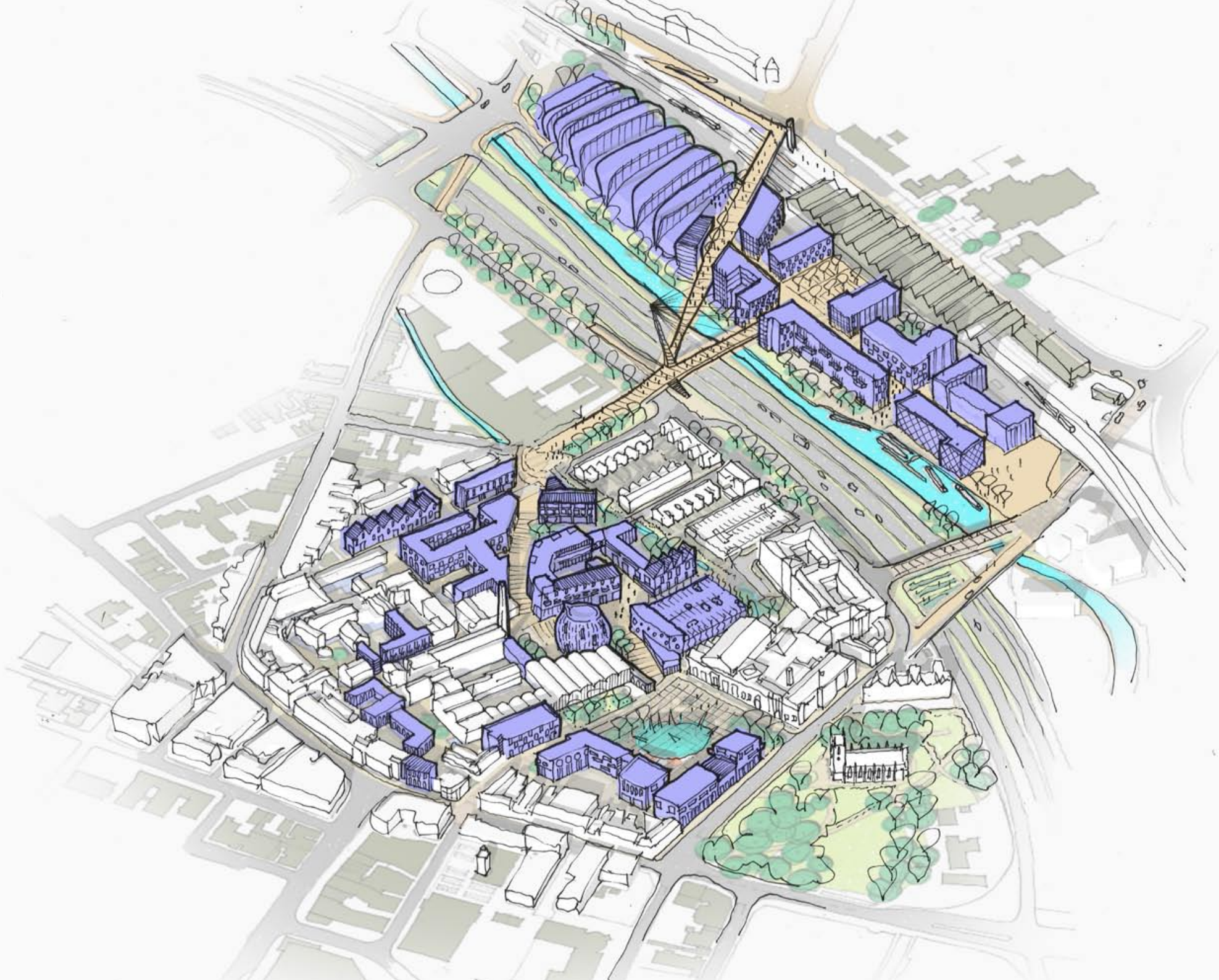
Markets, stalls, studios, cafes

3

Rediscovery - Repair - Renewal





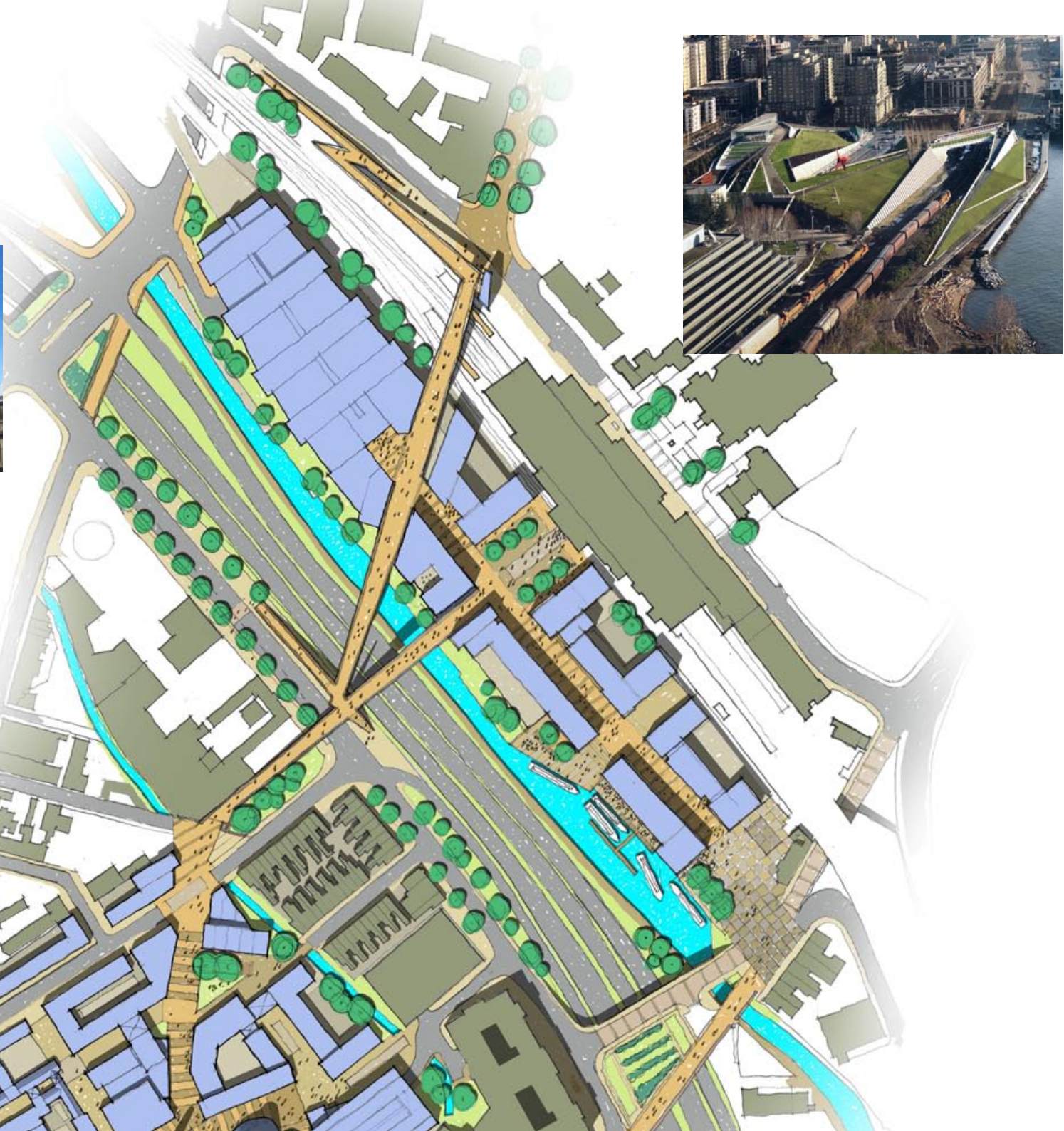


The Station



The Stoke Bridge

Station Square



The Spode site

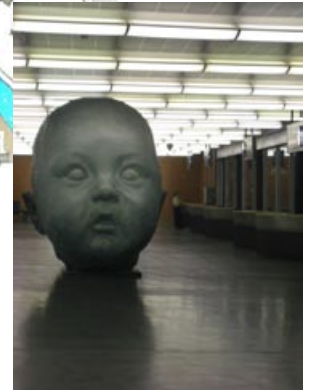


Creative Courts



**The
Spode
Lanes**

**The hidden
landmark**



Circus Square





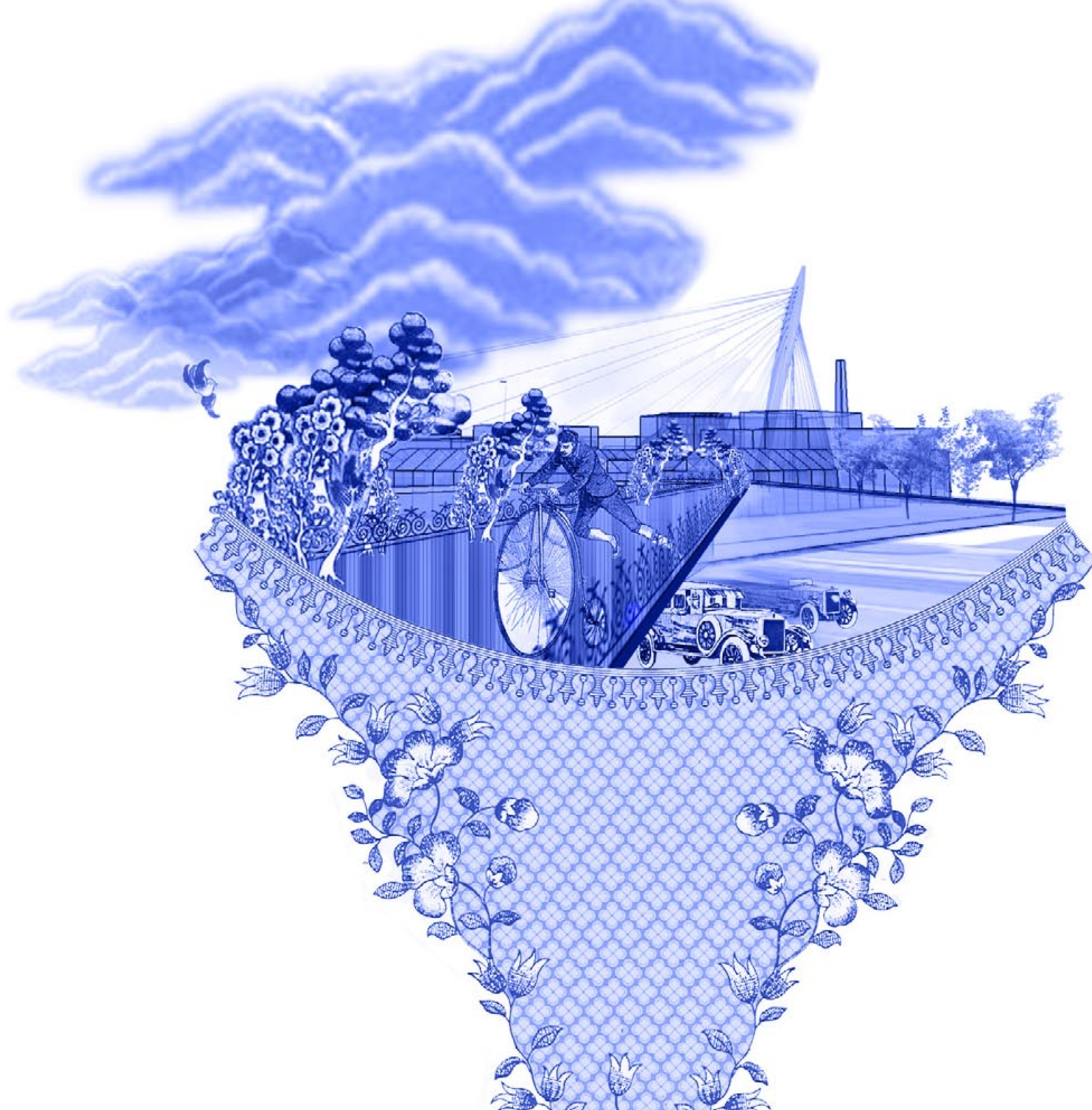
Consultation



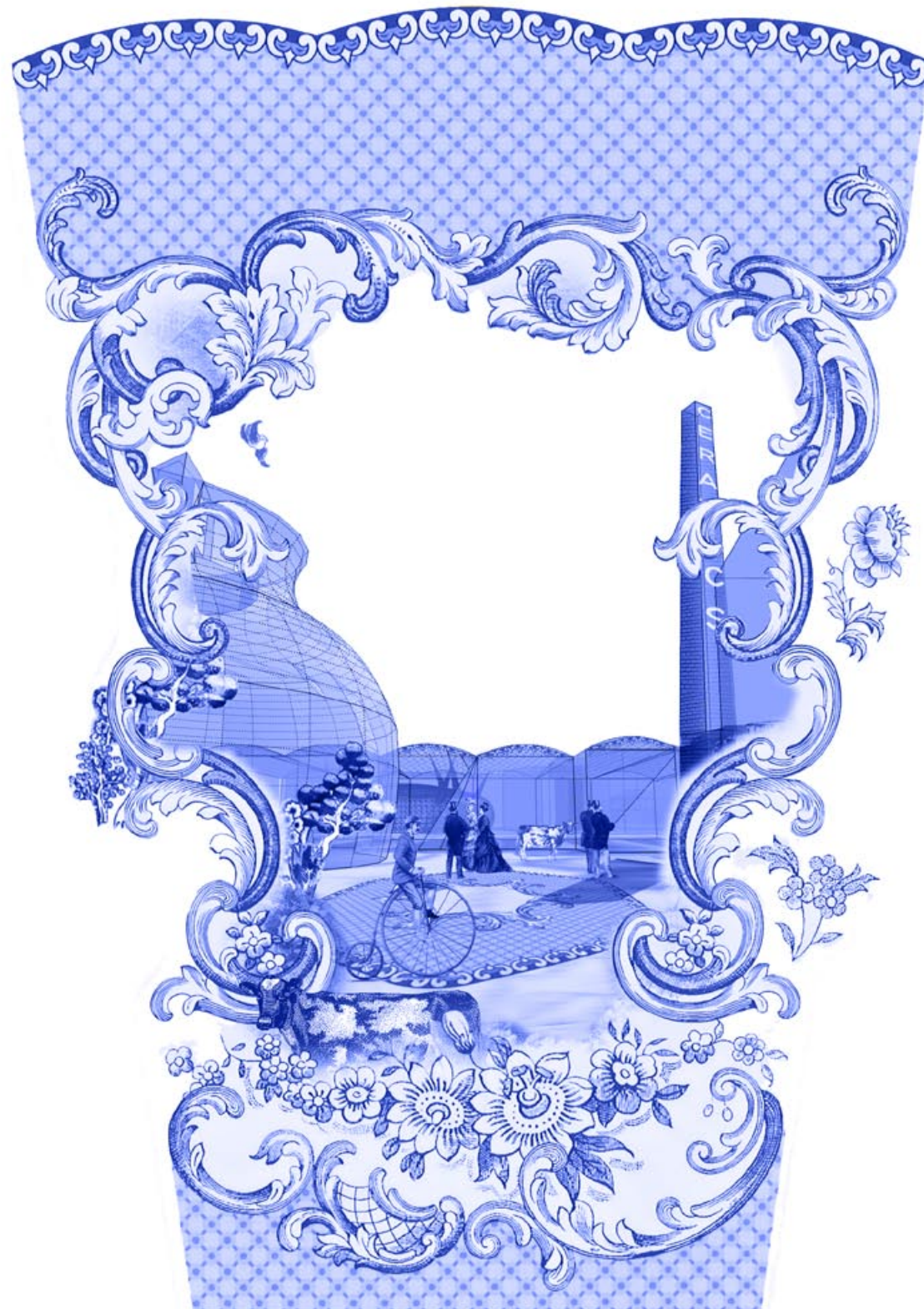


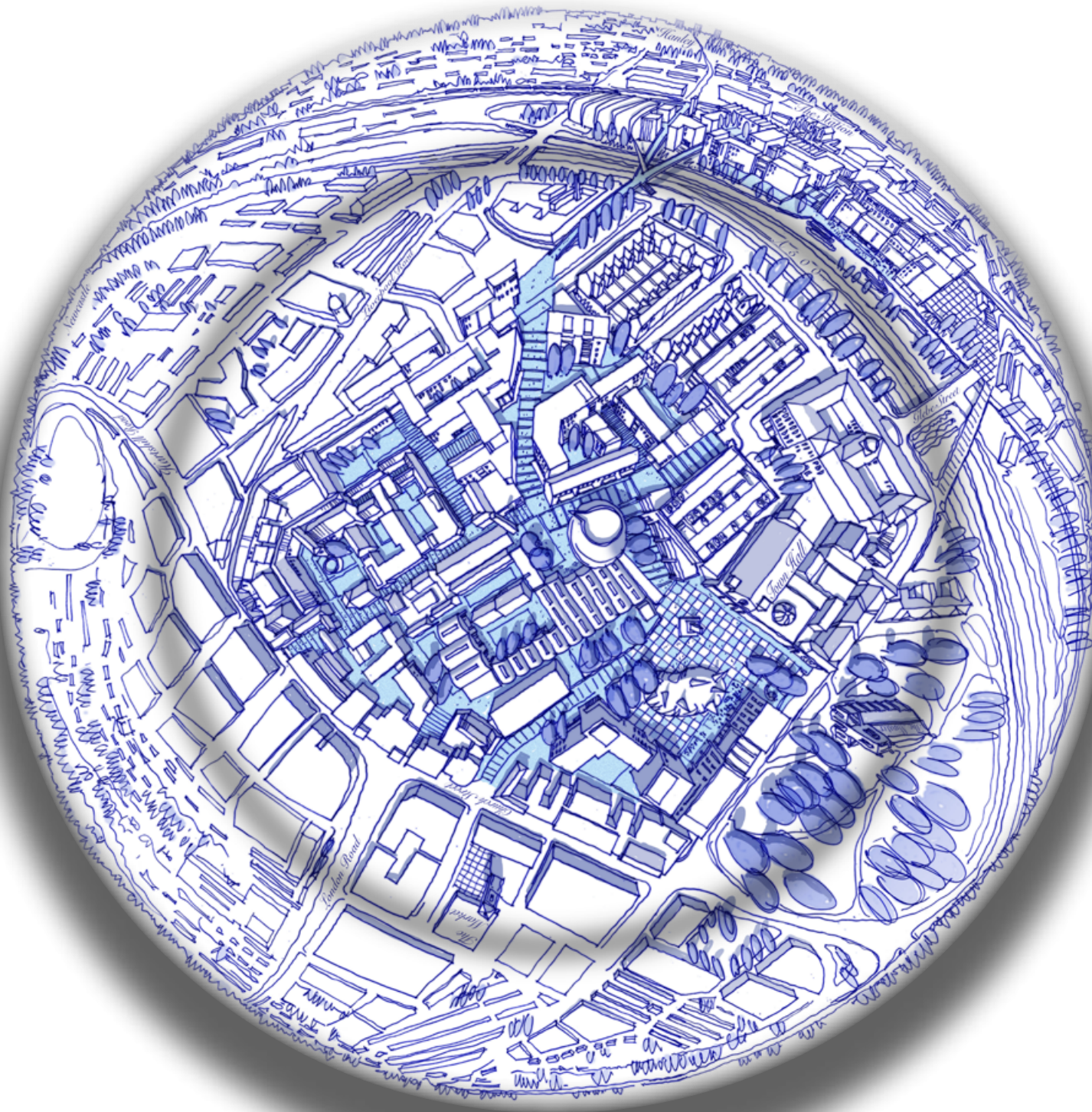




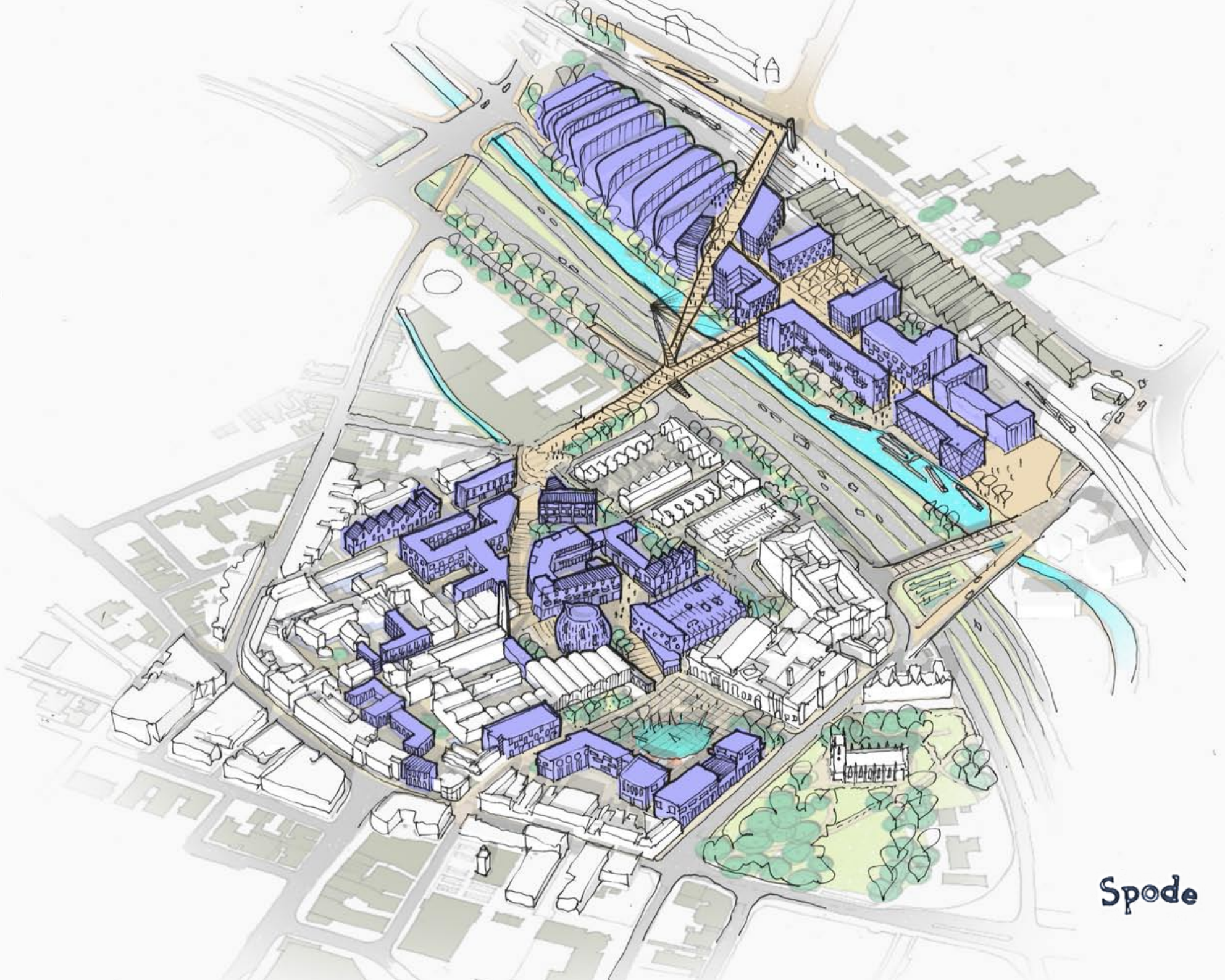








Spode



Spode

Workshop Session 2

18.30 - 19.15 - Levels of intervention over time

Now having heard our initial ideas for Stoke town and the Spode site

- *What would you like to see happen in Stoke Town in the near/distant future?*
- *What would you like to see happen on the Spode site in the near/distant future?*



19.15 - 19.30 - Prioritising Change

- *Around your own tables, each member can now choose your top 5 interventions by placing a tick on the appropriate post-it note.*

19.30 - 19.45 - Feedback

19.55 - 20.00 - Sum up & Close

Thank you all for coming along this evening

