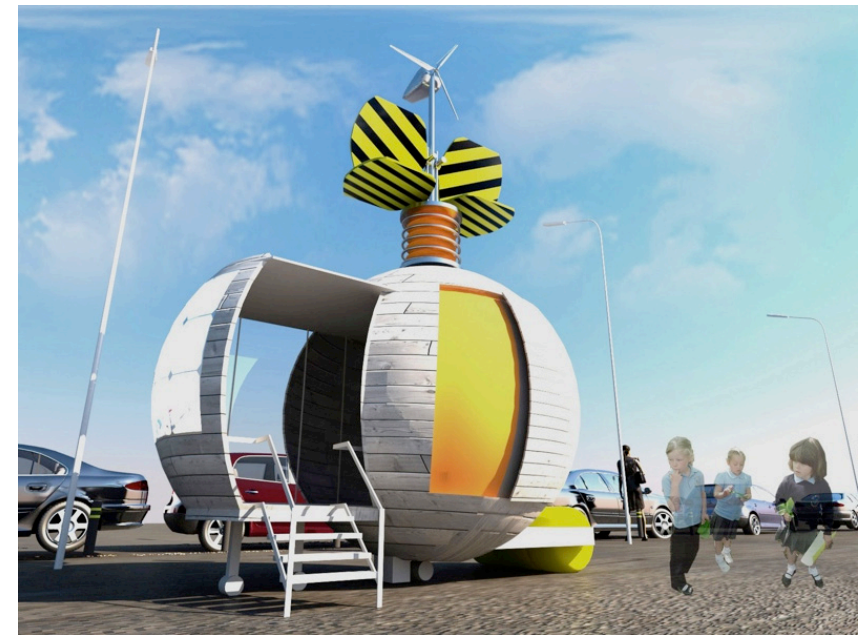
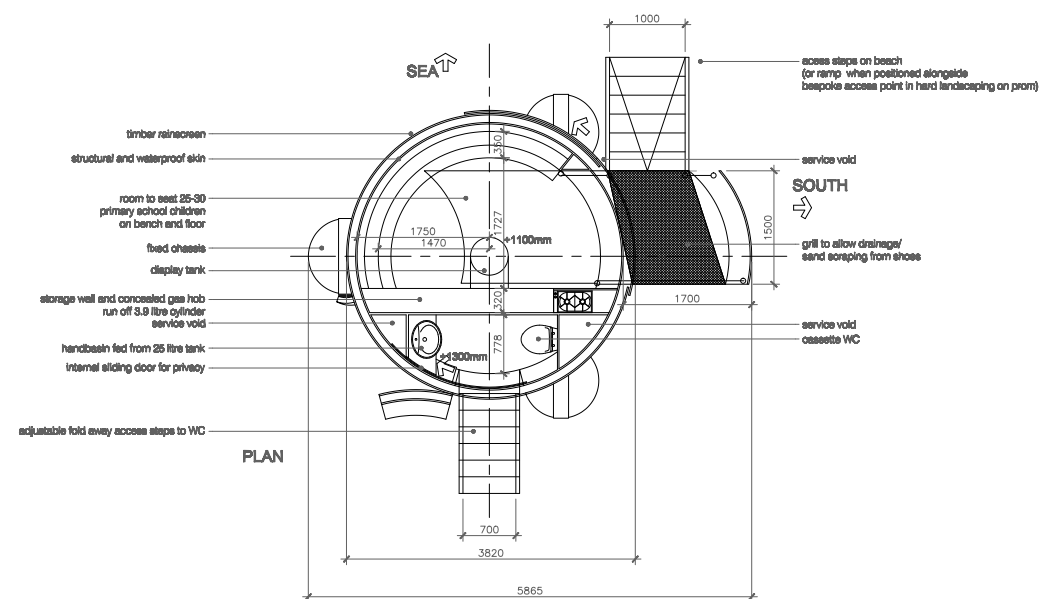
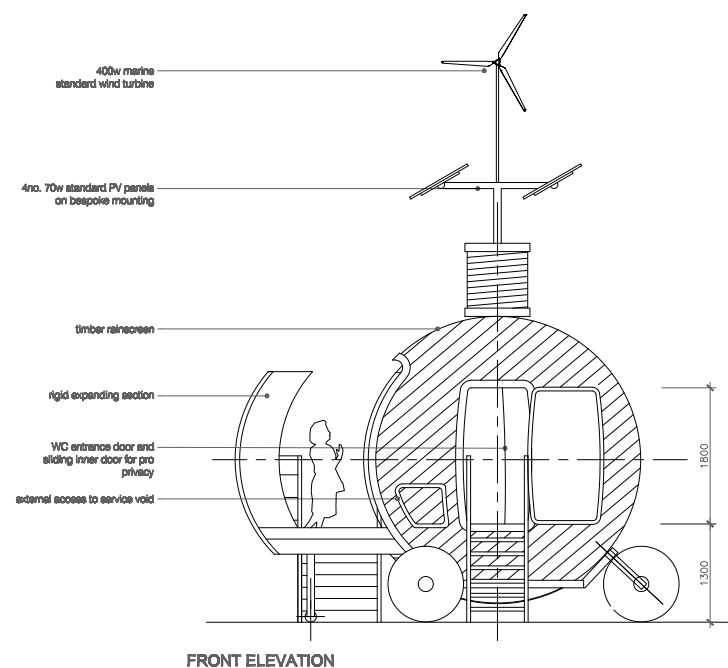
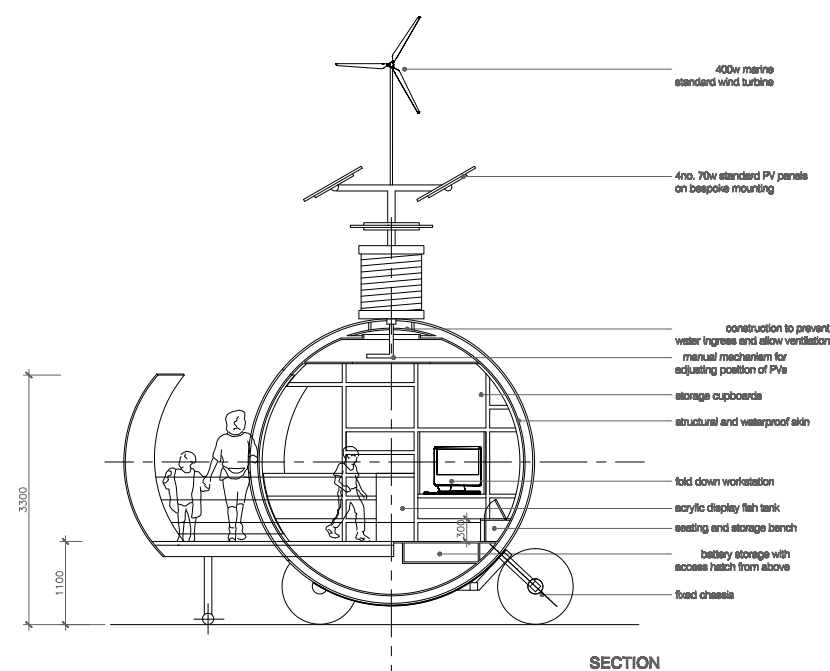
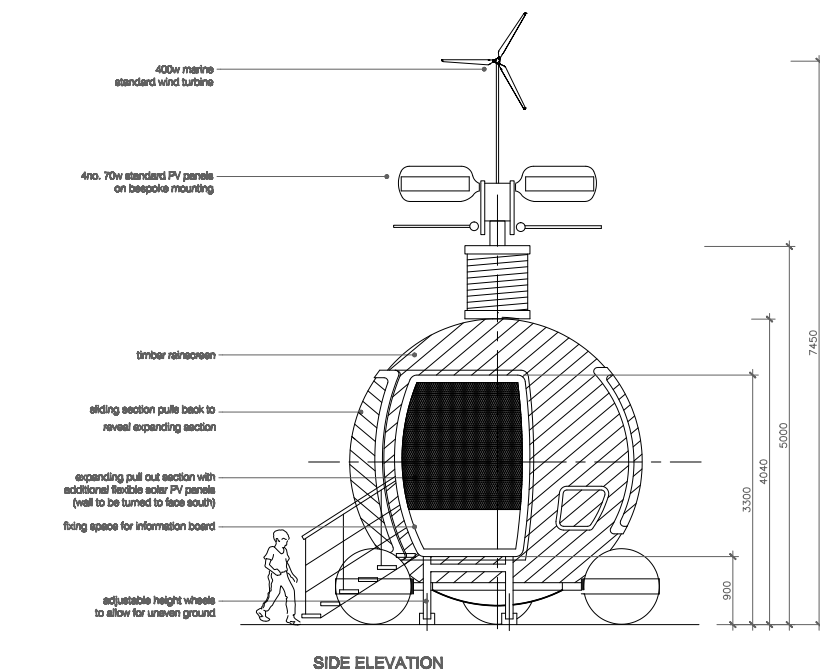


# EDUCATION POD



The Education Pod will be used most intensively during the spring and summer school terms. This pod has the most intense power usage, so has double the number of fixed PVs on the other pods. When in use, extra power is supplied by the flexible PV units fixed to the pull-out expanding section of the pod.

The image above shows the interior of the education pod.

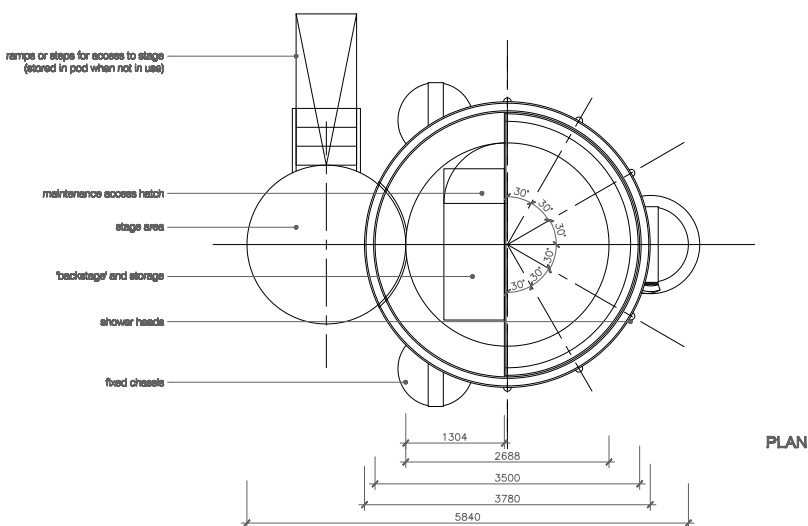
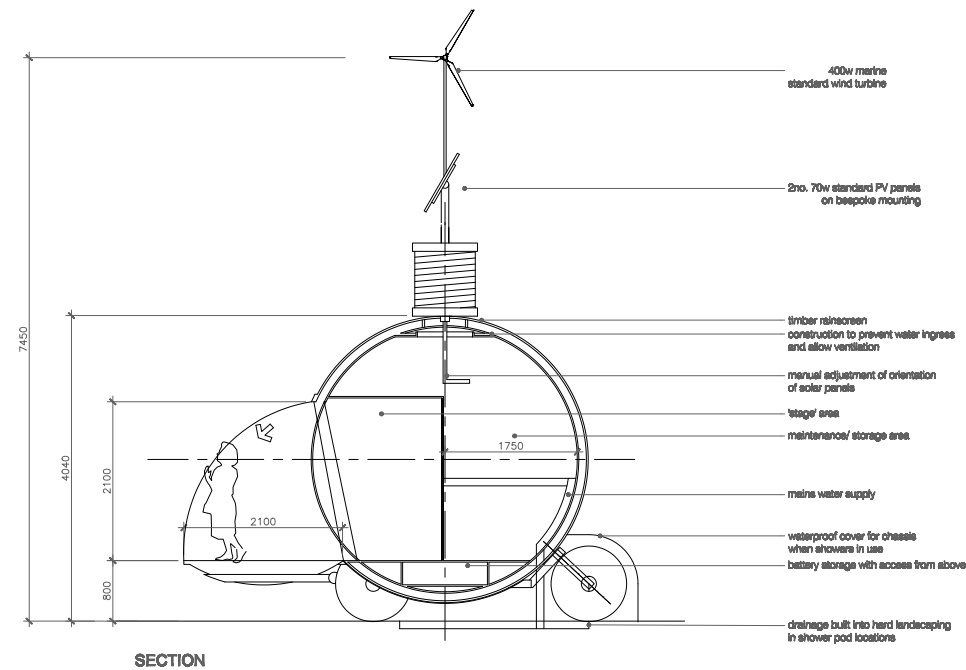
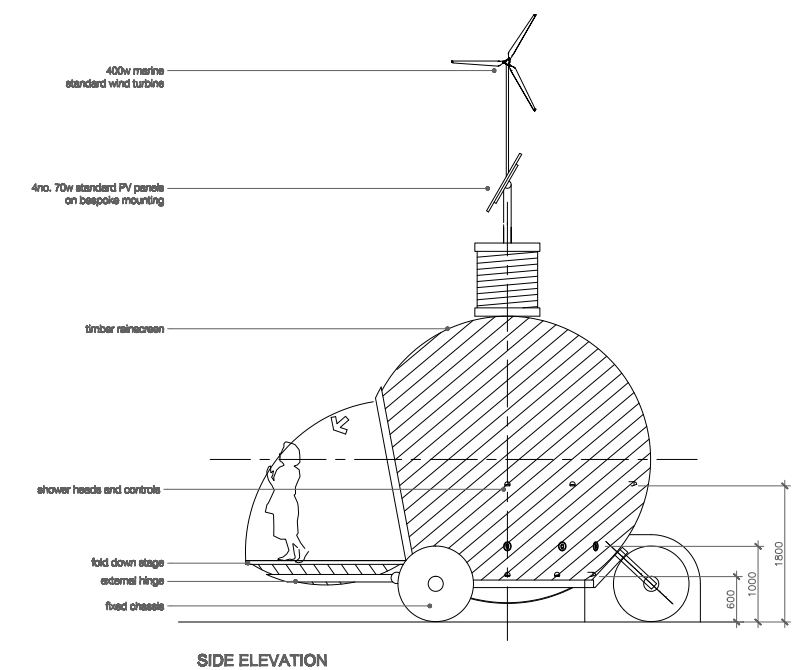
The top image, showing an external view of the pod, was developed during the design development process.

See separate PDFs of drawings at full scale - 1:50@A2

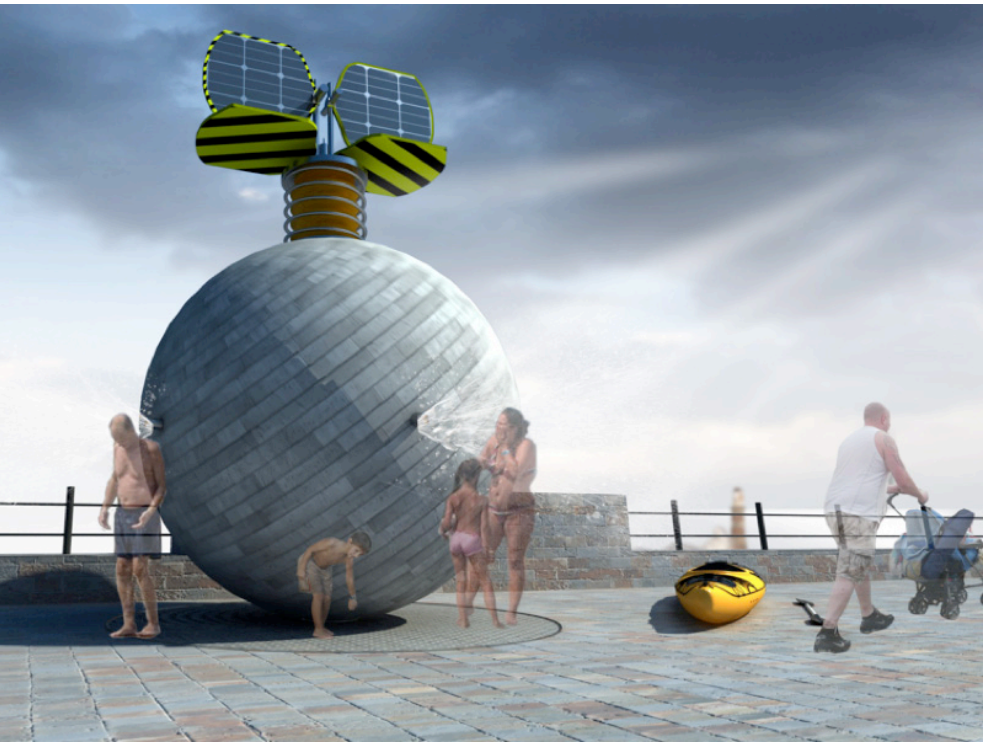
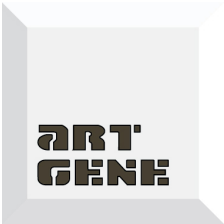




# SHOWER AND PERFORMANCE POD



See separate PDFs of drawings at full scale - 1:50@A2

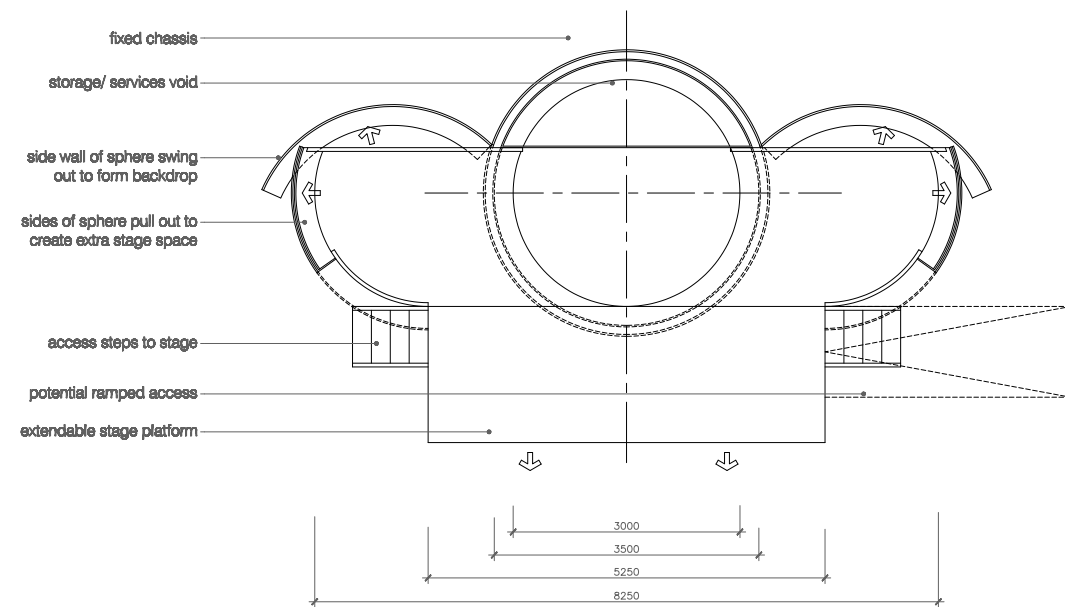
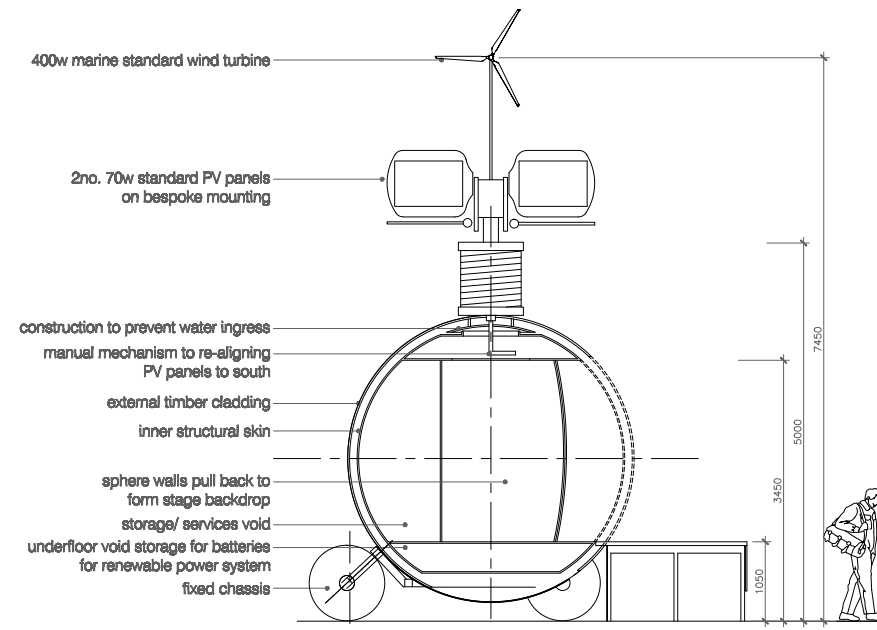
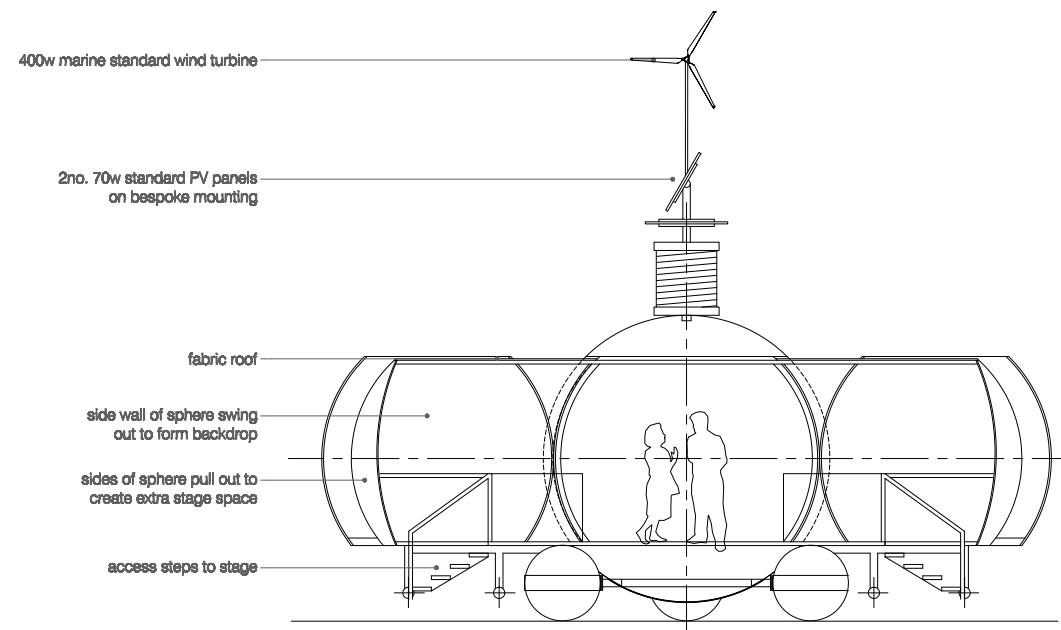


This pod combines two separate functions. The front half folds down to create a raised stage area. The rear half connects to the mains water supply to provide beach-side showering facilities. When the performance space is in use, the shower facilities should be shut off to prevent damage to amps and other sensitive equipment.

The images above show Roker at the turn of the century, with an event taking place in one of the proposed performance locations top.



## PERFORMANCE POD



See separate PDFs of drawings at full scale -  
1:50@A2

The performance pod folds out from a 3.5m sphere to form a larger stage area, suitable for small performances. The front of the stage is flat, rather than curved, to allow for expansion using standard stage systems.

