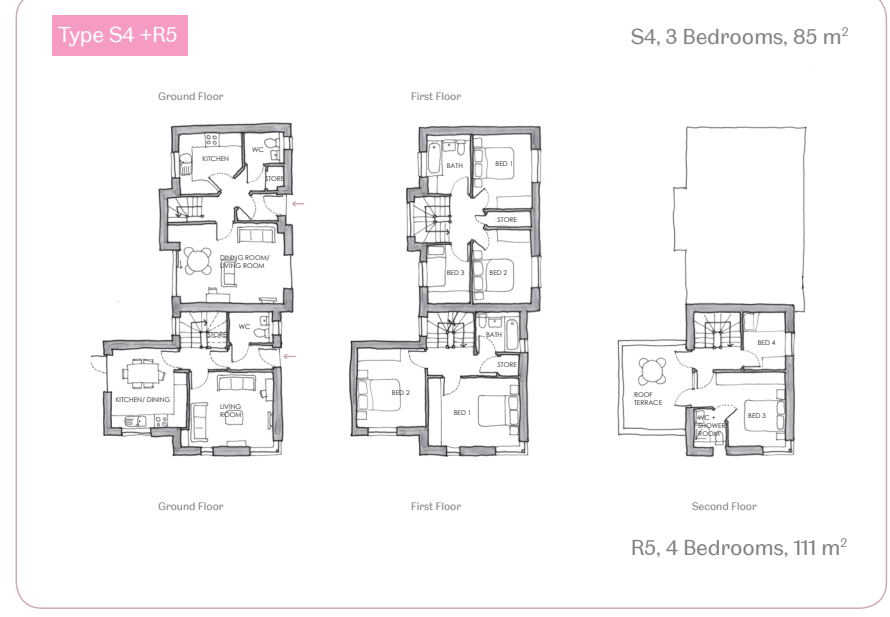
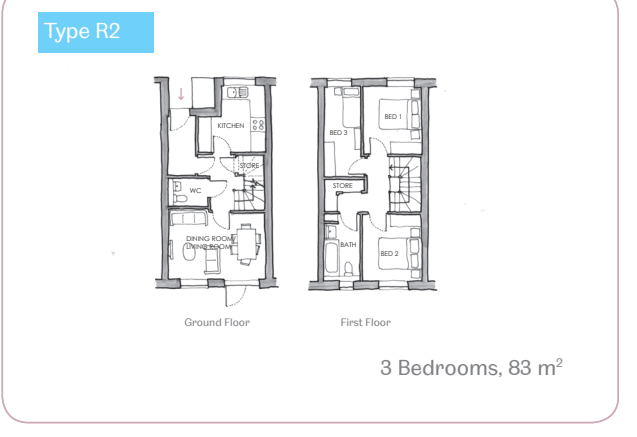
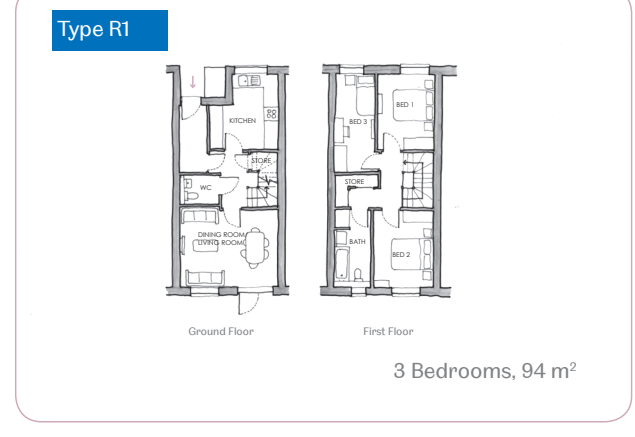
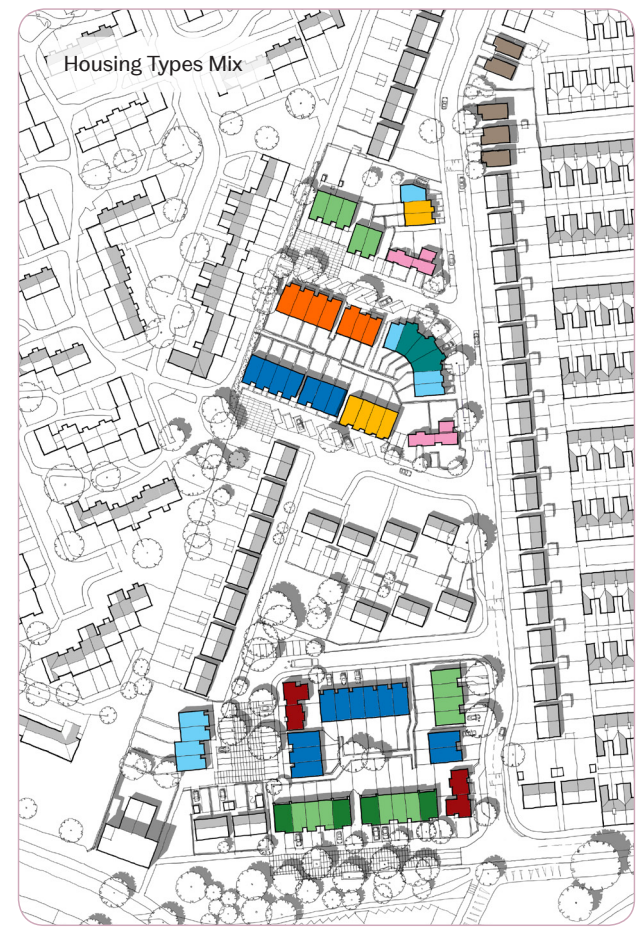
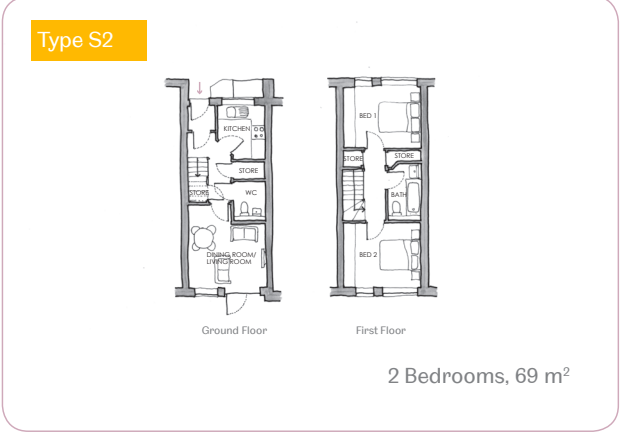
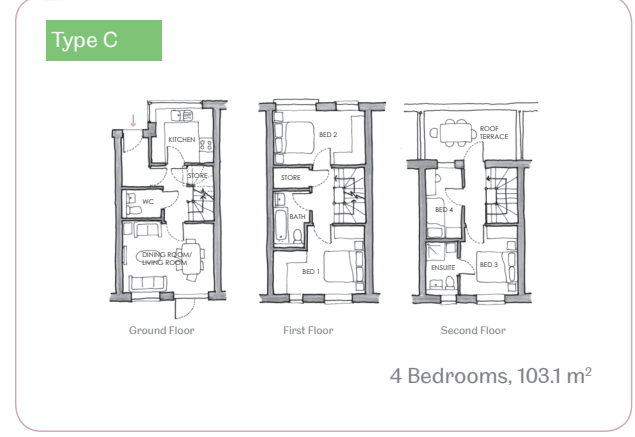
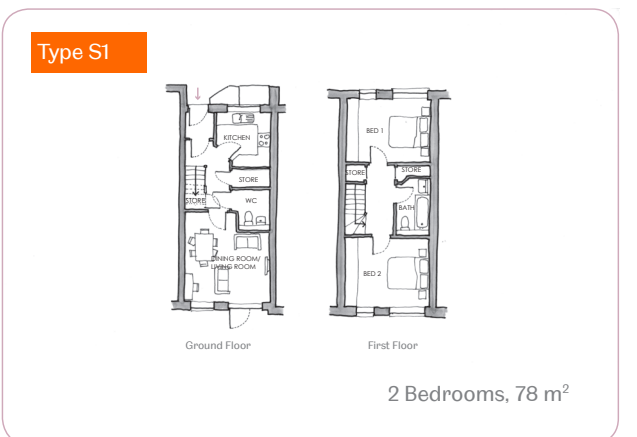
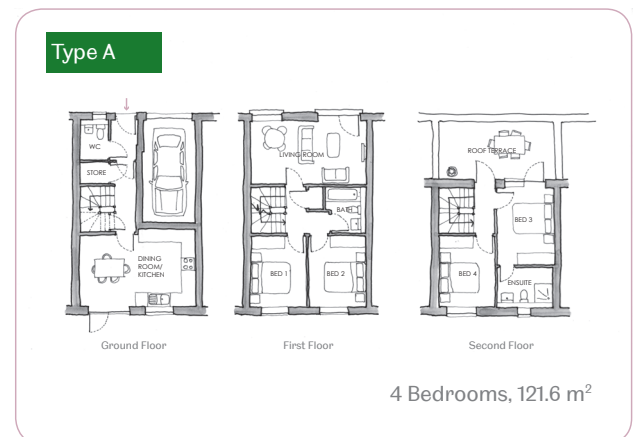
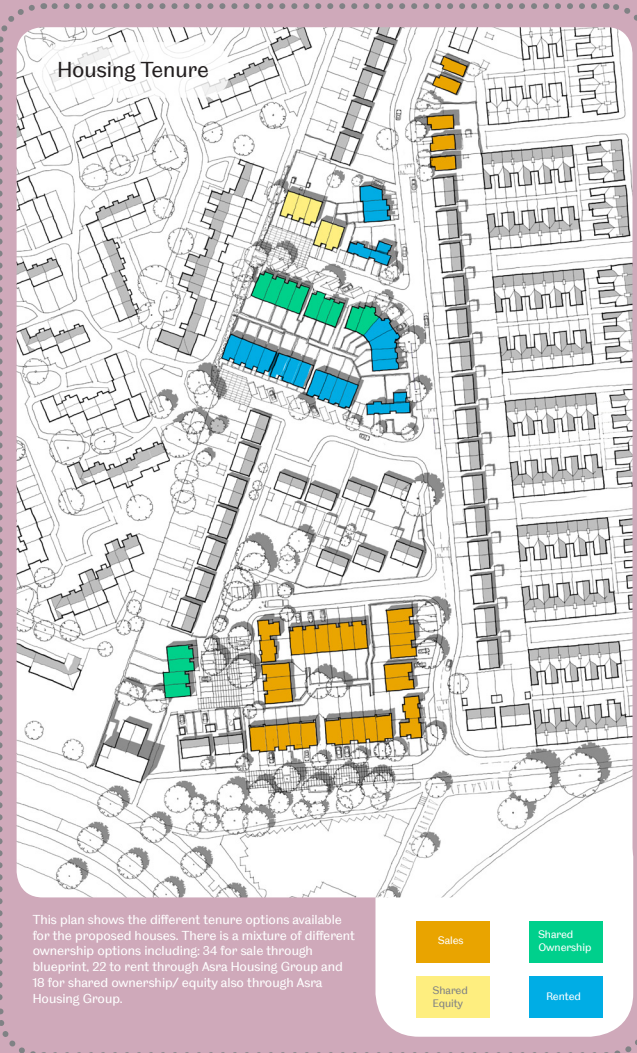




The proposals for the sites at the Meadows, presented in November 2012, were generally well received by the residents and the local community. In recent months, the design team have been developing and updating the proposals. The proposed scheme is a residential development of 74 new homes. The designs are explained in this short exhibition. Please ask us any questions you may have!



ANY SUGGESTIONS

The River Meadows

Wilford Embankment

Southfield View

Riverside Views