

# The Future Plan



FOR OLD TRAFFORD

## Where do you live?



Earlier on this year URBED, an urban design practice, were commissioned by Trafford Housing Trust, Trafford Council and Old Trafford Neighbourhood Management Board to prepare a masterplan for the area of Old Trafford within the red line boundary. The aim of the masterplan is to put in place a physical framework for the area of Old Trafford which will help to improve the neighbourhood. This will run along side plans by Trafford Housing Trust to bring all housing stock to a decent standard by 2010.

The aim of the masterplan is to:

- Promote Old Trafford as a place where people love to live, grow, play and prosper
- Improve housing layouts
- Improve public spaces to make them more attractive and safer
- Promote access to employment, education and community based services
- Promote environmental and social sustainability
- Improve linkages to the surrounding areas

## What has happened so far ?

The following boards display the progress on the design options for the future of Old Trafford based on previous consultation with the community. Once these options are assessed in terms of their viability and community consultation feedback from these events, a final Masterplan and Regeneration Framework will be developed.

This will guide the development of the area over the next 10-15 years. We would like your views on these options.

## COMPLETE A QUESTIONNAIRE AND LET US KNOW YOUR VIEWS !!





# Community Input



## OLD TRAFFORD MASTERPLAN

### How have we consulted residents so far?



#### Round Table Workshop - 30th June 2008

To give everyone the opportunity to shape the strategy we invited key stakeholders to a Round Table workshop in June. The event was attended by local people together with people from Trafford Council, Housing organisations, children and youth services, police, highways, environmental services, health care, leisure services and local businesses. They developed a vision and put forward ideas for the future improvements of Old Trafford.

#### Bus Tour

Residents have been sight seeing on a bus tour of Salford and Manchester to see how other communities have brought about positive changes to their area. Local residents saw examples of good quality houses and flats, parks, home zones, community facilities and retail space.



Broughton Green, Salford



New Islington, Beswick



Rochdale Road



Beswick



Chimney Pot Park, Langworthy



Plymouth Grove, Longsight



Northmoor Home Zone



Zion Community Centre, Hulme

#### Design Charettes

Local residents then participated in a series of Community Design Workshops and produced models to show how their neighbourhood could be improved. We divided the Old Trafford Neighbourhood into three parts, the North, Central and East so that each community could focus on improving their area while contributing to the overall masterplan.



#### Youth Consultation

Parallel to the design sessions, we ran an art project allowing youngsters from the 3 areas to get involved. This included a 'Possibilities Slide Show' exercise where they choose their favourite urban areas from hundreds of photographs. Young people also created a 'Faces of Old Trafford' mural along with expressions of how they felt about their neighbourhood.





# Vision for the Future

## OLD TRAFFORD MASTERPLAN



## What makes a sustainable

Sustainable communities meet the diverse needs of existing and future residents, their children and other users, contribute to high quality of life and provide opportunity and choice. They achieve this in ways that make effective use of natural resources, enhance the environment, promote social cohesion and inclusion, and strengthen economic prosperity.

Source: *The Egan Review*  
Skills for sustainable communities 2004



## Developing the Vision

Thank you to everyone who came and help develop the vision for Old Trafford. By participating we have had the opportunity to exchange ideas and give all the key stakeholders an understanding of the aspirations of the local community. From the consultation the following key aspirations have emerged:

### Old Trafford is a place where there will be.....

- A full range of services accessible locally
- Good transport links
- Facilities for all ages
- Well maintained green spaces
- Community facilities
- Decent homes for all
- Choice of tenure suited to the needs of the community
- Training, Employment, business opportunities for all
- Economic prosperity for the community



## Why are your views important?

Your views are important because the most valuable asset to any community is its people. Strong communities develop when people stay in an area for a long time, where people are proud of where they live and where people are positive and are good neighbours. The masterplan will contribute to a Sustainable Old Trafford by guiding decisions on the future of:

- Housing and the Built Environment
- Transport and connectivity
- Environment

These elements of the masterplan will help to promote better access to community facilities such as health centres, training and employment facilities and leisure facilities.

This will help to promote a stronger Old Trafford.

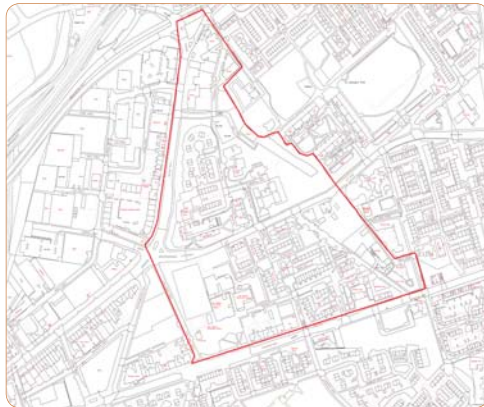




# Old Trafford North



## OLD TRAFFORD MASTERPLAN



Old Trafford North includes Hullard and Rivers Estates



Historical Plan



Road Hierarchy Plan



Open Space Plan



Land Use Plan

Old Trafford North includes Rivers Estate, Cornbrook Park, Hullard Estate, City Road and the northern side of Stretford Road. The historical plan shows how the area was well connected to the surrounding areas in the 1800's.

## Developing the options for Old Trafford North



Local residents looked at plans of the area, and developed models to show ideas for how some of the issues raised could be addressed by improvements to the layout of the estates. These models have been developed into three options for Old Trafford North shown next.

### Youth comments:

"It would be so nice to have a cinema close by" Jenna Hughes, 12yrs

"We want a clean area with astroturf like the one at West Union St Community School", Tony Robinson, 15yrs

Models developed during the Design Charettes with residents



### Please use the post it notes to add comments.

The following concerns were raised by residents from the North of the area:

#### Hullard

- Only 1 shop (Happy Shopper) for a large area
- Malvern Row used to be a row of shops with launderette. The launderette has now closed and the Happy Shopper is expensive. No-where for local residents to access laundry facilities.
- There are very few shopping and leisure facilities within walking distance. Cornbrook Station is underutilised.
- Area does not link to the Cornbrook and Pomona areas and is cut off from Manchester City Centre despite being so near.

#### Trafford And Rylands Court

- Bin Stores and Porches are vandalised.
- Not a safe place.
- Residents scared to empty bins.
- People urinate and take drugs at the entrances to blocks.
- Poorly lit.
- Disposal of large items such as mattresses are left on the estate.
- Dogs faeces can be seen in corridors and on grassed areas.
- Lucy street is deserted.
- Feels cut off and distant from amenities.
- Doors often wedged open as people do not have key fobs.
- Size of windows has been reduced and grassed areas now fenced off and this makes the area feel like a prison.

#### Rivers

- Estate is generally poorly laid out with backs of properties facing onto Stretford Road.
- You can often see watching hanging out from Stretford Road as there is no privacy for gardens due to the confused layout.
- Public Realm works done by Groundwork are superficial and more needs to be done to improve layout.
- Children do not make too much noise and are not an issue.
- They need amenities which will allow them to keep active.
- Old Trafford Community School has a kick pitch however children are not allowed to use this as the pitch is condemned.



# Old Trafford North



## OLD TRAFFORD MASTERPLAN

### Option 1 for Old Trafford North

Key gateways and links to Pomona, Cornbrook, the Irwell City Park, Media City, and Manchester to be promoted.

#### Option 1 - Minimal change

##### Demolitions

- City Road Old Peoples Home (Cornbrook Court) and replaced with a mixed use block with retail/mixed uses at ground floor.

##### Refurbished

- Empress Court, Princess Court, Trafford Court, Rylands Court to meet Trafford Standard for decent homes.

##### Newbuild

- Corner City Road and Malvern Street
- New Development on the vacant site in front of Old Trafford Community School on City Road.

##### Open Space

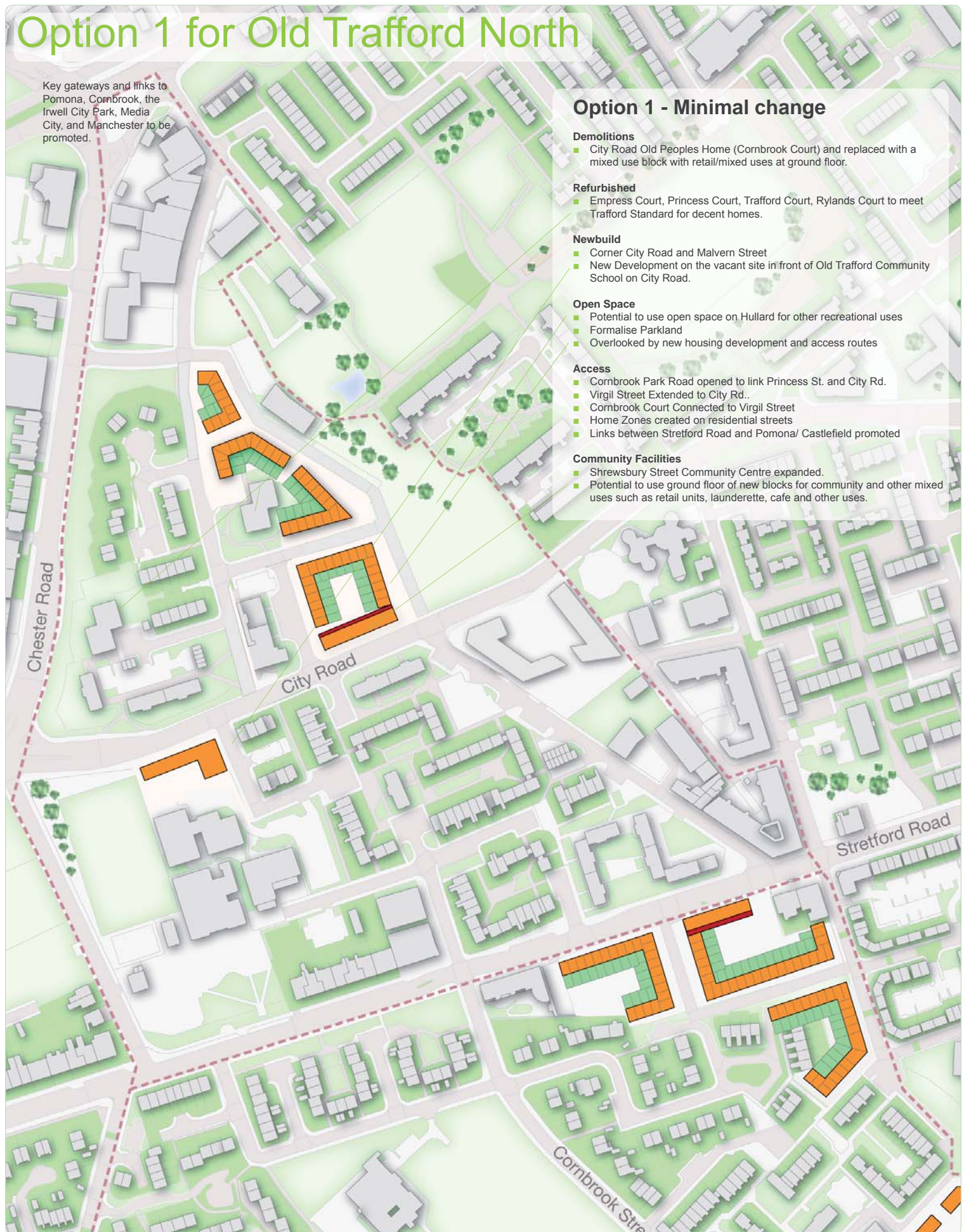
- Potential to use open space on Hullard for other recreational uses
- Formalise Parkland
- Overlooked by new housing development and access routes

##### Access

- Cornbrook Park Road opened to link Princess St. and City Rd.
- Virgil Street Extended to City Rd..
- Cornbrook Court Connected to Virgil Street
- Home Zones created on residential streets
- Links between Stretford Road and Pomona/ Castlefield promoted

##### Community Facilities

- Shrewsbury Street Community Centre expanded.
- Potential to use ground floor of new blocks for community and other mixed uses such as retail units, launderette, cafe and other uses.





# Old Trafford North



## OLD TRAFFORD MASTERPLAN

### Option 2 for Old Trafford North

Key gateways and links to Pomona, Cornbrook, the Irwell City Park, Media City, and Manchester to be promoted.

#### Option 2 - Medium change

##### Demolition

- Cornbrook Court, Malvern Row, Trafford Court, Rylands Court

##### Refurbished

- Empress Court, Princess Court and all remaining homes to meet Trafford Standard for decent homes

##### New Build

- New residential development on Chester Road
- New residential development on the corner of Chester Road and City Road.
- New Development on the vacant site in front of Old Trafford Community School on City Road.
- Residential infill development on Hullard
- Trafford and Rylands Court replaced with new flats on corner of Lucy Street and Stretford road
- Redeveloped as perimeter block of flats with secure internal courtyard

##### Open Space Improvements

- Potential to use open space on Hullard for other recreation uses
- Formalise Parkland
- Overlooked by new housing development
- Open space reduced and overlooked by new development and access routes connecting
- Improved links to St. George's Park

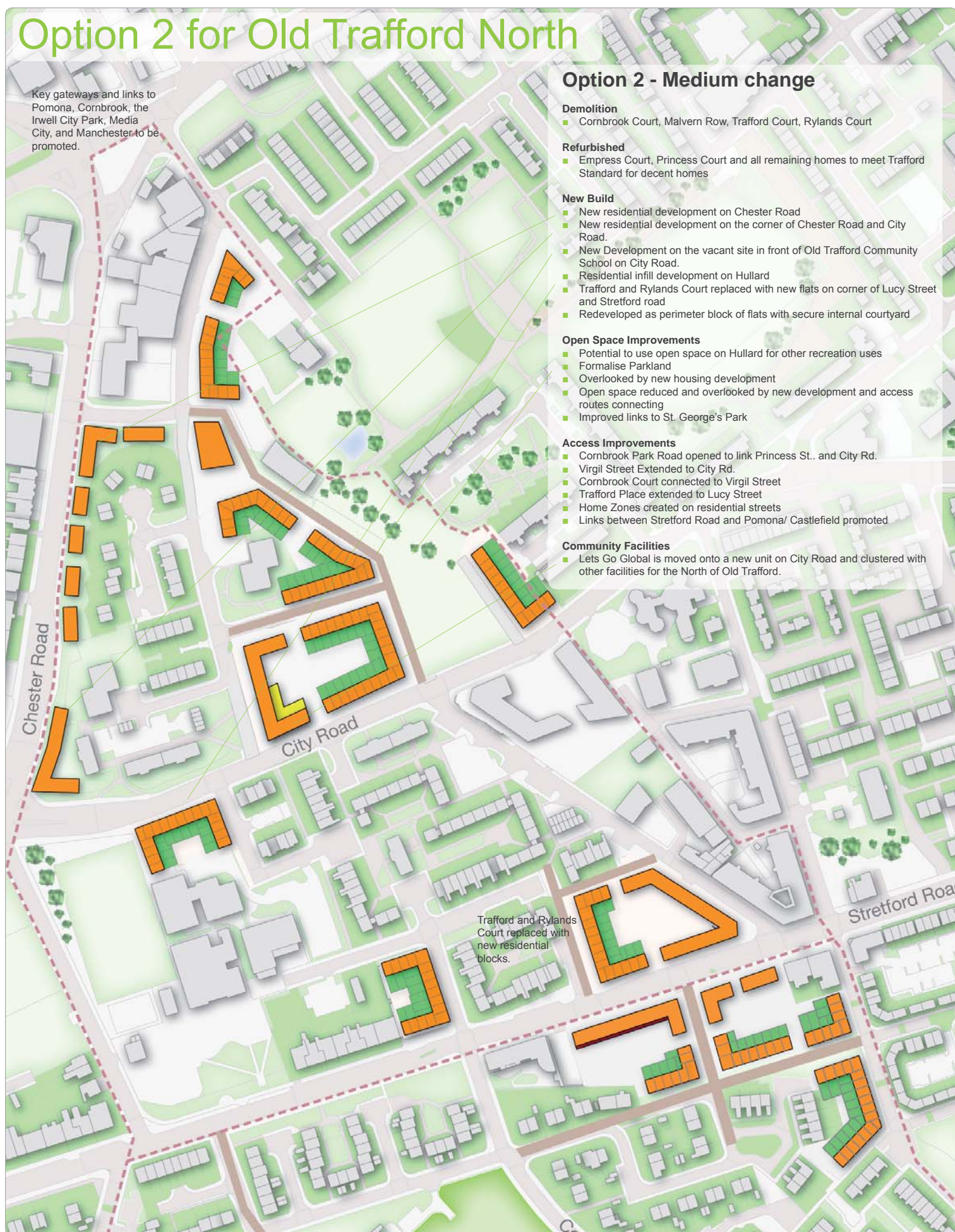
##### Access Improvements

- Cornbrook Park Road opened to link Princess St.. and City Rd.
- Virgil Street Extended to City Rd.
- Cornbrook Court connected to Virgil Street
- Trafford Place extended to Lucy Street
- Home Zones created on residential streets
- Links between Stretford Road and Pomona/ Castlefield promoted

##### Community Facilities

- Lets Go Global is moved onto a new unit on City Road and clustered with other facilities for the North of Old Trafford.

Trafford and Rylands Court replaced with new residential blocks.





# Old Trafford North



## OLD TRAFFORD MASTERPLAN

### Option 3 for Old Trafford North

Key gateways and links to Pomona, Cornbrook, the Irwell City Park, Media City, and Manchester to be promoted.

#### Option 3 - Radical Change

##### Demolition

- Empress Court, Princess Court, Trafford Court, Rylands Court, Cornbrook Court, Malvern Row, Garages on Rivers Estate

##### Refurbished

- All remaining stock to meet Trafford Standard
- De-Radburning of Rivers and reintroduce streets and internal courtyards

##### New Build

- Industrial units/workshops between Chester Road and Virgil Street replaced with apartments with mixed uses such as business and retail at ground floor to improve the gateway into Old Trafford.
- New residential development on Chester Road
- New residential development on the corner of Chester Road and City Road.
- New Development on the vacant site in front of Old Trafford Community School on City Road.
- Tower blocks replaced with lower rise housing
- Trafford and Rylands Court replaced with new flats on corner of Lucy Street and Stretford road
- Redeveloped as perimeter block of flats with secure internal courtyard

##### Open Space Improvements

- This option has the most development on the open space and therefore reduces amount of open space

##### Access Improvements

- Cornbrook Park Road opened to link Princess St. and City Rd.
- Virgil Street Extended to City Rd.
- Cornbrook Court Connected to Virgil Street
- Rivers Estate reconnected to allow access between City Road and Stretford Rd.
- Trafford Place extended to Lucy Street
- Home Zones created on residential streets

##### Community Facilities

- Fahey's Site on Chorlton Road is developed as a community Hub for Old Trafford.

Trafford and Rylands Court replaced with new residential blocks.

Fahey's Site to be developed as a mixed use site with community hub.

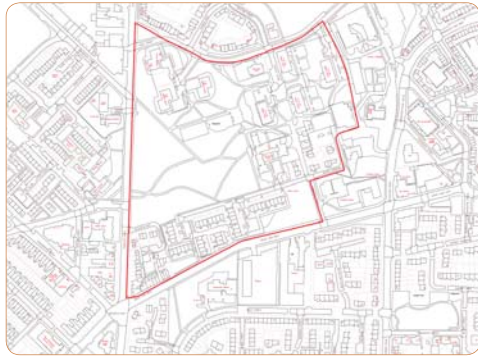




# Old Trafford East



## OLD TRAFFORD MASTERPLAN



Old Trafford East



Historical Plan



Open Space Plan



Road Hierarchy Plan



Land Use Plan

Old Trafford East includes Tamworth (Seven Sisters) Estate, Maher Gardens, Moss Lane West and Chorlton Road. The area was once a dense residential area of terraced housing with many streets.

## Developing the options for Old Trafford East



Local residents looked at plans of the area, and developed models to show ideas for how some of the issues raised could be addressed by improvements to the layout of the estate. These models have been developed into three options for Old Trafford East shown next.

### Youth comments:

"They asked us about what we would like here and we didn't ask for a baby play area, we wanted a football pitch but they didn't listen to us." Ronnie Moore, 15yrs

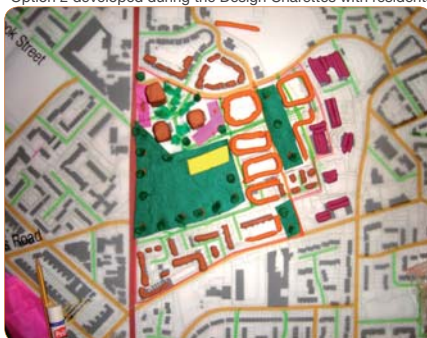
"The Seven Sister's lifts are disgusting ... too many drugs and it smells." Shean Ince, 15yrs



Option 1 developed during the Design Charettes with residents



Option 2 developed during the Design Charettes with residents



**Discussions with the residents raised the following comments;** (Please add comments to your form or use the post it notes).

- Bird Blocks are unpopular as a choice of housing due to the lack of personal outdoor space (lack of Balconies) and the poor quality public space within the blocks
- Ground floors are like a maze of spaces with no clear circulation or sight lines to the lifts. The white tiling makes the spaces feel like a mortuary or operating theatre
- Problems with rats and cockroaches
- There is no where to do laundry so residents have fitted washing machines into flats. The pipes are not able to carry the waste from machines and this has led to high incidents of flooding in the tower blocks
- Safety and security is a major issue. There are many taxi drivers and shift workers whom enter and exit the blocks at night and in the early hrs. of the morning and they do not feel safe.
- Drug users are a major problem as well as the negativity that follows them. Drug users do not dispose of needles properly and these are often found in the stairwell.
- There is only one shop and one pub left in the area. The shop is in an isolated area as there is no activity around it and is not safe to use when it is dark.
- The Lighting is in the trees.
- Many areas are not well lit
- Apart from the Sea Hawk there is nowhere else indoors to socialise.
- MUGA very popular but there are many teenagers and young adult with nowhere to hang out or get involved in mental and physical activity when it is raining which is most of the time.
- Too many areas of railing which is confusing.
- Route to the bus stops feels unsafe.
- Sceptical about how their input will make any difference.
- Concerns that if the blocks are demolished that single people will not be rehoused.
- Concerned about the cost of new accommodation in relation to current rents.
- Do not want Bellway blocks of flats.
- Concerns about drug users being housed in the blocks.



# Old Trafford East



## OLD TRAFFORD MASTERPLAN

### Option 1 for Old Trafford East

#### Option 1 - Minimal change

##### Demolitions

- Tamworth court (relocate CCTV to base of blocks or other location)
- Trafalgar Walk

##### Refurbished

- Eagle Court, Falcon Court, Osprey Court, Raven Court, Clifford Court, Grafton Court, Pickford Court

##### Newbuild

- Corner Maher Gardens and Chorlton Rd.
- Tamworth Court
- Trafalgar Walk
- Bold Street/Osprey Close
- Moss Lane West

##### Open Space

- Loss of Open Space on Maher Gardens and park leveled to improve views and vistas

##### Access

- Augustus Way and Maher Gardens connected and extended through to Bold Street
- Dudley Close extended to Tamworth Street
- New access through Park terminating at Osprey Court
- Parking provided on the street and formalised bays provided at the base of blocks

##### Community Facilities

- Shrewsbury Street Community Centre expanded and a smaller facility is developed on Fahey's Site.
- Potential to use ground floor of blocks for community and other mixed uses such as retail units, launderette, cafe and other uses.





# Old Trafford East



## OLD TRAFFORD MASTERPLAN

### Option 2 for Old Trafford East

#### Option 2 - Medium change

##### Demolition

- Eagle Court, Falcon Court, Osprey Court, Raven Court, Tamworth court, (relocate CCTV to base of blocks or other location) Trafalgar Walk, Sea Hawk Pub

##### Refurbished

- Clifford Court, Grafton Court, Pickford Court

##### New Build

- Series of 8 residential blocks to replace the bird blocks
- Infill development on Moss Lane East/Tamworth Street
- New retail units overlooking park to replace Trafalgar Walk

##### Open Space Improvements

- No loss of open space and amenity space between blocks is leveled and improved as parkland
- Seating area introduced for tenants

##### Access Improvements

- Augustus Way and Maher Gardens connected and extended through to Bold Street
- Dudley Close extended to Tamworth Street
- New access through Park terminating at Dudley Close
- Parking provided on the street and formalised bays provided at the base of blocks on Chorlton Rd and off Bold St
- Osprey Close becomes formal road

##### Community Facilities

- A community facility is developed on Tamworth as a ground floor use with residential uses above.

New community use developed on the Fahey Site corner.

Residents parking improved.

Maher Gardens is flattened and turned into a formal park like the Hulme Park.

Community uses could be incorporated into ground floor uses of residential blocks overlooking the park.

New shops developed on ground floor with flats above.

New streets introduced linking to Hulme and Moss Lane West.

Moss Lane West

Chichester Road

Chorlton Road





# Old Trafford East



## OLD TRAFFORD MASTERPLAN

### Option 3 for Old Trafford East

#### Option 3 - Radical Change

##### Demolition

- Eagle Court, Falcon Court, Osprey Court, Raven Court, Clifford Court, Grafton Court, Pickford Court, Sea Hawk Pub, Tamworth court (relocate CCTV to base of blocks or other location), Trafalgar Walk

##### New Build

- Series of 11 residential blocks to replace the bird & balcony blocks blocks
- Moss Lane West

##### Open Space Improvements

- Minimal loss of open space and park is leveled and improved
- Internal courtyards space in blocks
- Access through park improved

##### Access Improvements

- Augustus Way and Maher Gardens connected and extended through to Bold Street
- Dudley Close extended to Tamworth Street and becomes Secondary Street connecting through Hulme
- New access through Park terminating at Dudley Close
- Parking provided on the street and formalised bays provided at the base of blocks on Chorlton Rd and off Bold St
- Osprey Close becomes formal road

##### Community Facilities

- Fahey's Site is developed as a large community Hub for Old Trafford with community and business uses.

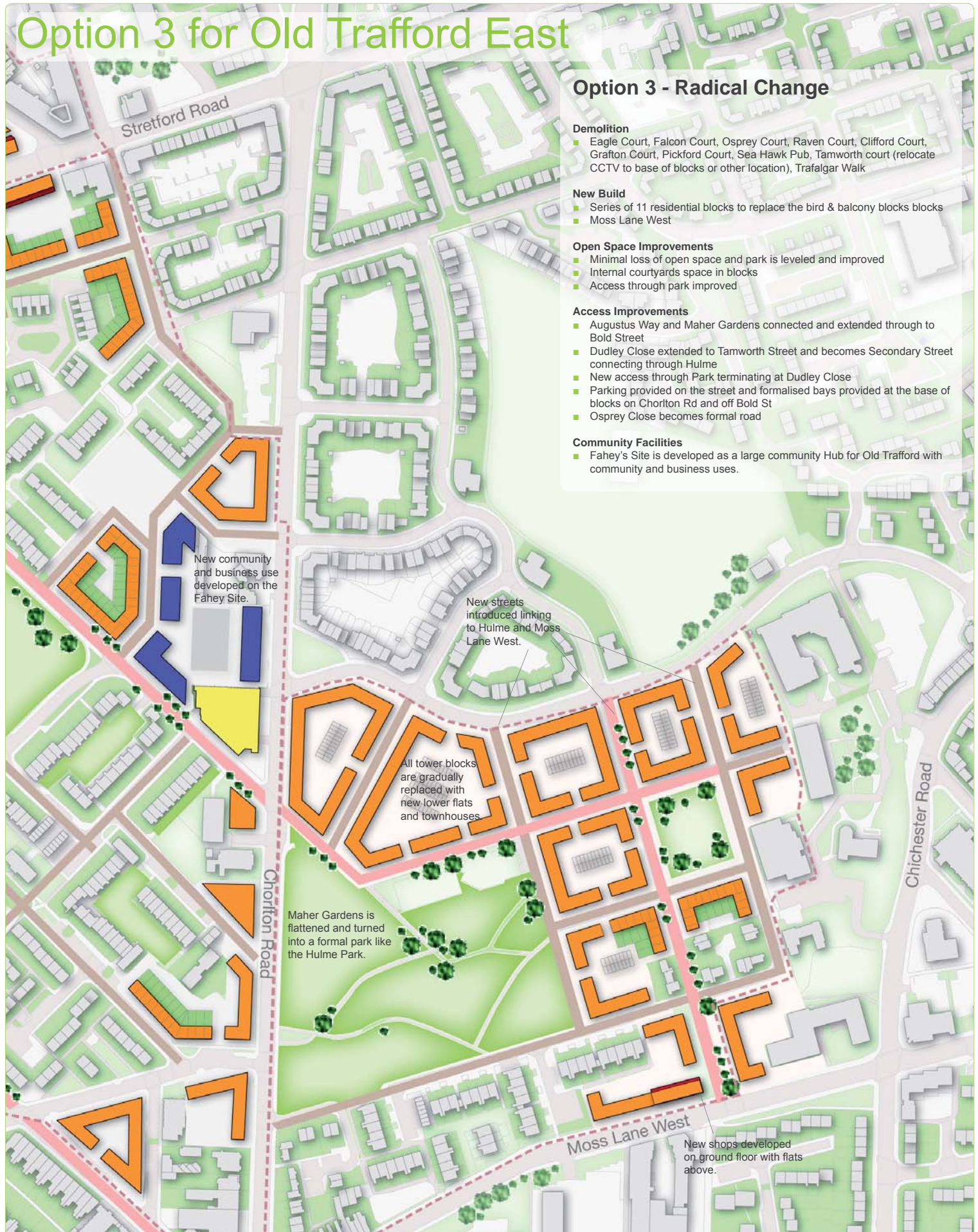
New community and business use developed on the Fahey Site.

New streets introduced linking to Hulme and Moss Lane West.

All tower blocks are gradually replaced with new lower flats and townhouses

Maher Gardens is flattened and turned into a formal park like the Hulme Park.

New shops developed on ground floor with flats above.





# Old Trafford Central

## OLD TRAFFORD MASTERPLAN



Old Trafford Central



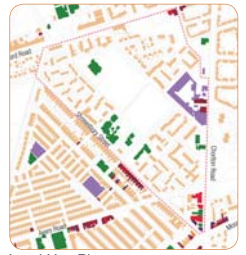
Historical Plan



Open Space Plan



Road Hierarchy Plan



Land Use Plan

Old Trafford Central is the area between Stretford Road and Upper Chorlton Road including Hamilton Grove, Cornbrook Grove, School Walk, the Cliftons and the terraced area of housing between Shrewsbury Street and Prestage Street. This area would benefit from environmental improvements to roads and open space and infill housing on vacant sites.

## Developing the options for Old Trafford Central



Local residents looked at plans of the area, and developed models to show ideas for how some of the issues raised could be addressed by improvements to the layout of the estate. These models have been developed into three options for Old Trafford Central shown next.

### Youth comment:

"We have a lovely house but the graffiti isn't nice at all ..." Linko and Vanish Mackova, 11yrs, 13yrs



Option 1 developed during the Design Charettes with residents



Option 2 developed during the Design Charettes with residents



**Discussions with the residents raised the following comments;** (Please add comments to your form or use the post it notes).

Overall people love living in Old Trafford but there are a few concerns residents have which could be addressed by the masterplan.

- The mosque needs more parking, at present it is causing traffic congestion.
- Hullard Park is seen by residents to be a great asset.
- Isabella Lodge- Residents unsure what should be done, however feel it should be priority.
- Some felt the community centre worked well in its present location, additionally it was felt the centre was not run enough by the community.
- Re-open streets that have been closed down in the past, movement is controlled and access to some areas is confusing.
- Ayres Road- Possibility to make it a one way street. Traffic is a major problem at the moment, with lack of parking and the noise and speed of traffic on the road. A car park was suggested and separate parking for residents and shoppers.
- Roads are used as play spaces at the moment.
- Harwood Drive area is a rat-run.

### Shrewsbury/ Stamford

- Community centre entrance should be re-designed – the play area is not used, this space could better serve the community if replaced with benches for the elderly.
- The entrances need to be made more welcoming; at present it is hard to see if the centre is actually open.
- Housing above shops on Ayres road is poor quality.

### Green Space

- Under used at present, with only a sporting use. Could some space be made into a park?
- Mixed responses for fencing in the middle of the park.
- Possibility for some type of community facility in the green space in Tamworth- changing facilities, flood lights or Pavilion.

### Fahey Site

- Could become small workshop units, craft workshops or youth and enterprise centre.



# Old Trafford Central

## OLD TRAFFORD MASTERPLAN



### Option 1 for Old Trafford Central



#### Option 1 - Minimal change

##### Demolitions

- Farheys Depo
- Car wash site
- Isobel Baillie Lodge

##### Refurbished

- All remaining stock to meet Trafford Standard
- Vacant Church

##### Newbuild

- Essex Way/Stretford Rd, Farheys Site, Car wash site, Carriage Street, Isobel Baillie Lodge site, Shrewsbury Street Car Park, Cleared Site on Ayres Rd

##### Open Space

- St Alphonsus School playing ground improved/use by public
- Loss of informal open space at Essex way

##### Access

- Cornbrook Street improved between Stretford Rd and St Brides Way.
- Mosque access and parking improved

##### Community Facilities

- Shrewsbury Street Community Centre expanded and a smaller facility is developed on Fahey's Site.
- Potential to use ground floor of blocks for community and other mixed uses such as retail units, launderette, cafe and other uses.





# Old Trafford Central

## OLD TRAFFORD MASTERPLAN



### Option 2 for Old Trafford Central



#### Option 2 - Medium change

##### Demolition

- Farheys Depo, Car wash site, Ayton House, Isobel Bailey Lodge

##### Refurbished

- De-radburning of the Cliftons, Cornbrook grove and School walk
- Clifton House, Brooks House, Ayton House, Vacant Church

##### New Build

- Essex Way/Stretford rd, Farheys Site, Car wash site, Carriage Street, Isobel Bailey Lodge site, Shrewsbury Street Car Park
- Infil development on Chorlton Road

##### Open Space Improvements

- St Alphonsus School playing ground improved/use by public
- Loss of informal open space at Essex way

##### Access Improvements

- Greendale Drive to Bangor Street reconnected to open up access between Henrietta st and Chorlton rd
- St Brides way opened up to Chorlton Road
- Carriage Street opened up to Chorlton Road
- Clifton Close joined to Clifton Street
- Eton Close extended to join new street off St Brides Way
- Overall home Zone treatment to Shrewsbury Street.
- Mosque access and parking improved

##### Community Facilities

- Shrewsbury Street Community Centre and Fahays developed as smaller community hubs.
- Other facilities are developed for Old Trafford North (Hullard and Rivers) and Old Trafford East (Tamworth/ Seven Sisters area)



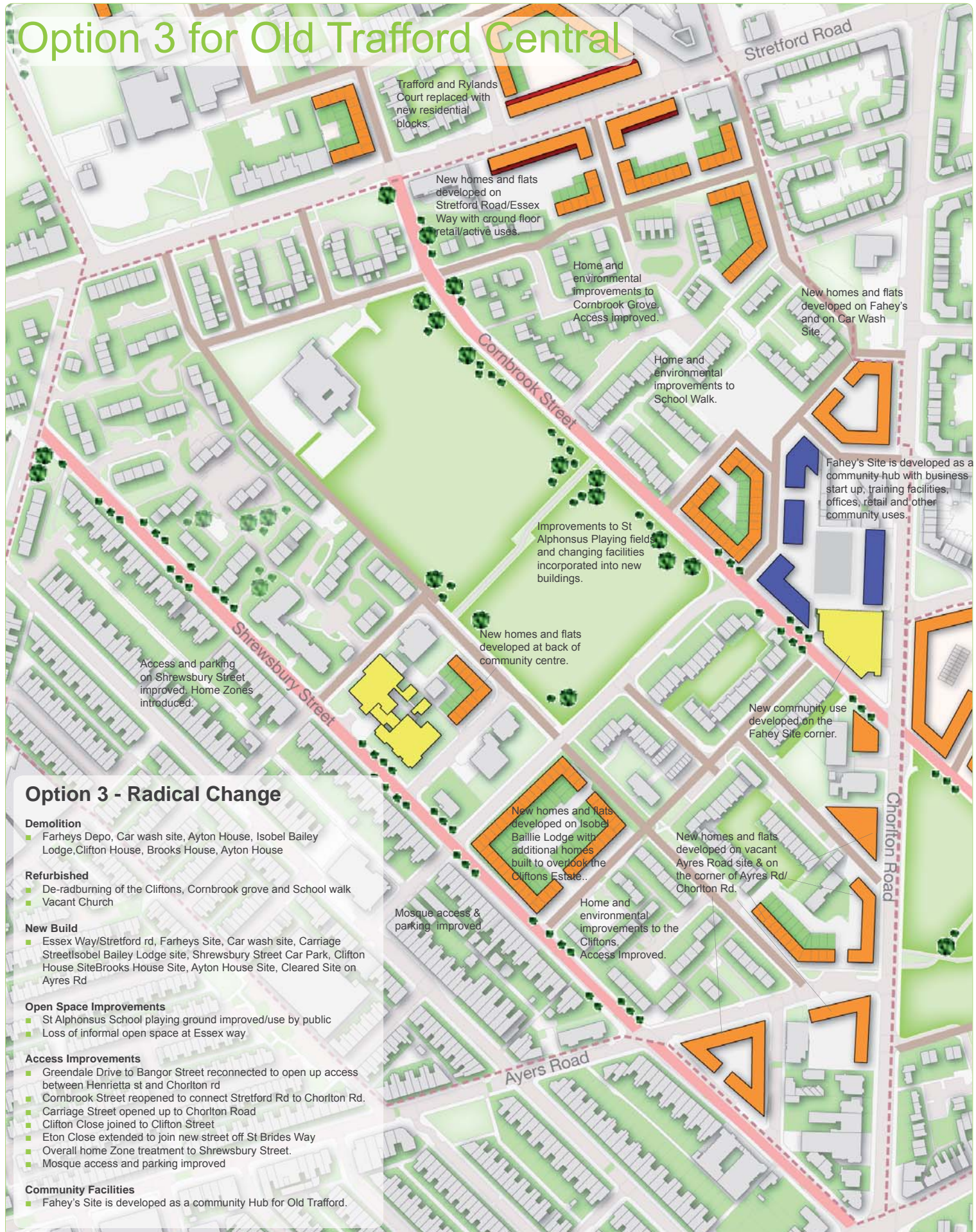


# Old Trafford Central

## OLD TRAFFORD MASTERPLAN



### Option 3 for Old Trafford Central



#### Option 3 - Radical Change

##### Demolition

- Farheys Depo, Car wash site, Ayton House, Isobel Bailey Lodge, Clifton House, Brooks House, Ayton House

##### Refurbished

- De-radburning of the Cliftons, Cornbrook grove and School walk
- Vacant Church

##### New Build

- Essex Way/Stretford rd, Farheys Site, Car wash site, Carriage Street/Isobel Bailey Lodge site, Shrewsbury Street Car Park, Clifton House Site/Brooks House Site, Ayton House Site, Cleared Site on Ayres Rd

##### Open Space Improvements

- St Alphonsus School playing ground improved/use by public
- Loss of informal open space at Essex way

##### Access Improvements

- Greendale Drive to Bangor Street reconnected to open up access between Henrietta st and Chorlton rd
- Cornbrook Street reopened to connect Stretford Rd to Chorlton Rd.
- Carriage Street opened up to Chorlton Road
- Clifton Close joined to Clifton Street
- Eton Close extended to join new street off St Brides Way
- Overall home Zone treatment to Shrewsbury Street.
- Mosque access and parking improved

##### Community Facilities

- Fahey's Site is developed as a community Hub for Old Trafford.



# Vision into Reality

## OLD TRAFFORD MASTERPLAN



## What happens next?

**Please fill out a questionnaire and tell us your views on these options. Use the post-it note pads to let us have your comments.**

The options for future improvements in Old Trafford on the boards are based on previous consultation with the community, council, stakeholders and emerging ideas which came out of the Round Table Workshop and the Design Charettes with local residents. **They have no basis in planning policy at present.**

The next stage of the masterplan is to:

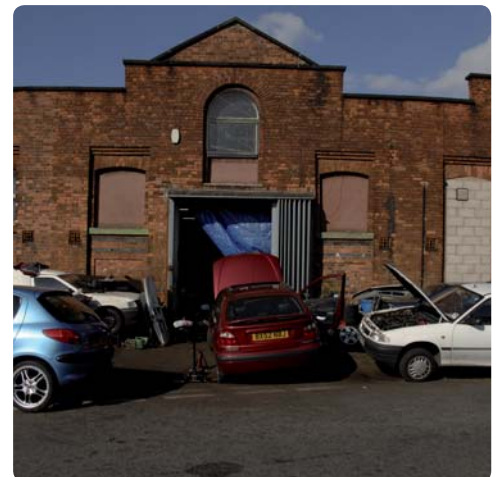
- Take account of the comments and feedback from the consultation.
- Produce an options appraisal report which will recommend a final Masterplan. The options appraisal report will take into account financial viability, market demand, regeneration potential and community and stakeholder consultation.
- There will be an exhibition of the draft final masterplan later in the year, which you will be notified of in advance.
- Every resident will receive a summary of the consultation and the preferred option.

The masterplan be used as a basis to bid for resources, and as a framework for future public and private sector investment in the area. The Strategy will inform the emerging Local Planning Framework to guide future development in Old Trafford.

## How can I keep informed?

You can keep informed by:

- Attending consultation events
- At the Shrewsbury Community Centre and Library
- Via the Internet at [www.urbed.com](http://www.urbed.com) & [Trafford Housing Trust.co.uk](http://TraffordHousingTrust.co.uk)
- Every resident and Business in the Study area will receive an update in November titled 'The Future Plan, Old Trafford' with a summary of consultation results and the preferred masterplan option and information on timescales for change.
- If you would like to talk to someone about the masterplan and options please contact Debbie at URBED on 0161 200 5500.
- Alternativley you can email [helene@uebed.com](mailto:helene@uebed.com).
- For information on housing please contact your local housing office.





# My Neighbourhood

## OLD TRAFFORD MASTERPLAN



### Comments & Feedback

Please fill out a questionnaire and tell us your views on these options.  
Use the post-it note pads to write any comments and stick them here.

Do you have a photograph you would like to share?  
Would you like to contribute a poem about Old Trafford?  
Would you like to draw a picture of your Neighbourhood?

Lemn Sissay has kindly contributed a poem about Ayres Road. He is a former Old Trafford Resident and world renowned poet and is proud of the place where he grew up.

Please use the paper and pens provided to contribute to this exhibition.  
There will be a prize for the best picture and poem.

#### *Ayres Road - Lemn Sissay*

*An old Jamaican man takes out his handkerchief and sweeps the slips slide from his shiny head  
He studies the mango from the cardboard shop box  
Reggae booms from a low rider passing  
Slow and low  
Tinted windows and fat engines sounds slide through the melting tarmac  
An old Beijing lady bow legged and sturdy as a clutch of roots carries her shopping home  
And forgets how hers had been dug  
A young nappy herd girl wearing all yellow and orange  
Empties steaming burned rice into the hot dry dustbin the scowl oil painted into her perfect head  
A corner is clutched by a knuckle of black folks  
Dressed in black by the church on Alphonso Street  
They found sweetened air with white memorials doves  
Nobody cries or wise  
Simple size in indiscriminate shaking of heads ruffle the air that sits respectfully around them  
And the girls with the gold teeth stand on one hip outside the hairdresser as the postman slips  
Letters into the chick like open mouth of the hungry homes  
And an Asian girl in slow potent step  
Walks with the neck of a swan and the eyes of a cool crocodile  
Her sari makes her seen dressed in a splash of water*

*Man, life is beautiful  
And my people are beautiful  
And I thank god that I am them  
And they are me*