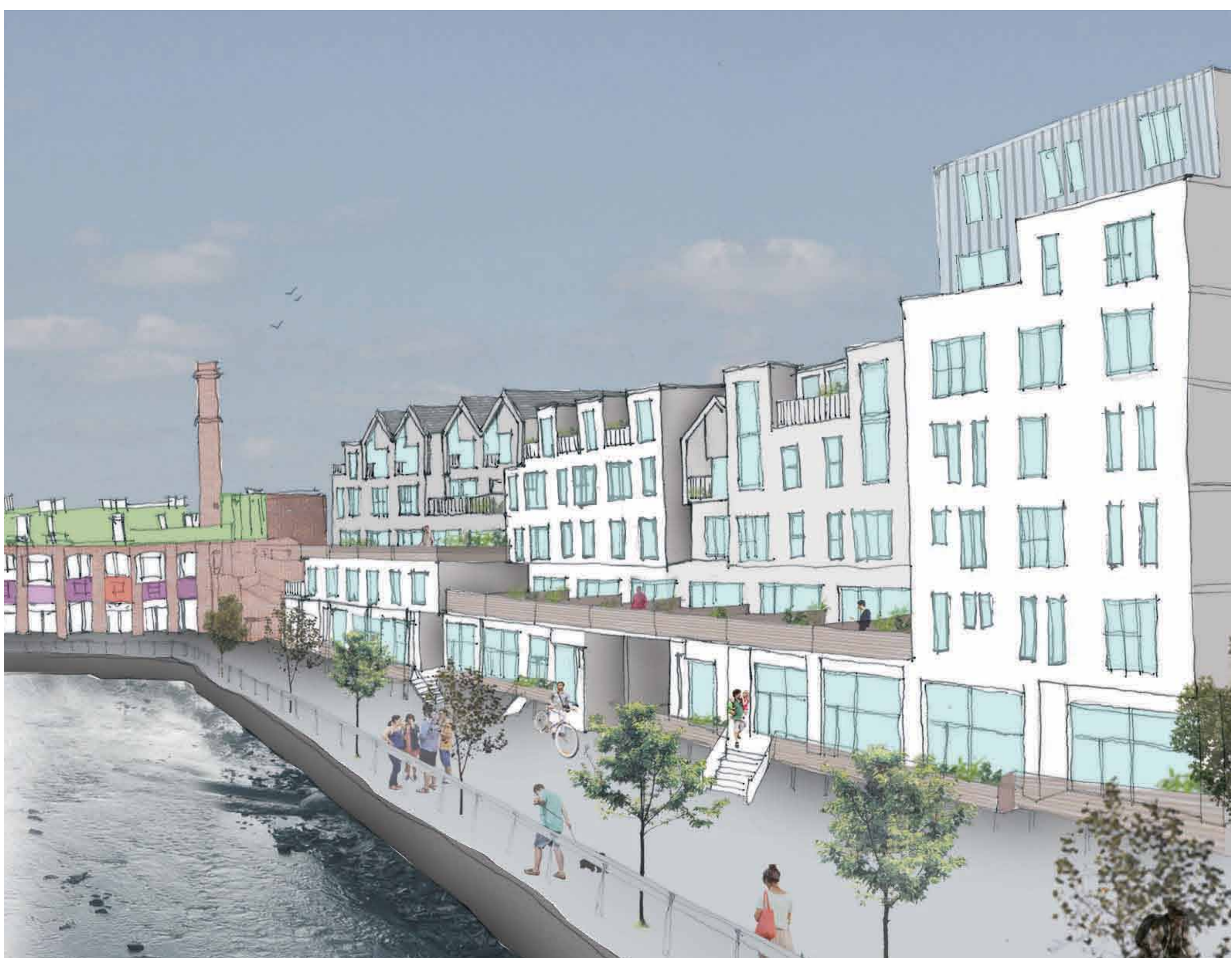


LOWER STEENBERG'S YARD



View from Ouse Street

View from Ouseburn



xsite architecture

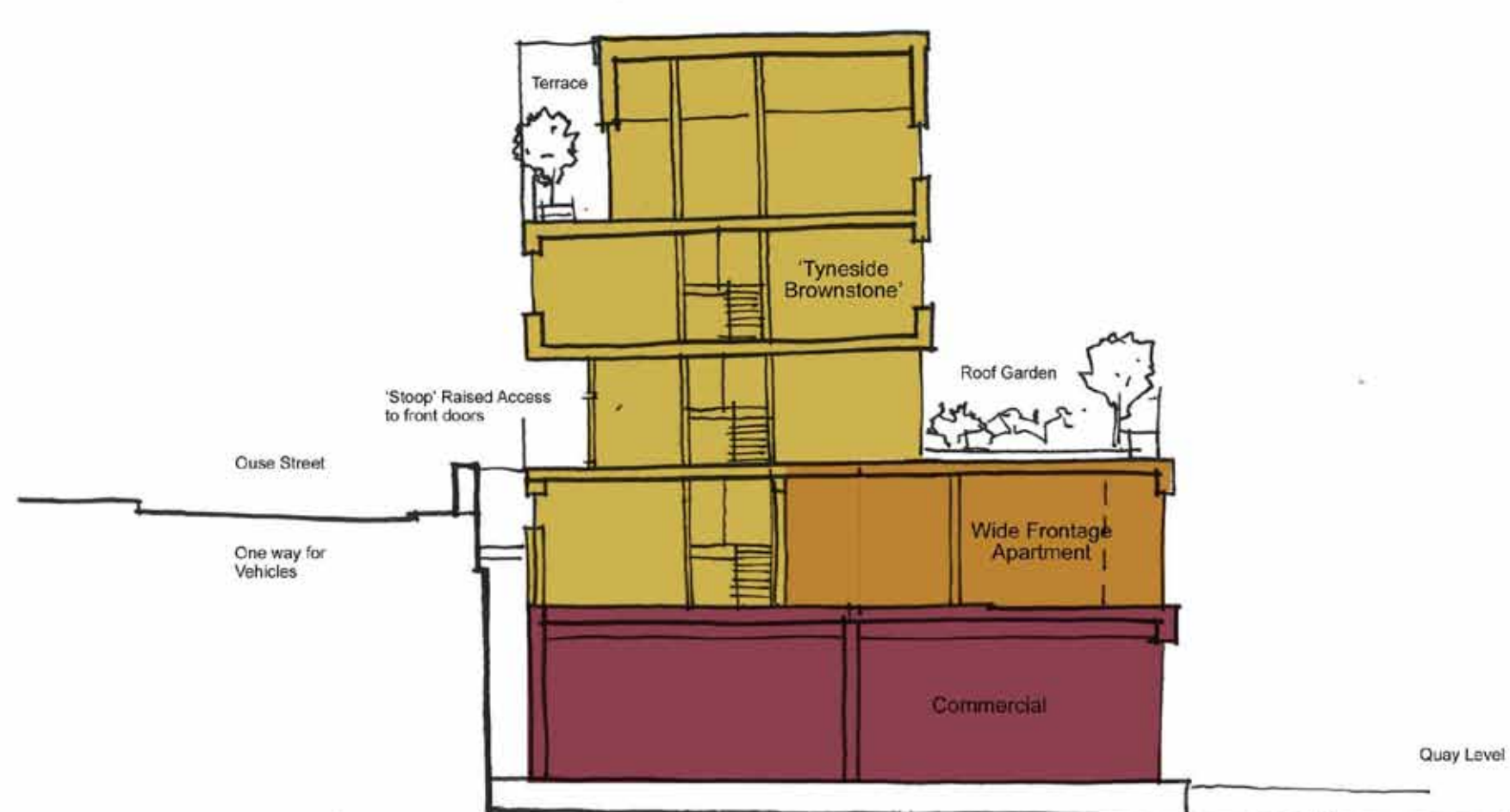
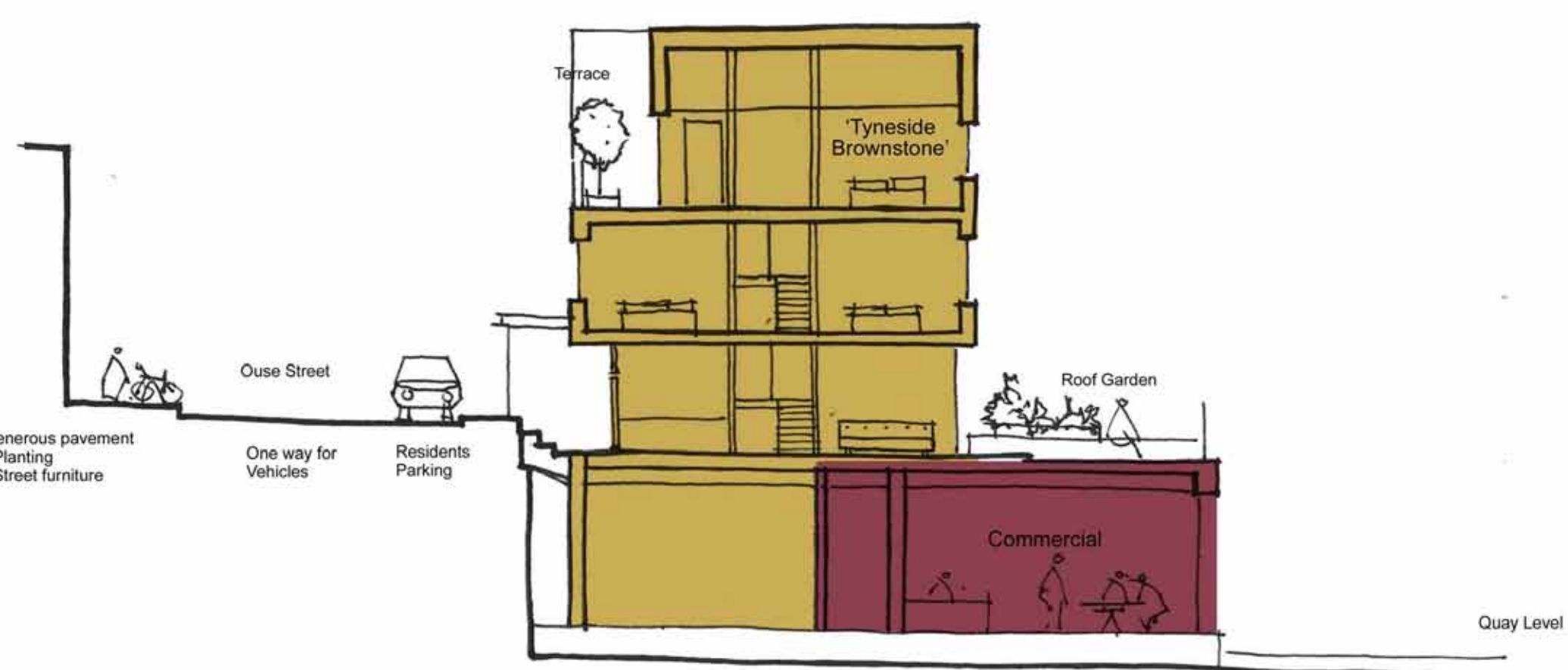
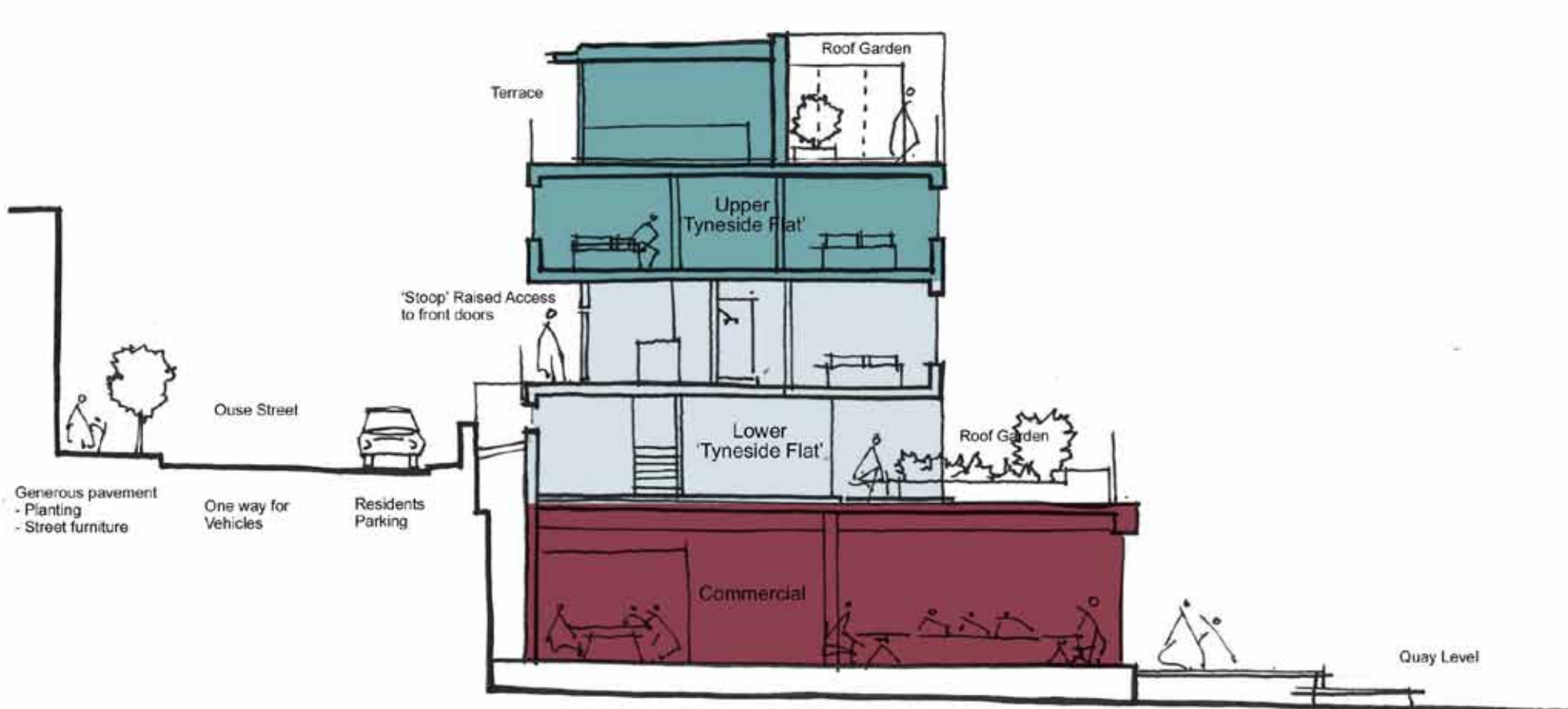
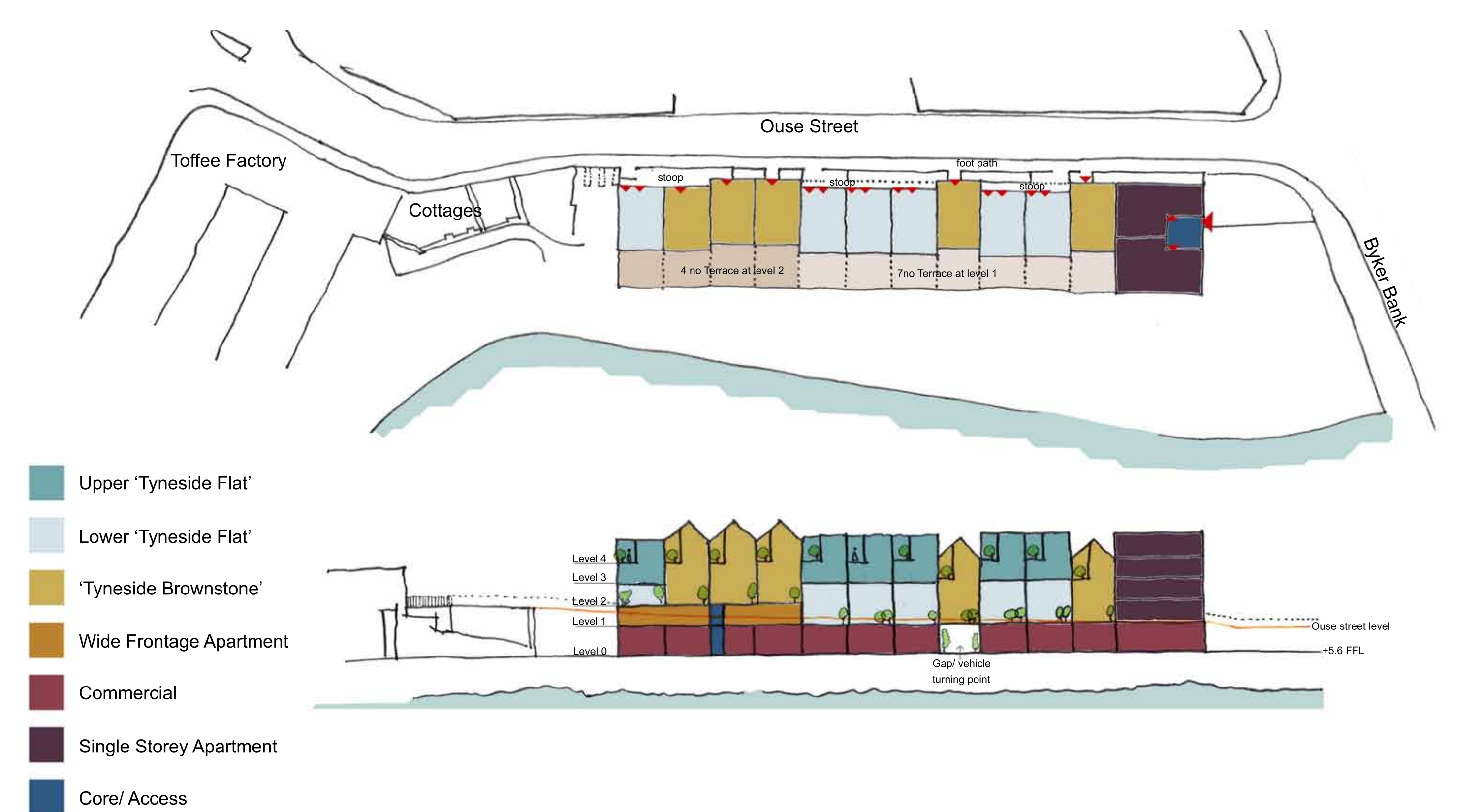
Lower Steenberg's Yard will provide residential accommodation and small commercial units as an extension to the offer of the Toffee Factory.

The streetscape along Ouse Street will be unified by the careful use of materials while creating plenty of individuality at each entrance. The river facing elevation will be varied and contribute to the colourful and creative character of the Valley.

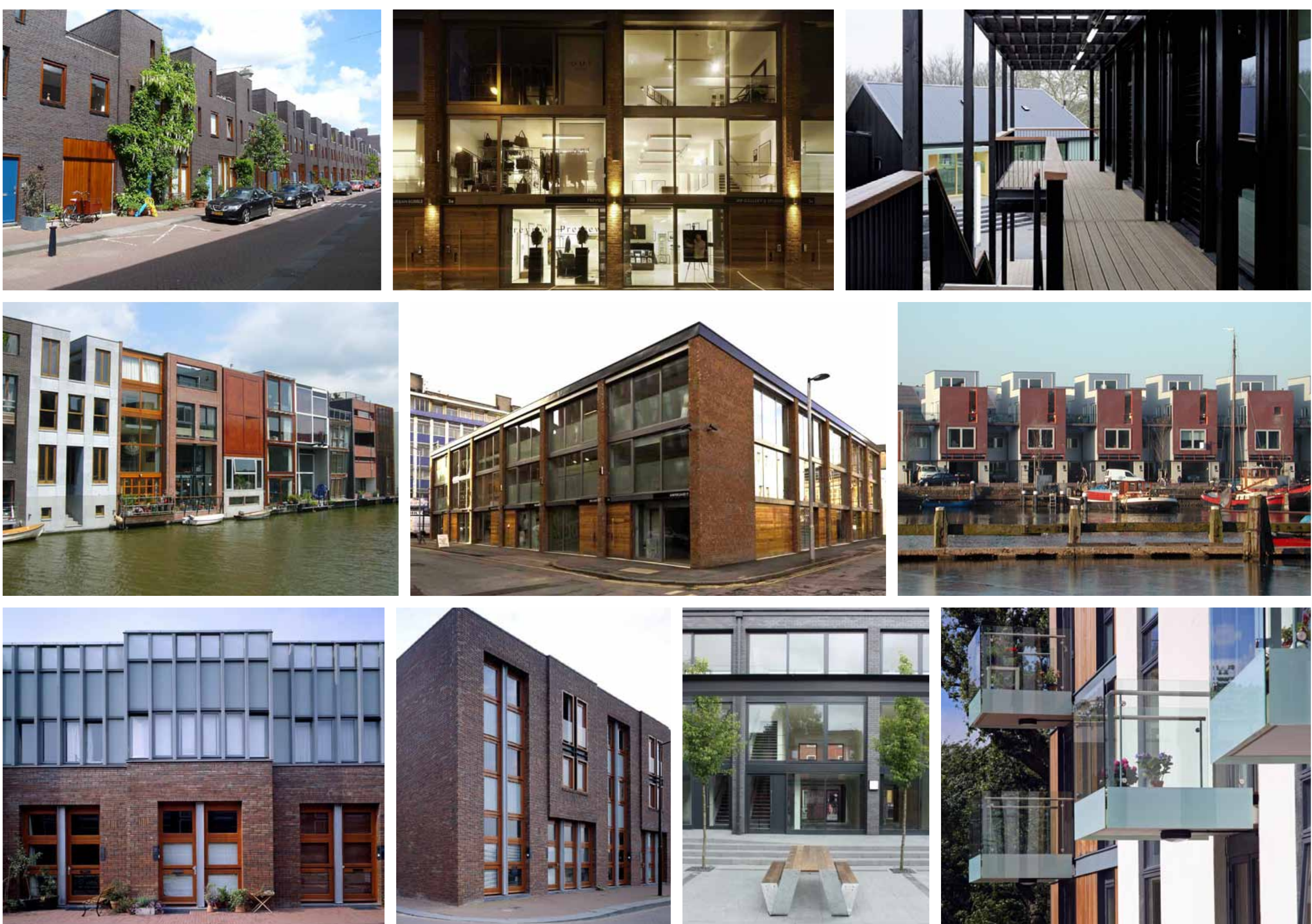
There will be 13 commercial units at Quayside level with their entrance and view towards the river.

All 30 dwellings will be accessed from Ouse Street with terraces and elevated views over the river and use terraces and balconies as outdoor and garden space. Most terraces will have a view of the river and balconies will allow bedrooms to benefit from outdoor spaces.

It is envisaged that Ouse Street will become one way to vehicular traffic allowing parallel road side parking. Further car parking and cycle parking would be at Quayside level.



WHAT COULD LOWER STEENBERG'S YARD FEEL LIKE?



Feedback Board

Feedback is important to us, so please write your comments on a post-it and stick it on the space beneath. We will be launching an online forum to gather comments on the scheme in around a month. Specifically we would like to know your thoughts on the following areas:

- **Changes to the scheme to date**
- **Proposed uses and designs**
- **Anything else you think is important or missing**

