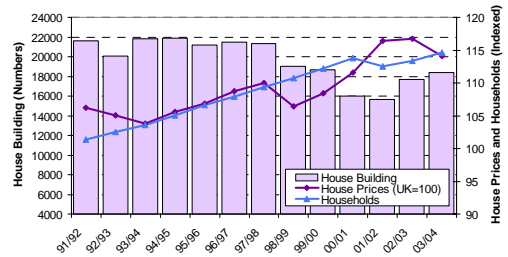


Cambridge 2050

Peter Hall
Quality Charter Symposium
Cambridge
7 July 2006

More Housing Needed!



Key Constraints

- Green Belt
- Floodplain
- But – still major possibilities:
- S of Cambridge:
- Duxford area
- N of Cambridge:
- Busway/St Ives/Huntingdon



The Economy: Geography of High-Tech

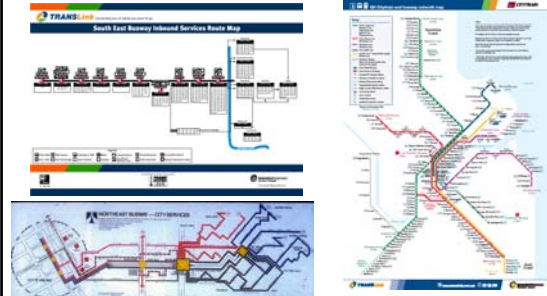
- Especially Cambridge City
- But widely scattered around
- *Both S and N*

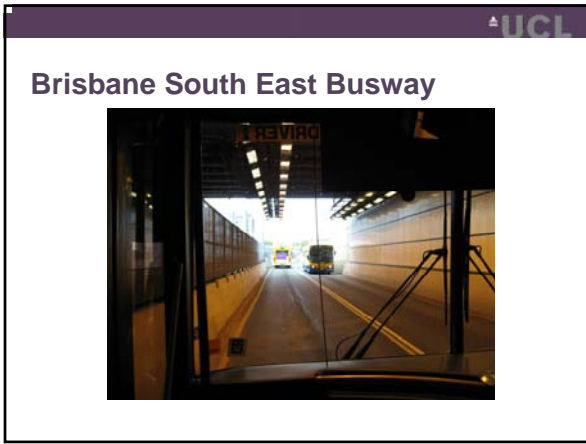


Busway: Key Opportunity

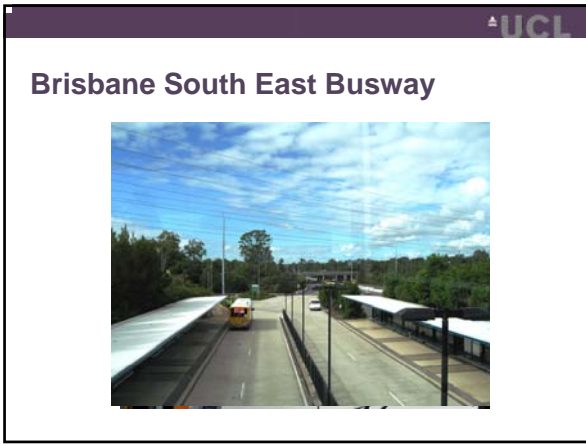


Bus Rapid Transit (BRT): Adelaide, Brisbane





Brisbane South East Busway



Brisbane South East Busway

Busway: Key Opportunity

- *Beads on a string:*
- Northstowe
- S of R Ouse: St Ives/
- Godmanchester
- N of R Ouse: NE of Huntingdon
- Extend N of Huntingdon?
- RAF Wyton
- Alconbury

Possible Growth Locations

	Dwelling Numbers/ Size	Type	Flood Risk	Green Belt	Overall Potential
NORTH OF CAMBRIDGE: Cambridge Airport (Teversham)	15000	Urban Extension	Low	Yes	Medium Depends on relocation of some existing airport facilities and termination of other activities; unlikely to be available in the short term.
Waterbeach	10000	Urban Extension	Medium	Yes	Medium Good rail transport and access to Cambridge but Green Belt development and road capacity issues.
Waterbeach Barracks	6000-10000, 294ha	New Settlement	Medium	No	High Good rail transport and access to Cambridge, and brownfield site.
Northstowe North	8000-10000	New Settlement	Medium/ High	No	Low flood risk a major issue
Northstowe	8000	New Settlement	Low	No	High Guided Busway, policy acceptance of proposal eg Structure Plan.
RAF Wyton	10000, 429ha	New Settlement	Low	No	Low Isolated site in open countryside with poor road connections. Likely to be a location for relocated maintenance facilities from Cambridge airport.
SOUTH OF CAMBRIDGE: Duxford	6000, 468ha	New Settlement	Low/ Medium	No	High No transport or green belt issues and in area of high economic demand.
Six Mile Bottom	14000-21000, 882ha	New Settlement	Low	No	Medium Green Belt issues, limited commuting potential to London.

Possible Growth Locations

Key

- Green Belt
- Extent of flood risk
- Mainline railways
- Guided busway
- 'A' roads